



Vivian

TX-TXS-190262

Approximate Acres: 12,021

Air Operations Map

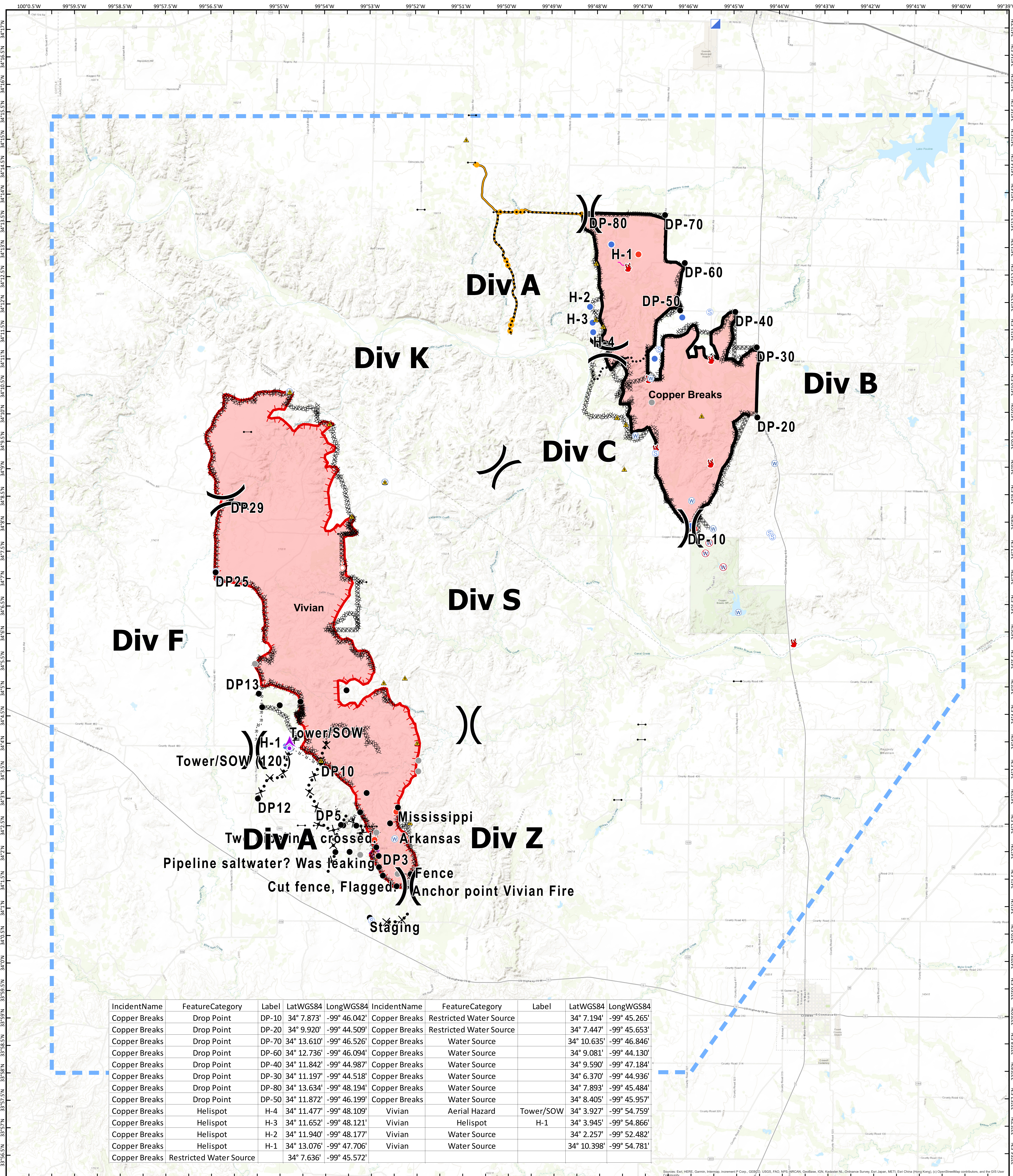
Copper Breaks

TX-TXS-190226

Approximate Acres: 7,206



8/25/2019



Tower/SOW (H-1)
 Tower/SOW (120)
 DP10
 DP12
 DP5
 DP3
 Mississippi
 Arkansas
 Pipeline saltwater? Was leaking
 Cut fence, Flagged
 Fence
 Anchor point Vivian Fire
 Staging

IncidentName	FeatureCategory	Label	LatWGS84	LongWGS84	IncidentName	FeatureCategory	Label	LatWGS84	LongWGS84
Copper Breaks	Drop Point	DP-10	34° 7.873'	-99° 46.042'	Copper Breaks	Restricted Water Source		34° 7.194'	-99° 45.265'
Copper Breaks	Drop Point	DP-20	34° 9.920'	-99° 44.509'	Copper Breaks	Restricted Water Source		34° 7.447'	-99° 45.653'
Copper Breaks	Drop Point	DP-70	34° 13.610'	-99° 46.526'	Copper Breaks	Water Source		34° 10.635'	-99° 46.846'
Copper Breaks	Drop Point	DP-60	34° 12.736'	-99° 46.094'	Copper Breaks	Water Source		34° 9.081'	-99° 44.130'
Copper Breaks	Drop Point	DP-40	34° 11.842'	-99° 44.987'	Copper Breaks	Water Source		34° 9.590'	-99° 47.184'
Copper Breaks	Drop Point	DP-30	34° 11.197'	-99° 44.518'	Copper Breaks	Water Source		34° 6.370'	-99° 44.936'
Copper Breaks	Drop Point	DP-80	34° 13.634'	-99° 48.194'	Copper Breaks	Water Source		34° 7.893'	-99° 45.484'
Copper Breaks	Drop Point	DP-50	34° 11.872'	-99° 46.199'	Copper Breaks	Water Source		34° 8.405'	-99° 45.957'
Copper Breaks	Helispot	H-4	34° 11.477'	-99° 48.109'	Vivian	Aerial Hazard	Tower/SOW	34° 3.927'	-99° 54.759'
Copper Breaks	Helispot	H-3	34° 11.652'	-99° 48.121'	Vivian	Helispot	H-1	34° 3.945'	-99° 54.866'
Copper Breaks	Helispot	H-2	34° 11.940'	-99° 48.177'	Vivian	Water Source		34° 2.257'	-99° 52.482'
Copper Breaks	Helispot	H-1	34° 13.076'	-99° 47.706'	Vivian	Water Source		34° 10.398'	-99° 54.781'
Copper Breaks	Restricted Water Source		34° 7.636'	-99° 45.572'					

Branch Break
 Division Break

- Aerial Hazard
- Helispot
- Spot Fire
- Temporary Flight Restriction
- Drop Point
- Hot Spot
- Staging Area
- Uncontrolled Fire Edge
- Fire Location
- Incident Command Post
- Water Source
- Completed Line
- Proposed Dozer Line
- Restricted Water Source
- Repeater
- Completed Dozer Line
- Aerial Hazard
- Other
- Management Action Point
- Safety Zone
- R - R - Road as Completed Line
- Other
- Unknown
- Gate



Information shown is based on the best available data at the time of map production.
 Perimeter from satellite interpretation and fixed wing flight.
 Latest intel: 20190823 @ 1750
 20190824 @ 2128
 Map Datum: NAD83 Feet
 Author: SA Red Team
 0 0.5 1 2 Miles