



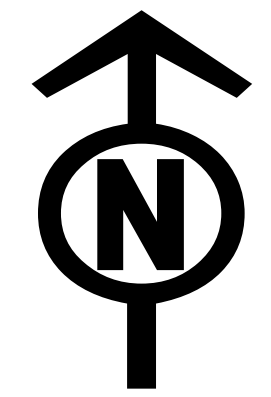
Vivian
TX-TXS-190262

Approximate Acres: 12,021

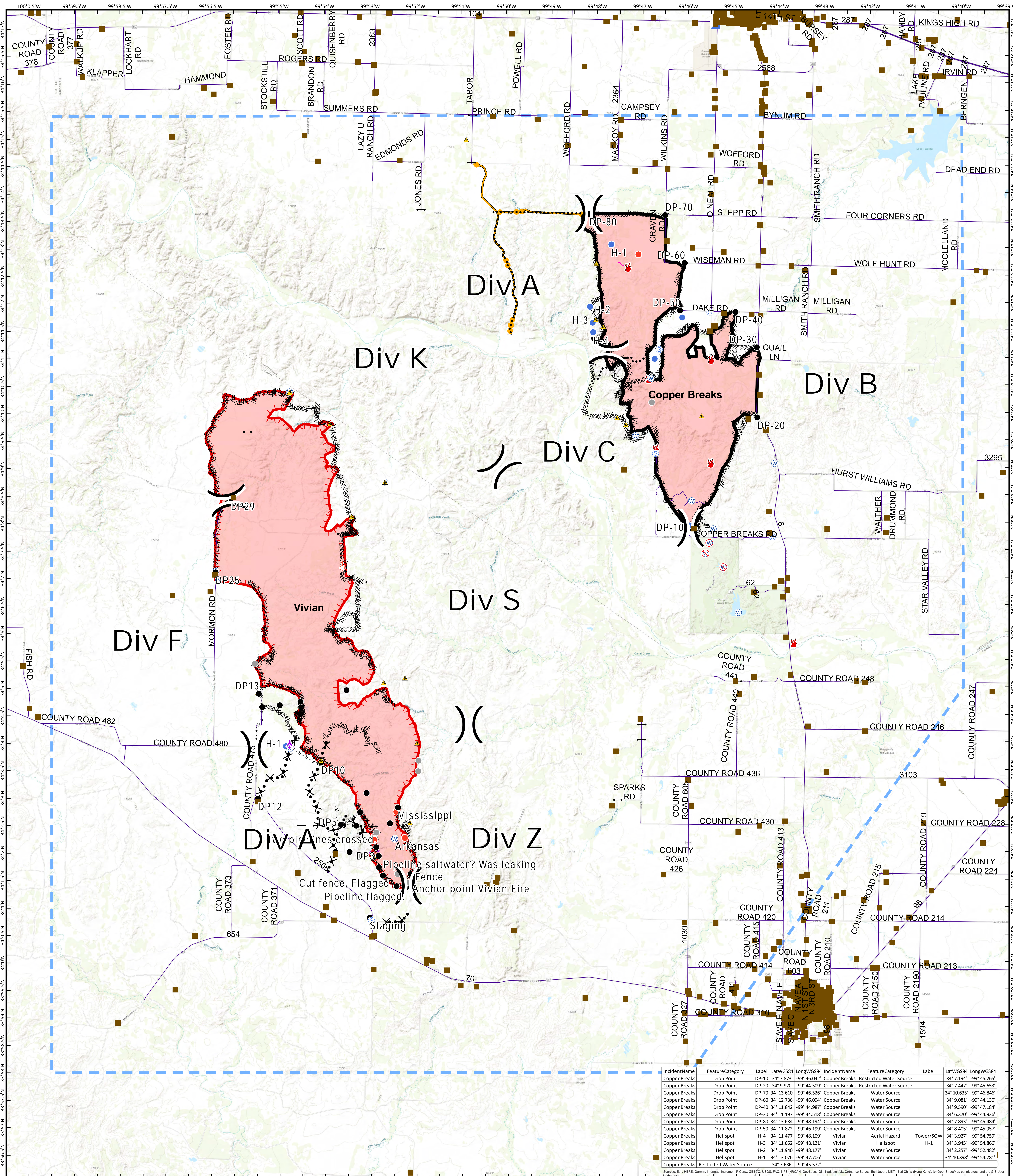
Air Operations Map

Copper Breaks
TX-TXS-190226

Approximate Acres: 7,206



8/25/2019



Notes:
Pipeline saltwater? Was leaking
Cut fence. Flagged
Pipeline flagged
Anchor point Vivian Fire
Staging

IncidentName	FeatureCategory	Label	LatWGS84	LongWGS84	IncidentName	FeatureCategory	Label	LatWGS84	LongWGS84
Copper Breaks	Drop Point	DP-10	34° 7.873'	-99° 46.042'	Copper Breaks	Restricted Water Source		34° 7.194'	-99° 45.265'
Copper Breaks	Drop Point	DP-20	34° 9.920'	-99° 44.509'	Copper Breaks	Restricted Water Source		34° 7.447'	-99° 45.653'
Copper Breaks	Drop Point	DP-70	34° 13.610'	-99° 46.526'	Copper Breaks	Water Source		34° 10.635'	-99° 46.846'
Copper Breaks	Drop Point	DP-60	34° 12.736'	-99° 46.094'	Copper Breaks	Water Source		34° 9.081'	-99° 44.130'
Copper Breaks	Drop Point	DP-40	34° 11.842'	-99° 44.987'	Copper Breaks	Water Source		34° 9.500'	-99° 47.184'
Copper Breaks	Drop Point	DP-30	34° 11.197'	-99° 44.518'	Copper Breaks	Water Source		34° 6.370'	-99° 44.936'
Copper Breaks	Drop Point	DP-80	34° 13.634'	-99° 48.194'	Copper Breaks	Water Source		34° 7.893'	-99° 45.484'
Copper Breaks	Drop Point	DP-50	34° 11.872'	-99° 46.199'	Copper Breaks	Water Source		34° 8.405'	-99° 45.957'
Copper Breaks	Helispot	H-4	34° 11.477'	-99° 48.109'	Vivian	Aerial Hazard	Tower/SOW	34° 3.927'	-99° 54.759'
Copper Breaks	Helispot	H-3	34° 11.652'	-99° 48.121'	Vivian	Helispot	H-1	34° 3.945'	-99° 54.866'
Copper Breaks	Helispot	H-2	34° 11.840'	-99° 48.177'	Vivian	Water Source		34° 2.257'	-99° 52.482'
Copper Breaks	Helispot	H-1	34° 13.076'	-99° 47.761'	Vivian	Water Source		34° 10.398'	-99° 54.781'
Copper Breaks	Restricted Water Source		34° 7.636'	-99° 45.572'					

Legend:

- Branch Break
- Division Break
- Aerial Hazard
- Drop Point
- Fire Location
- Fire Origin
- Staging Area
- Gate
- Hot Spot
- Repeater
- Safety Zone
- Spot Fire
- Water Source
- Restricted Water Source
- Other
- Temporary Flight Restriction
- Uncontrolled Fire Edge
- Completed Line
- Completed Dozer Line
- R - R - Road as Completed Line
- Planned Secondary Line
- Aerial Hazard
- Management Action Point
- Other
- Unknown



Information shown is based on the best available data at the time of map production.
Perimeter from satellite interpretation and fixed wing flight.
Latest intel: 20190823 @ 1750

0 0.5 1 2 Miles

20190824 @ 2109
Map Datum: NAD83 Feet
Author: SA Red Team