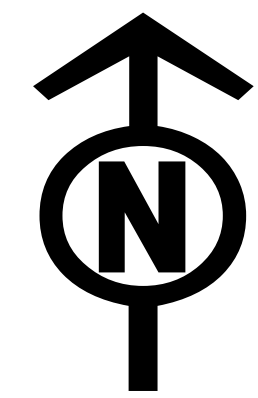




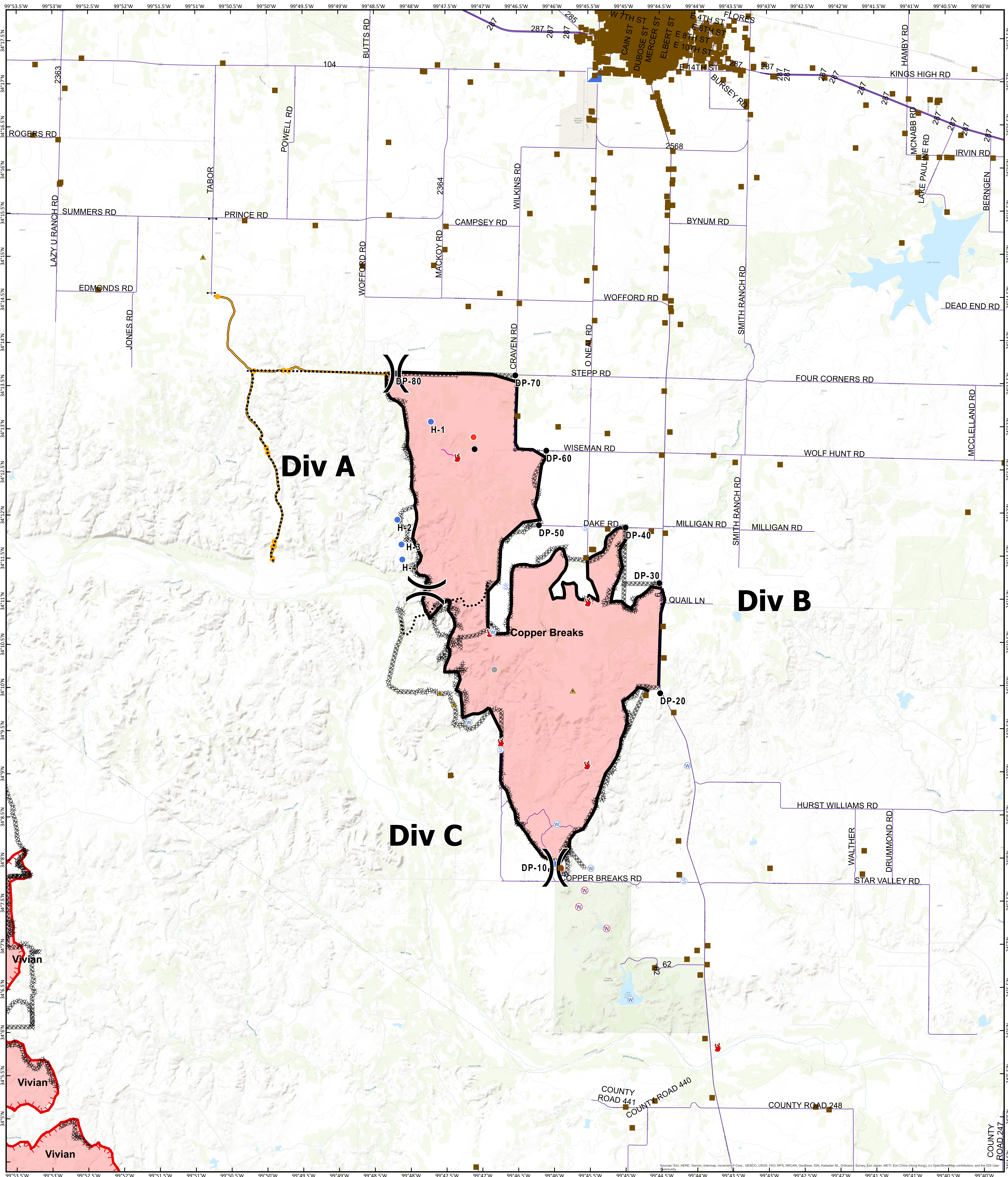
# Operations Map

# Copper Breaks TX-TXS-190226

Approximate Acreage: 7,206



8/25/2019



- Branch Break
- Structure Protection
- Drop Point
- Fire Location
- Fire Origin
- Gate
- Helispot
- Hot Spot
- Incident Command Post
- Safety Zone
- Staging Area
- Water Source
- Restricted Water Source
- Other
- Roadway
- Uncontrolled Fire Edge
- Completed Line
- Completed Dozer Line
- R-R Road as Completed Line
- Planned Secondary Line
- Management Action Point
- Other
- Unknown



Information shown is based on the best available data at the time of map production.

Perimeter from satellite interpretation and fixed wing flight.

Latest intel: 20190824 @ 1950

20190824 @ 2100  
Map Datum: NAD83 Feet  
Author: SA Red Team

