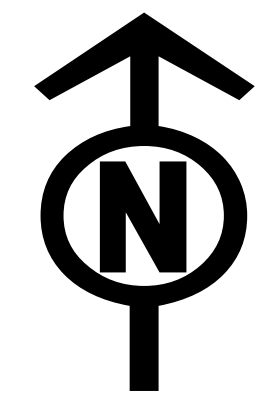




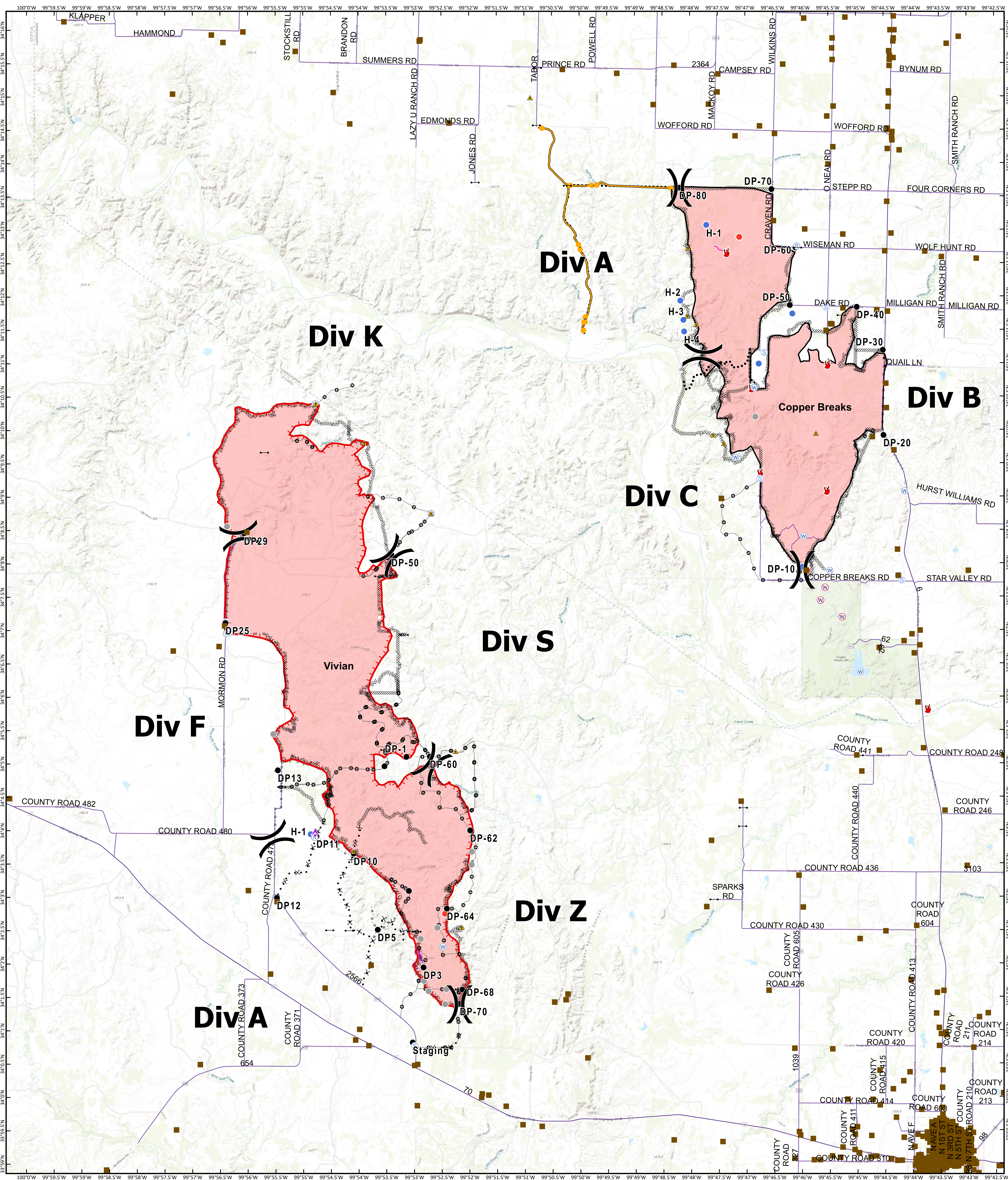
Vivian
TX-TXS-190262
Approximate Acres: 12,021

Briefing Map

Copper Breaks
TX-TXS-190226
Approximate Acres: 7,206



8/26/2019



- | | | | |
|---------------|-------------------------|--------------------------------|---------------------------------|
| Branch Break | Hot Spot | Roadway | Planned Secondary Line |
| Aerial Hazard | Repeater | Uncontrolled Fire Edge | Aerial Hazard |
| Drop Point | Safety Zone | Completed Line | (XXXX) Ridge/Geographic Feature |
| Fire Location | Spot Fire | Completed Dozer Line | Management Action Point |
| Fire Origin | Staging Area | R - R - Road as Completed Line | Other |
| Gate | Water Source | Proposed Dozer Line | Unknown |
| Helispot | Restricted Water Source | | |
| | Other | | |



Information shown is based on the best available data at the time of map production.
Perimeter from satellite interpretation and fixed wing flight.
Latest intel: 20190823 @ 1950

20190825 @ 2028
Map Datum: NAD83 Feet
Author: SA Red Team

0 0.5 1 2 Miles