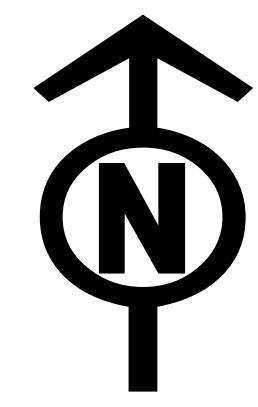




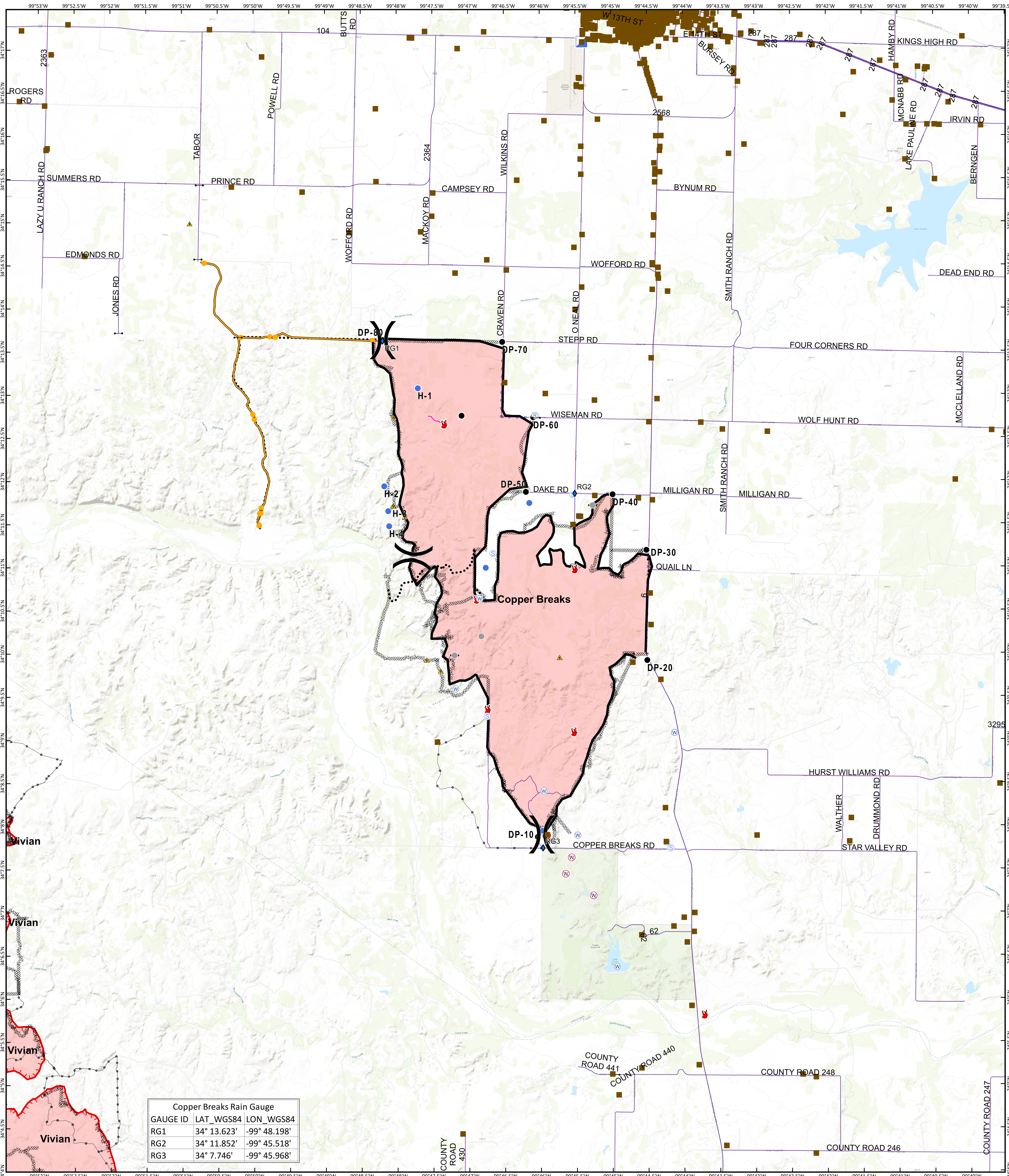
# Operations Map

# Copper Breaks TX-TXS-190226

Approximate Acreage: 7,206



8/27/2019



**Copper Breaks Rain Gauge**

GAUGE ID	LAT_WGS84	Lon_WGS84
RG1	34° 13.623'	-99° 48.198'
RG2	34° 11.852'	-99° 45.518'
RG3	34° 7.746'	-99° 45.968'

**Branch Break** (Symbol)

**Division Break** (Symbol)

Rain Gauge (Symbol)

Structure Protection (Symbol)

Drop Point (Symbol)

Fire Location (Symbol)

Fire Origin (Symbol)

Gate (Symbol)

Helispot (Symbol)

Incident Command Post (Symbol)

Repeater (Symbol)

Safety Zone (Symbol)

Staging Area (Symbol)

Water Source (Symbol)

Restricted Water Source (Symbol)

Other (Symbol)

Division Break (Symbol)

Roadway (Symbol)

Uncontrolled Fire Edge (Symbol)

Completed Line (Symbol)

Completed Dozer Line (Symbol)

R - R - R Road as Completed Line (Symbol)

Planned Secondary Line (Symbol)

Management Action Point (Symbol)

Other (Symbol)

Unknown (Symbol)

Information shown is based on the best available data at the time of map production.

Perimeter from satellite interpretation and fixed wing flight.

Latest intel: 20190825 @ 2000

20190826 @ 1949  
Map Datum: NAD83 Feet  
Author: SA Red Team

0 0.5 1 2 Miles