

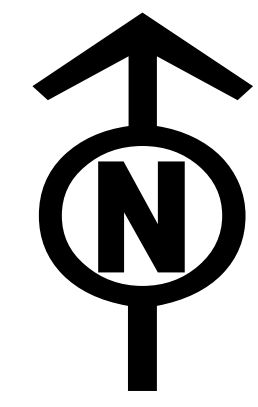


Operations Map

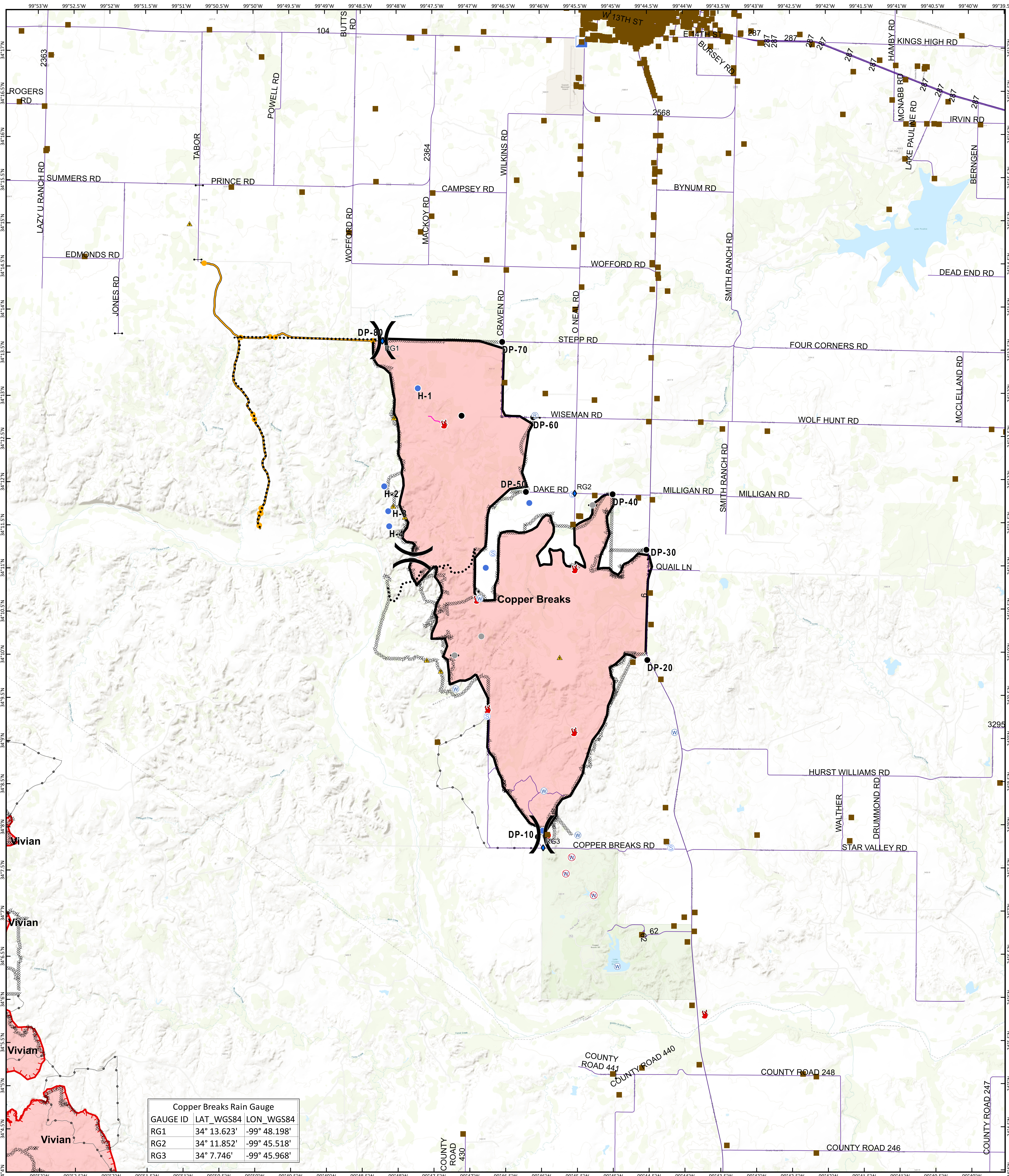
Copper Breaks

TX-TXS-190226

Approximate Acreage: 7,206



8/28/2019



Copper Breaks Rain Gauge

GAUGE ID	LAT_WGS84	Lon_WGS84
RG1	34° 13.623'	-99° 48.198'
RG2	34° 11.852'	-99° 45.518'
RG3	34° 7.746'	-99° 45.968'

- Branch Break
- Division Break
- Rain Gauge
- Structure Protection
- Drop Point
- Fire Location
- Fire Origin
- Cate
- Helispot
- Incident Command Post
- Repeater
- Safety Zone
- Staging Area
- Water Source
- Restricted Water Source
- Other
- Division Break
- Uncontrolled Fire Edge
- Completed Line
- Completed Dozer Line
- Road as Completed Line
- Planned Secondary Line
- Management Action Point
- Other
- Unknown



Information shown is based on the best available data at the time of map production.
Perimeter from satellite interpretation and fixed wing flight.
Latest intel: 20190827 @ 1945

20190827 @ 2052
Map Datum: NAD83 Feet
Author: SA Red Team

