



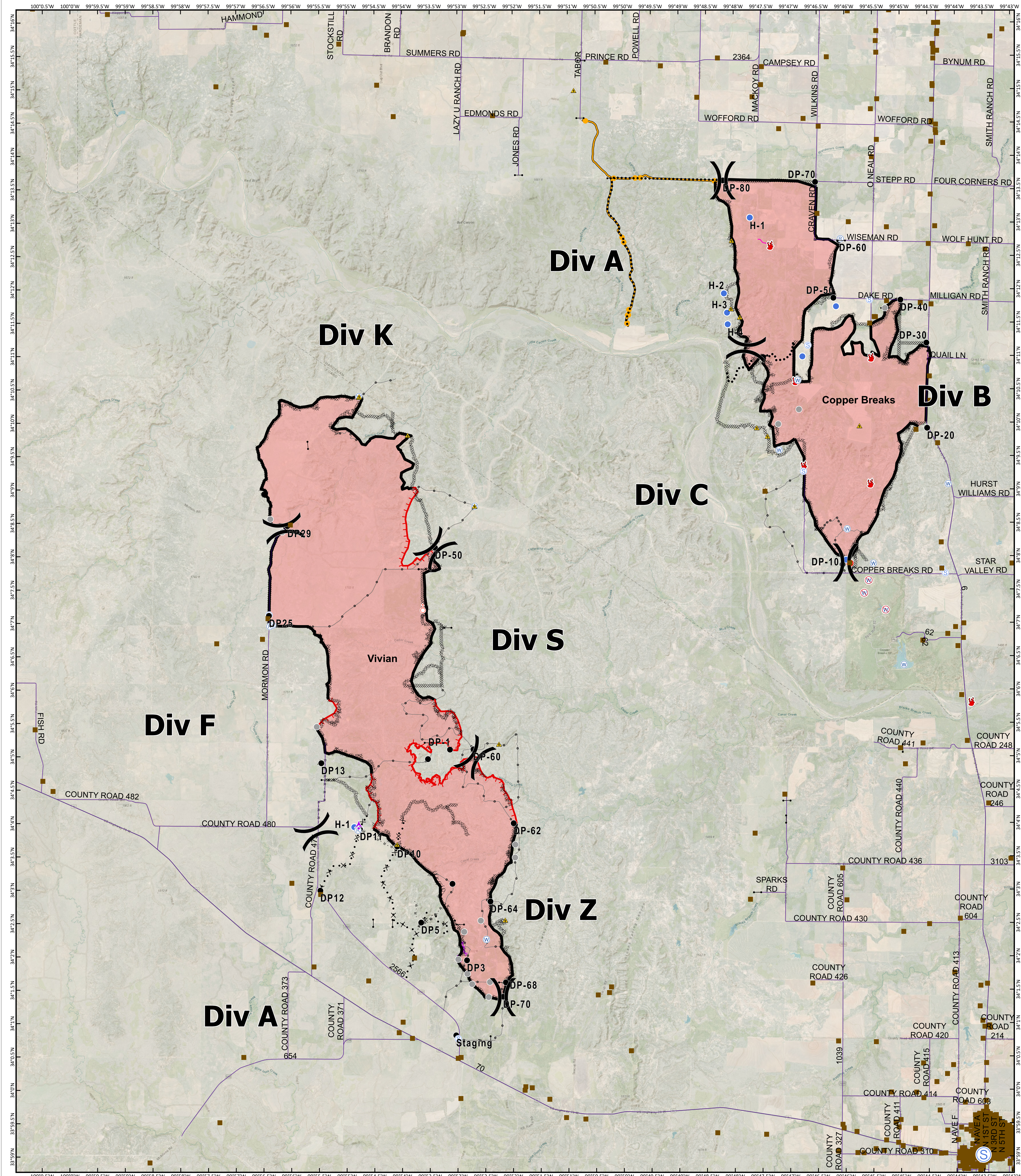
Vivian
TX-TXS-190262
Approximate Acres: 12,021

Briefing Map

Copper Breaks
TX-TXS-190226
Approximate Acres: 7,206



8/29/2019



[[Branch Break
) Division Break

- Structure Protection
- ▲ Aerial Hazard
- Drop Point
- 🔥 Fire Location
- 📍 Fire Origin
- ⚡ Gate
- Helispot
- Ⓜ Repeater
- ⚠ Safety Zone
- Ⓞ Spot Fire
- Ⓜ Staging Area
- 🌊 Water Source
- Ⓜ Restricted Water Source
- Other
- Roadway
- Uncontrolled Fire Edge
- Completed Line
- ⋯ Completed Dozer Line
- ⋯ Management Action Point
- ⋯ R - R - Road as Completed Line
- ⋯ Proposed Dozer Line
- ⋯ Planned Secondary Line
- ⋯ Aerial Hazard
- ⋯ Ridge/Geographic Feature
- ⋯ Management Action Point
- ⋯ Other
- ⋯ Unknown



Information shown is based on the best available data at the time of map production.
Perimeter from satellite interpretation and fixed wing flight.
Latest intel: 20190828 @ 1500

20190828 @ 1909
Map Datum: NAD83 Feet
Author: SA Red Team

0 0.5 1 2 Miles