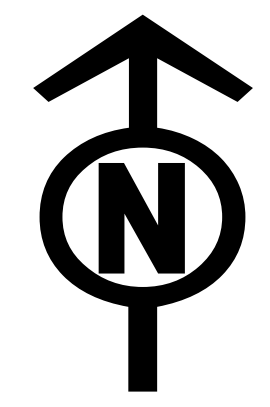




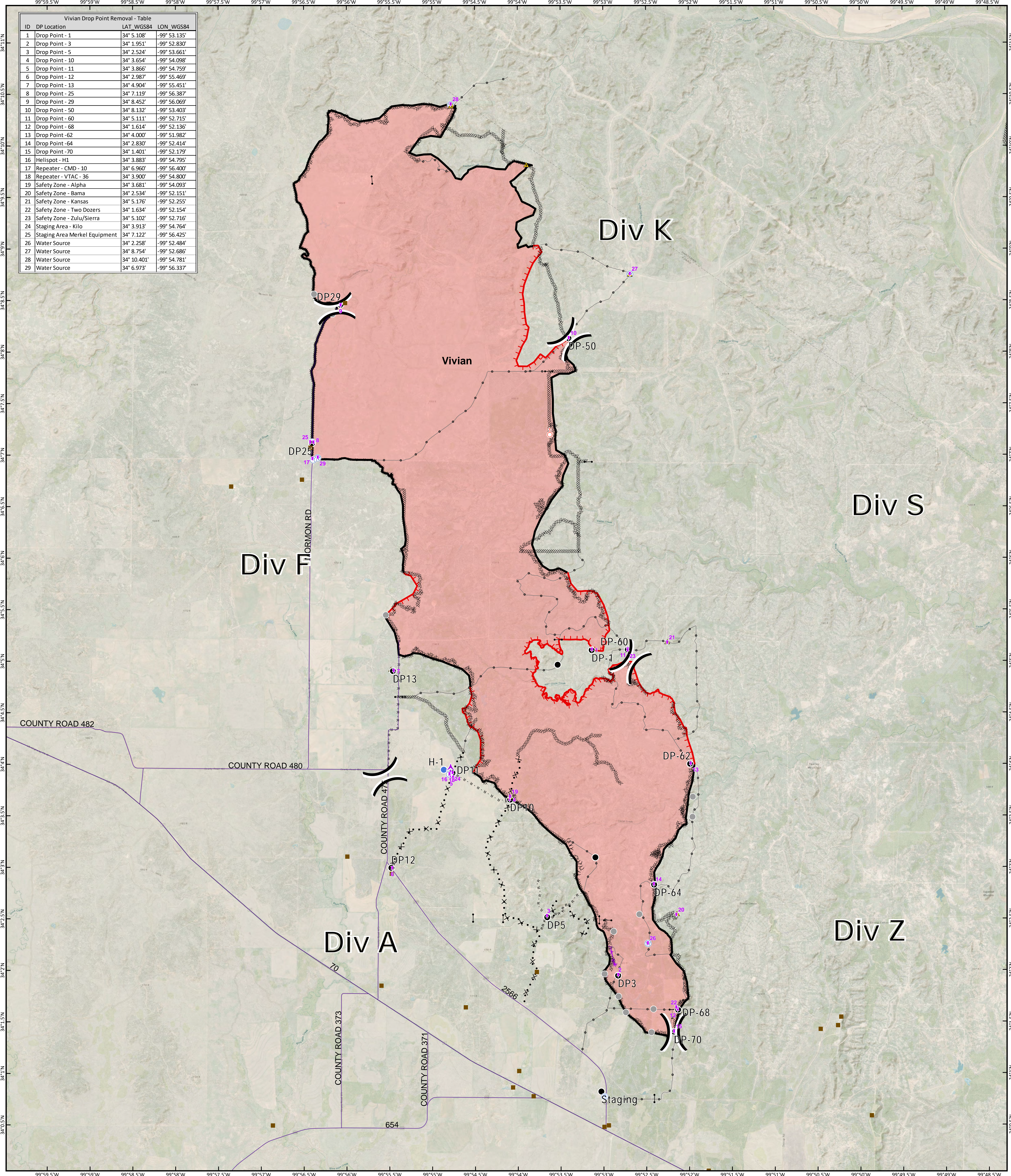
# Drop Point Sign Removal Map

**Vivian**  
**TX-TXS-190262**  
**Approximate Acreage: 12,021**



8/29/2019

ID	DP Location	LAT_WGS84	LON_WGS84
1	Drop Point - 1	34° 5.108'	-99° 53.135'
2	Drop Point - 3	34° 1.951'	-99° 52.830'
3	Drop Point - 5	34° 2.524'	-99° 53.661'
4	Drop Point - 10	34° 3.654'	-99° 54.098'
5	Drop Point - 11	34° 3.866'	-99° 54.759'
6	Drop Point - 12	34° 2.987'	-99° 55.469'
7	Drop Point - 13	34° 4.904'	-99° 55.451'
8	Drop Point - 25	34° 7.119'	-99° 56.387'
9	Drop Point - 29	34° 8.452'	-99° 56.069'
10	Drop Point - 50	34° 8.132'	-99° 53.403'
11	Drop Point - 60	34° 5.111'	-99° 52.715'
12	Drop Point - 68	34° 1.614'	-99° 52.136'
13	Drop Point - 62	34° 4.000'	-99° 51.982'
14	Drop Point - 64	34° 2.830'	-99° 52.414'
15	Drop Point - 70	34° 1.401'	-99° 52.179'
16	Helispot - H1	34° 3.883'	-99° 54.795'
17	Repeater - CMD - 10	34° 6.960'	-99° 56.400'
18	Repeater - VTAC - 36	34° 3.900'	-99° 54.800'
19	Safety Zone - Alpha	34° 3.681'	-99° 54.093'
20	Safety Zone - Bama	34° 2.534'	-99° 52.151'
21	Safety Zone - Kansas	34° 5.176'	-99° 52.255'
22	Safety Zone - Two Dozers	34° 1.634'	-99° 52.154'
23	Safety Zone - Zulu/Sierra	34° 5.102'	-99° 52.716'
24	Staging Area - Kilo	34° 3.913'	-99° 54.764'
25	Staging Area Merkel Equipment	34° 7.122'	-99° 56.425'
26	Water Source	34° 2.258'	-99° 52.484'
27	Water Source	34° 8.754'	-99° 52.686'
28	Water Source	34° 10.401'	-99° 54.781'
29	Water Source	34° 6.973'	-99° 56.337'



<ul style="list-style-type: none"> <li>[[ Branch Break</li> <li>) Division Break</li> </ul>	<ul style="list-style-type: none"> <li>Drop Point Signage</li> <li>Structure Protection</li> <li>Aerial Hazard</li> <li>Drop Point</li> <li>Gate</li> <li>Helispot</li> <li>Repeater</li> <li>Safety Zone</li> <li>Spot Fire</li> <li>Staging Area</li> <li>Water Source</li> <li>Other</li> <li>Roadway</li> <li>Uncontrolled Fire Edge</li> <li>Completed Line</li> <li>Completed Dozer Line</li> <li>Road as Completed Line</li> <li>Proposed Dozer Line</li> <li>Aerial Hazard</li> <li>Ridge/Geographic Feature</li> <li>Other</li> </ul>	<p>Information shown is based on the best available data at the time of map production.</p> <p>Perimeter from satellite interpretation and fixed wing flight.</p> <p>Latest intel: 20190827 @ 1945</p>	<p>20190828 @ 1707  Map Datum: NAD83 Feet  Author: SA Red Team</p> <p>0 0.375 0.75 1.5 Miles</p>
---	--	--	--