




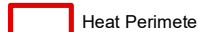

98°32'0"W 98°31'30"W 98°31'0"W 98°30'30"W 98°30'0"W 98°29'30"W

32°55'0"N
32°54'30"N
32°54'0"N
32°53'30"N


32°55'0"N
32°54'30"N
32°54'0"N
32°53'30"N


NATIONAL

INFRARED OPERATIONS

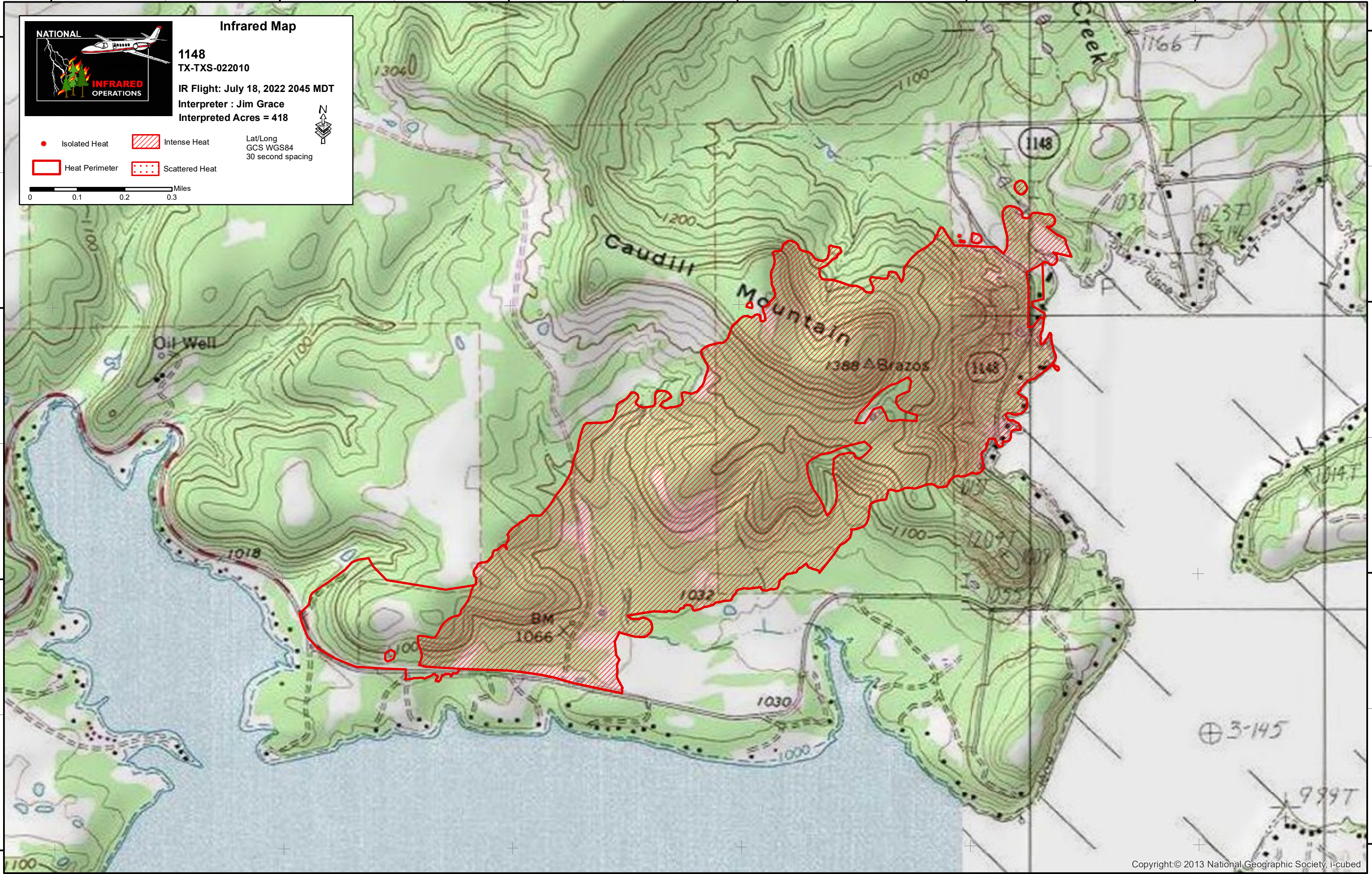
Infrared Map
1148
 TX-TXS-022010
 IR Flight: July 18, 2022 2045 MDT
 Interpreter : Jim Grace
 Interpreted Acres = 418

 Isolated Heat  Intense Heat
 Heat Perimeter  Scattered Heat

Lat/Long
 GCS WGS84
 30 second spacing

 Miles





98°32'0"W 98°31'30"W 98°31'0"W 98°30'30"W 98°30'0"W 98°29'30"W