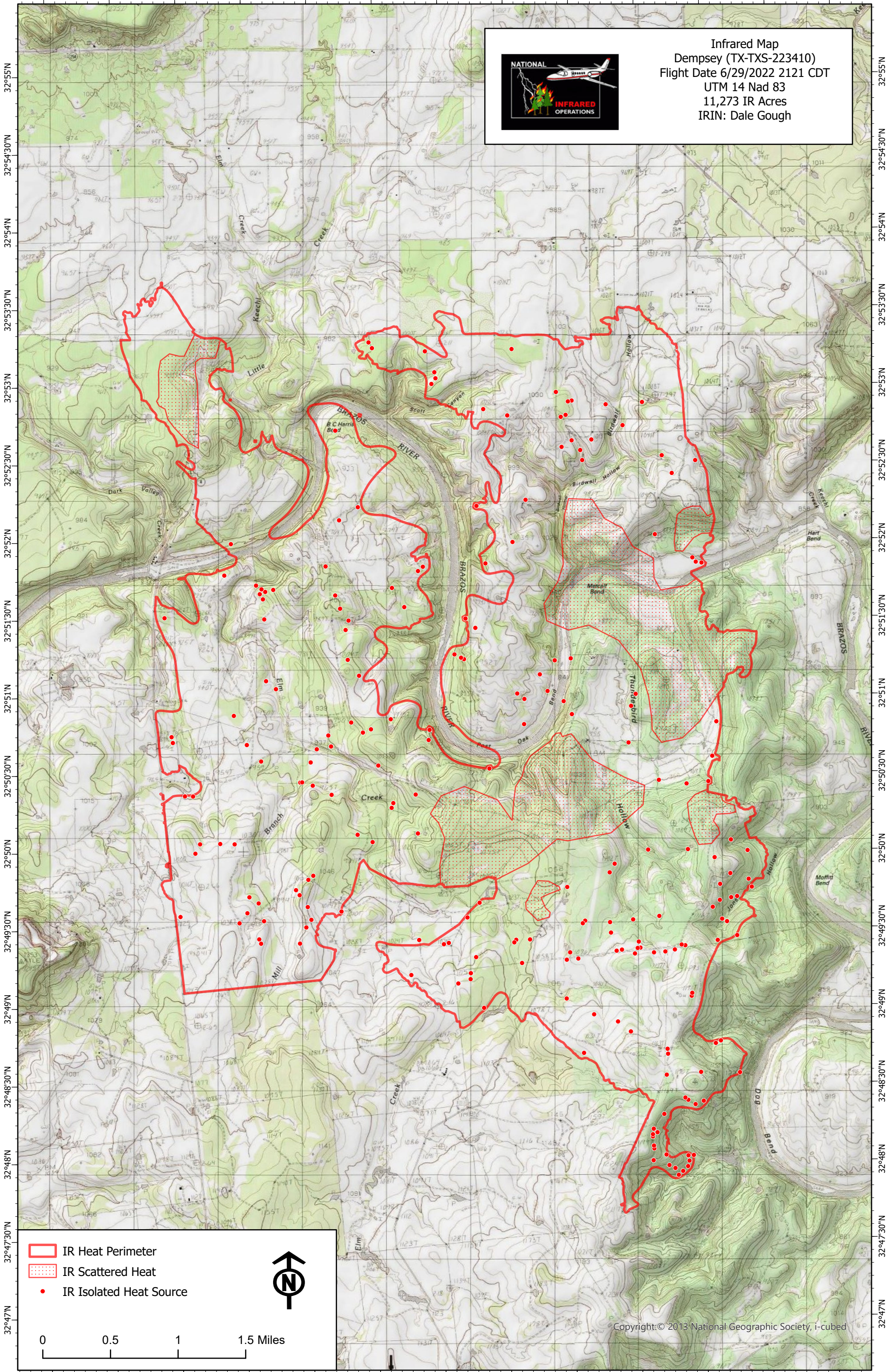







98°19'W 98°18'30"W 98°18'W 98°17'30"W 98°17'W 98°16'30"W 98°16'W 98°15'30"W 98°15'W 98°14'30"W 98°14'W 98°13'30"W 98°13'W

Infrared Map
 Dempsey (TX-TXS-223410)
 Flight Date 6/29/2022 2121 CDT
 UTM 14 Nad 83
 11,273 IR Acres
 IRIN: Dale Gough

-  IR Heat Perimeter
-  IR Scattered Heat
-  IR Isolated Heat Source



0 0.5 1 1.5 Miles

Copyright: © 2013 National Geographic Society, i-cubed

98°19'W 98°18'30"W 98°18'W 98°17'30"W 98°17'W 98°16'30"W 98°16'W 98°15'30"W 98°15'W 98°14'30"W 98°14'W 98°13'30"W 98°13'W