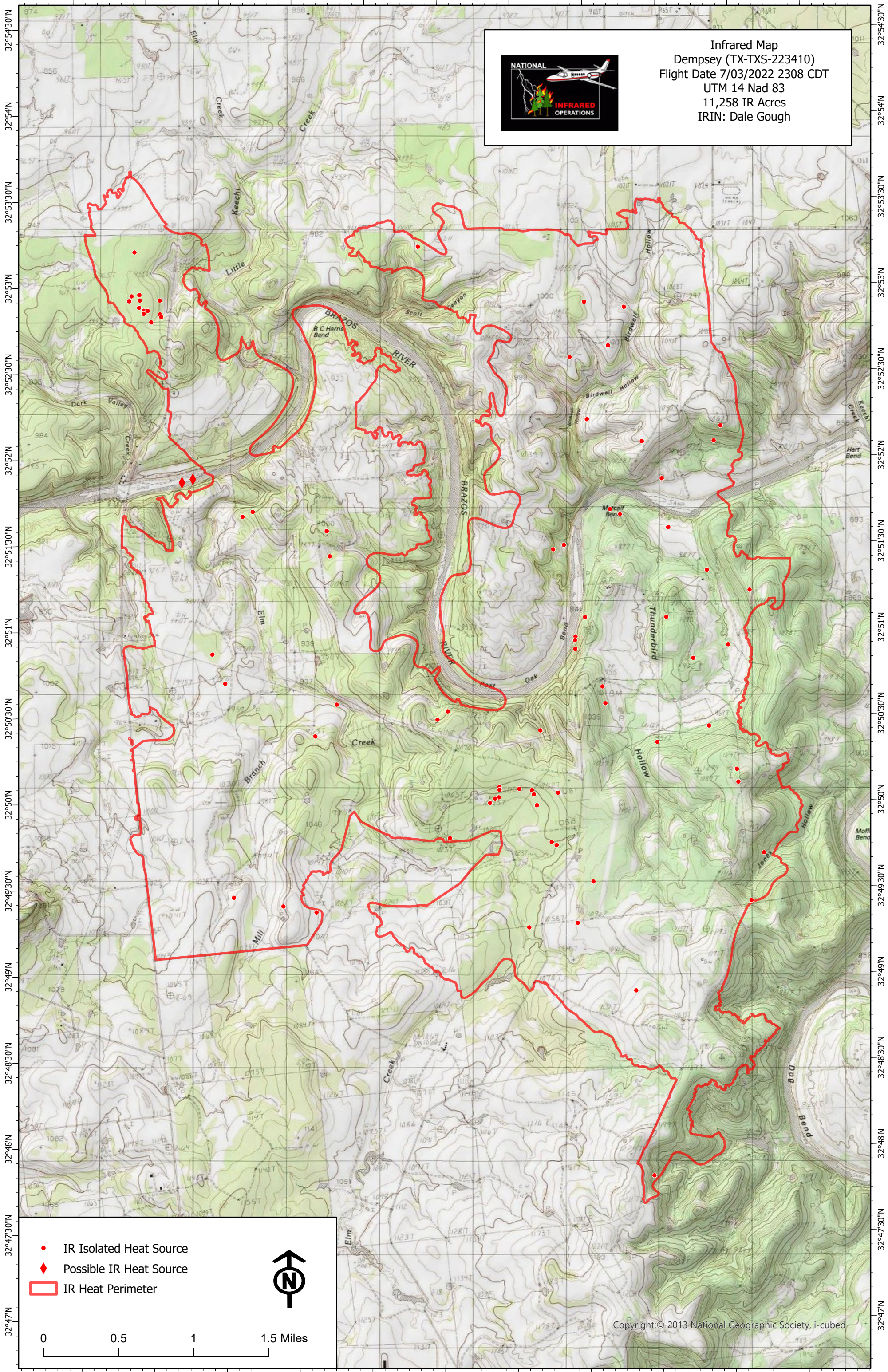



98°18'30"W 98°18'W 98°17'30"W 98°17'W 98°16'30"W 98°16'W 98°15'30"W 98°15'W 98°14'30"W 98°14'W 98°13'30"W



Infrared Map
 Dempsey (TX-TXS-223410)
 Flight Date 7/03/2022 2308 CDT
 UTM 14 Nad 83
 11,258 IR Acres
 IRIN: Dale Gough



- IR Isolated Heat Source
- ◆ Possible IR Heat Source
- ▭ IR Heat Perimeter



0 0.5 1 1.5 Miles

98°18'30"W 98°18'W 98°17'30"W 98°17'W 98°16'30"W 98°16'W 98°15'30"W 98°15'W 98°14'30"W 98°14'W 98°13'30"W