

96°32'30"W

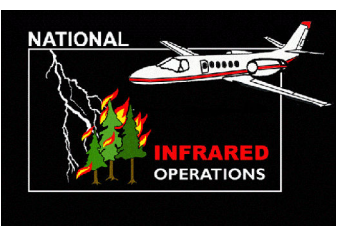
96°32'0"W

96°31'30"W

96°31'0"W

29°40'0"N
29°39'30"N
29°39'0"N
29°38'30"N
29°38'0"N
29°37'30"N

29°40'0"N
29°39'30"N
29°39'0"N
29°38'30"N
29°38'0"N
29°37'30"N



Infrared Map

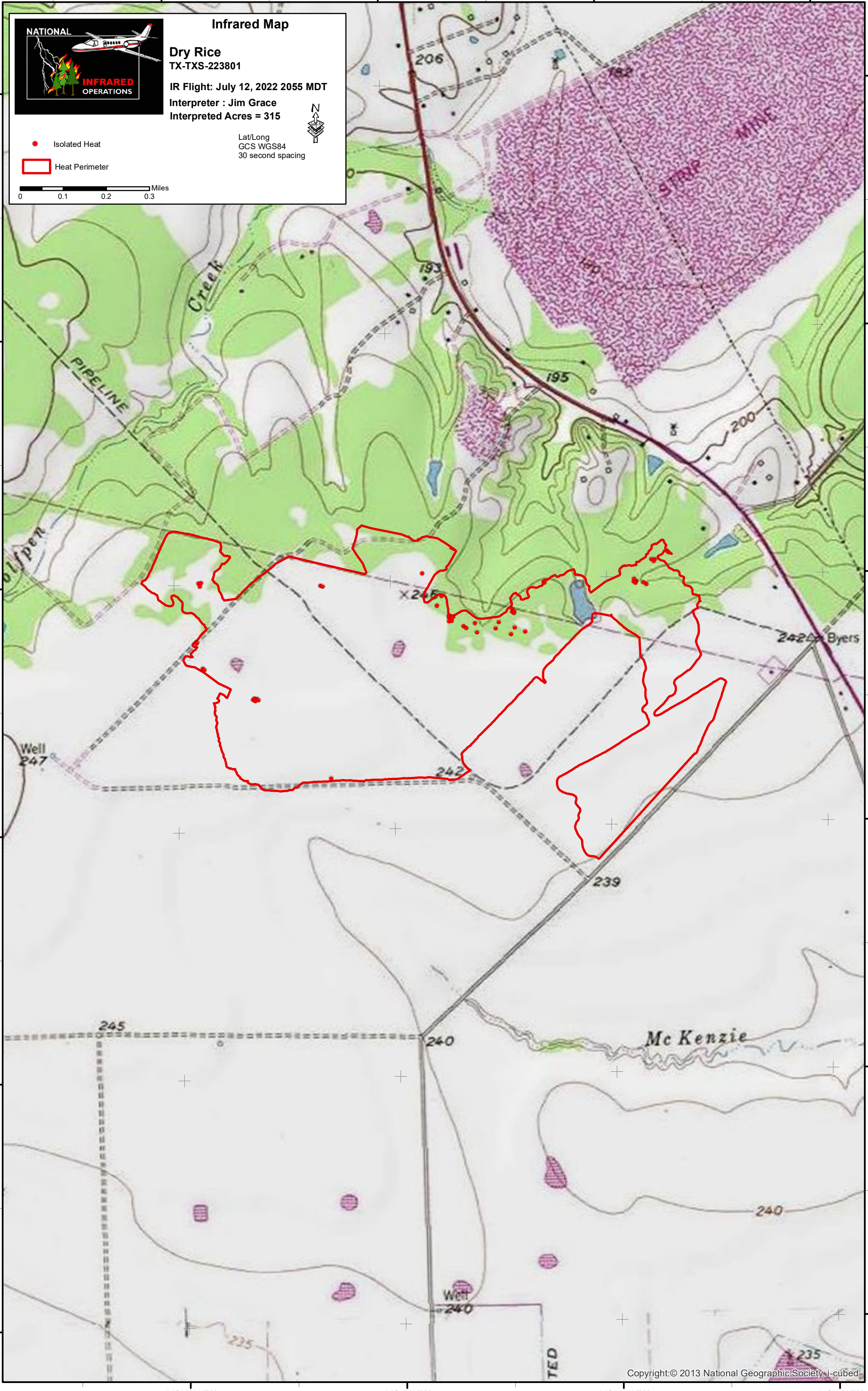
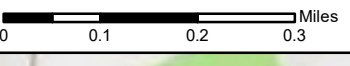
Dry Rice
TX-TXS-223801

IR Flight: July 12, 2022 2055 MDT
Interpreter: Jim Grace
Interpreted Acres = 315

Lat/Long
GCS WGS84
30 second spacing



- Isolated Heat
- ▭ Heat Perimeter



96°32'30"W

96°32'0"W

96°31'30"W

96°31'0"W