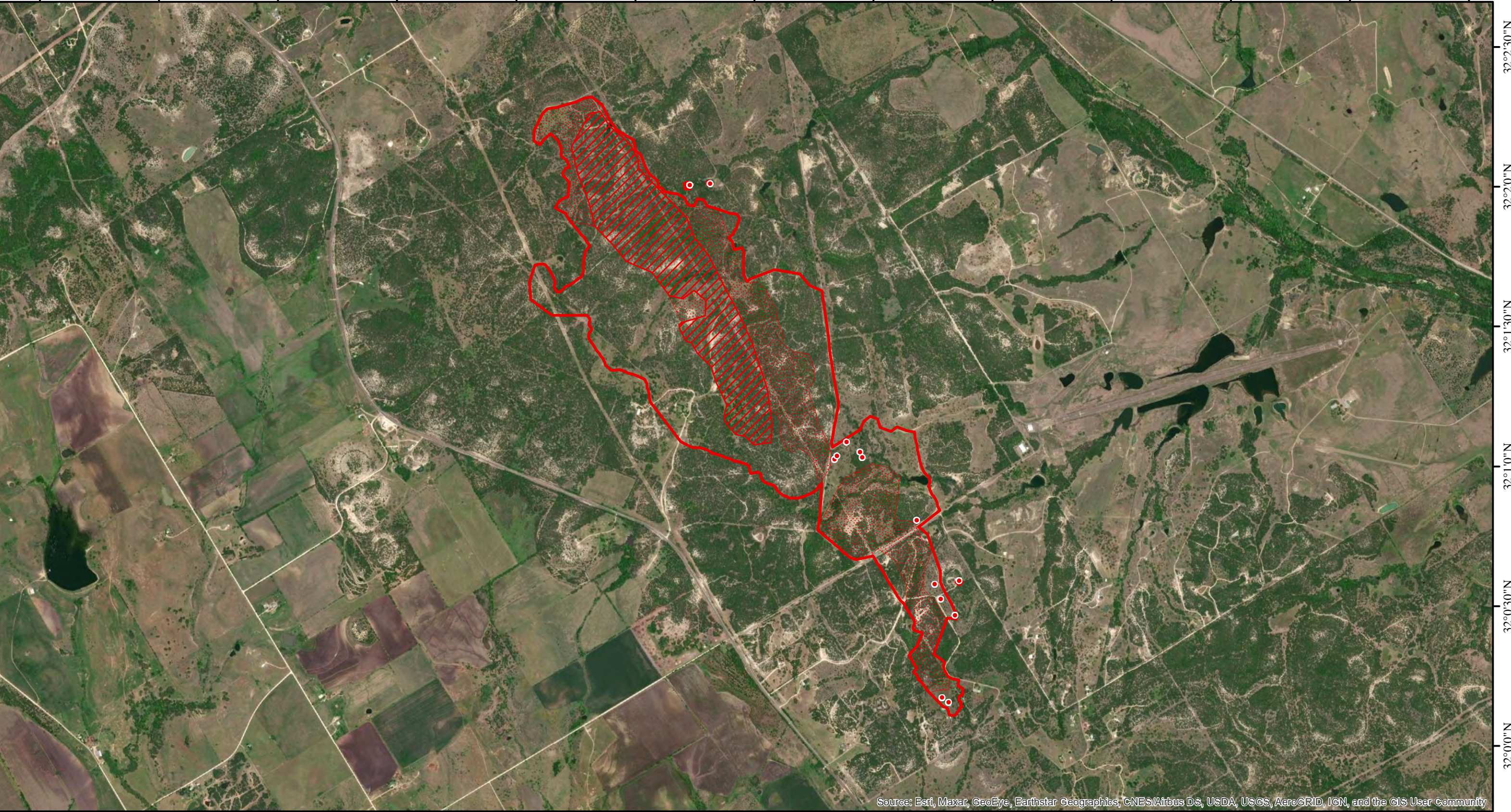


97°45'30"W 97°45'0"W 97°44'30"W 97°44'0"W 97°43'30"W 97°43'0"W 97°42'30"W 97°42'0"W 97°41'30"W 97°41'0"W 97°40'30"W 97°40'0"W 97°39'30"W



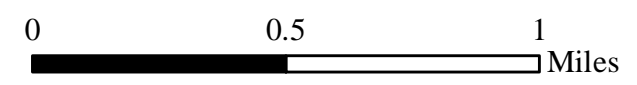
Source: Esri, Maxar, GeoEye, Earthstar Geographics, CNES/Airbus DS, USDA, USGS, AeroGRID, IGN, and the GIS User Community

97°45'30"W 97°45'0"W 97°44'30"W 97°44'0"W 97°43'30"W 97°43'0"W 97°42'30"W 97°42'0"W 97°41'30"W 97°41'0"W 97°40'30"W 97°40'0"W 97°39'30"W

INFRARED MAP
HARD CASTLE
TX-TXS-0223679
Infrared (Interpreted) Acres: 860
July 7, 2022 @ 2145 CDT



IRIN: Cheron Ferland
Duluth, MN
Nad 83 Zone 14



- Isolated Heat
- Heat Perimeter
- Intense Heat
- Scattered Heat