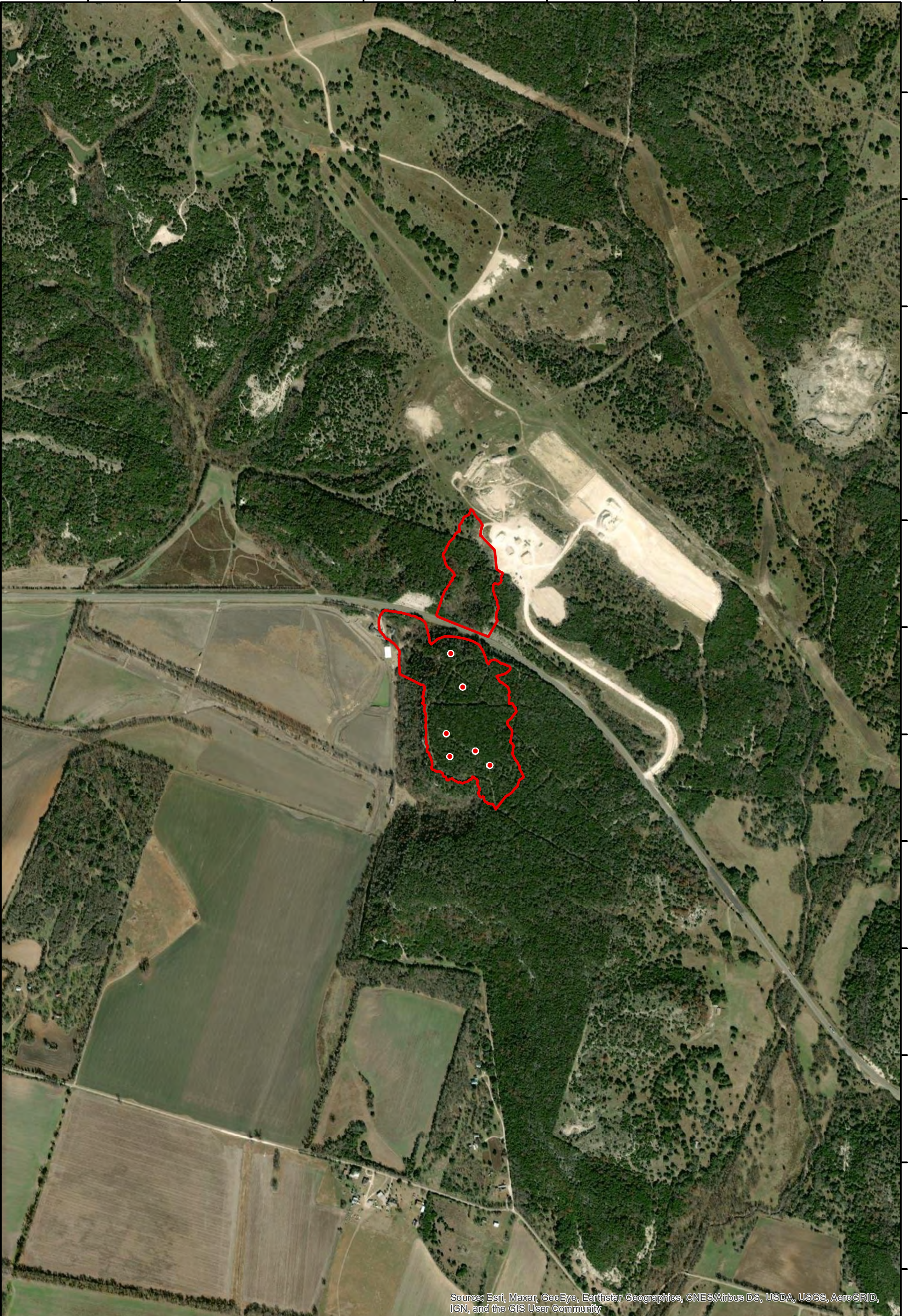


97°33'20"W 97°33'10"W 97°33'0"W 97°32'50"W 97°32'40"W 97°32'30"W 97°32'20"W 97°32'10"W 97°32'0"W

31°24'20"N
31°24'10"N
31°24'0"N
31°23'50"N
31°23'40"N
31°23'30"N
31°23'20"N
31°23'10"N
31°23'0"N
31°22'50"N
31°22'40"N
31°22'30"N

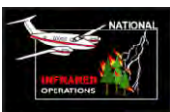
31°24'20"N
31°24'10"N
31°24'0"N
31°23'50"N
31°23'40"N
31°23'30"N
31°23'20"N
31°23'10"N
31°23'0"N
31°22'50"N
31°22'40"N
31°22'30"N



Source: Esri, Maxar, GeoEye, Earthstar Geographics, CNES/Airbus DS, USDA, USGS, AeroGRID, IGN, and the GIS User Community

**INFRARED MAP
POST OAK
TX-TXS-223669**

Infrared (Interpreted) Acres: 39
July 9, 2022 @ 0137 CDT



*IRIN: Cheron Ferland
Duluth, MN
Nad 83 UTM Zone 14*

0 0.25 0.5 Miles



• Isolated Heat
Heat Perimeter