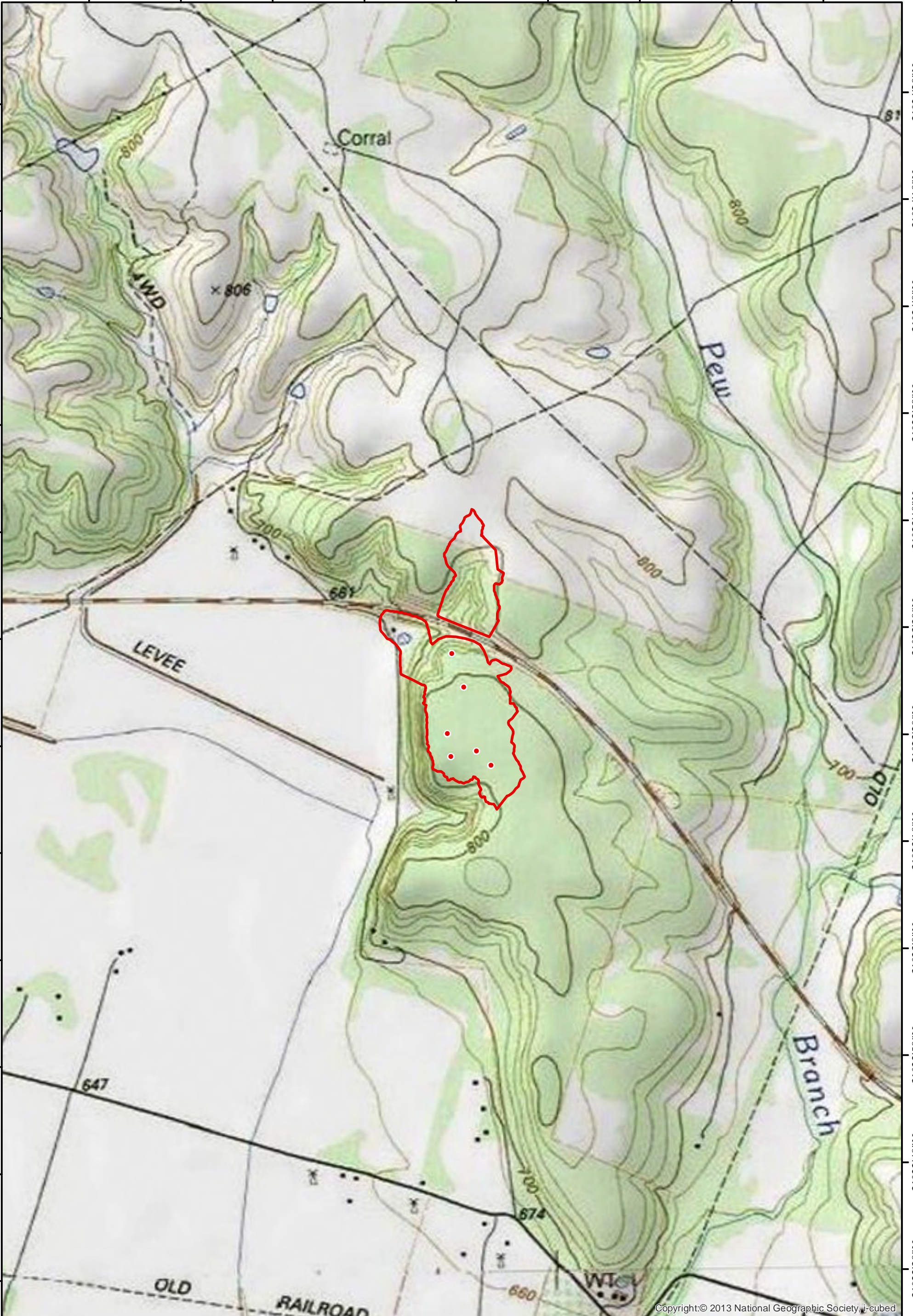


97°33'20"W 97°33'10"W 97°33'0"W 97°32'50"W 97°32'40"W 97°32'30"W 97°32'20"W 97°32'10"W 97°32'0"W

31°24'20"N
31°24'10"N
31°24'0"N
31°23'50"N
31°23'40"N
31°23'30"N
31°23'20"N
31°23'10"N
31°23'0"N
31°22'50"N
31°22'40"N
31°22'30"N

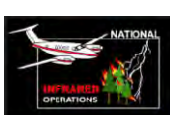
31°24'20"N
31°24'10"N
31°24'0"N
31°23'50"N
31°23'40"N
31°23'30"N
31°23'20"N
31°23'10"N
31°23'0"N
31°22'50"N
31°22'40"N
31°22'30"N



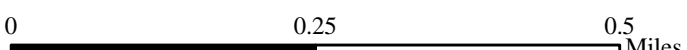
Copyright:© 2013 National Geographic Society, i-cubed

97°33'30"W 97°33'20"W 97°33'10"W 97°33'0"W 97°32'50"W 97°32'40"W 97°32'30"W 97°32'20"W 97°32'10"W 97°32'0"W

INFRARED MAP
 POST OAK
 TX-TXS-223669
 Infrared (Interpreted) Acres: 39
 July 9, 2022 @ 0137 CDT



IRIN: Cheron Ferland
 Duluth, MN
 Nad 83 UTM Zone 14



- Isolated Heat
- ⊞ Heat Perimeter