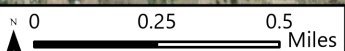
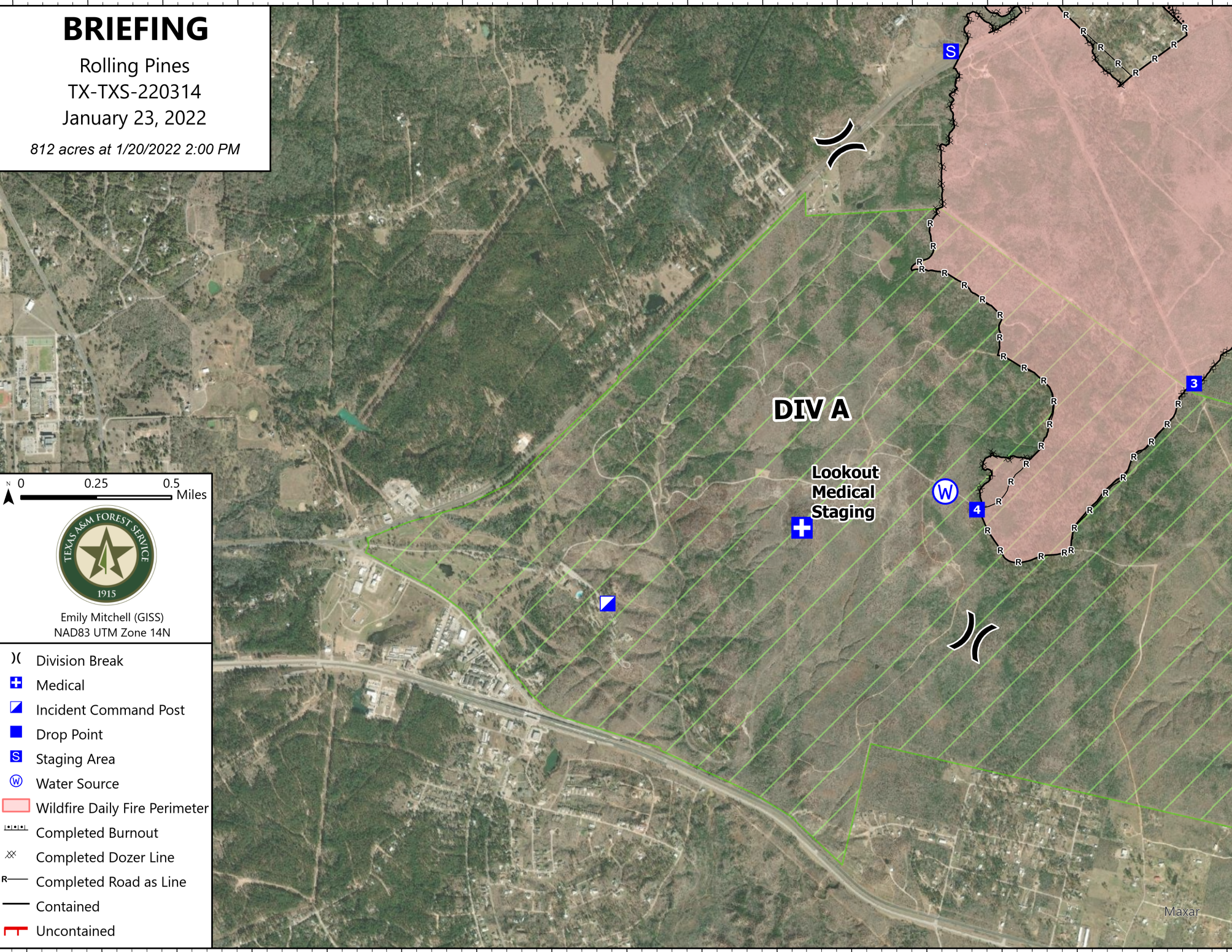


# BRIEFING

Rolling Pines  
TX-TXS-220314  
January 23, 2022

812 acres at 1/20/2022 2:00 PM



Emily Mitchell (GISS)  
NAD83 UTM Zone 14N

- (X) Division Break
- + Medical
- ▣ Incident Command Post
- Drop Point
- S Staging Area
- ⊙ Water Source
- ▭ Wildfire Daily Fire Perimeter
- ⋯ Completed Burnout
- ⊗ Completed Dozer Line
- R Completed Road as Line
- Contained
- ┌ Uncontained

**DIV A**

**Lookout  
Medical  
Staging**

Maxar