

98°49'30"W

98°49'0"W

98°48'30"W

98°48'0"W

33°0'0"N

32°59'30"N

32°59'0"N

32°58'30"N

32°58'0"N


33°0'0"N

32°59'30"N

32°59'0"N

32°58'30"N

32°58'0"N

NATIONAL

INFRARED OPERATIONS


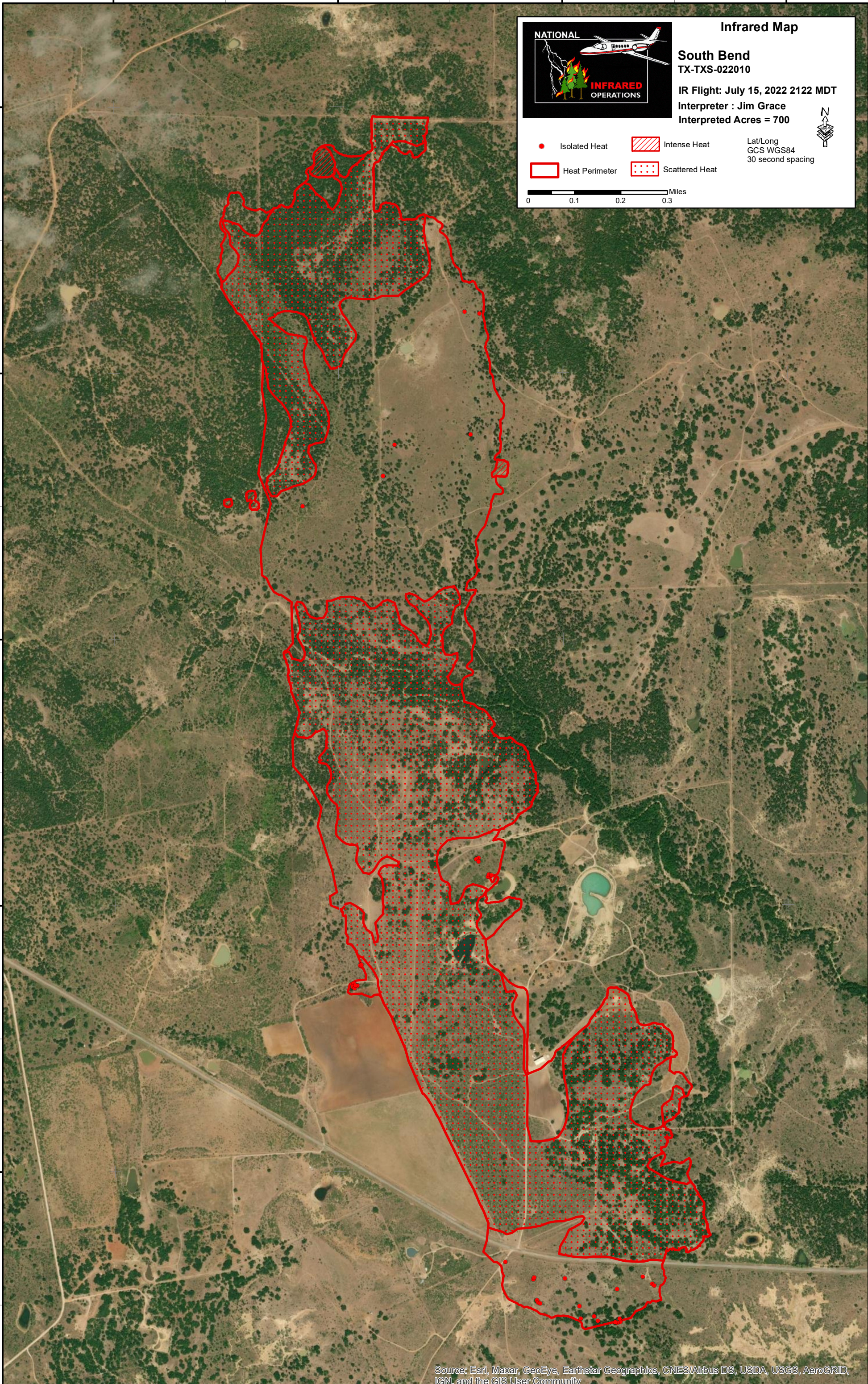
Infrared Map
South Bend
 TX-TXS-022010
 IR Flight: July 15, 2022 2122 MDT
 Interpreter : Jim Grace
 Interpreted Acres = 700

Lat/Long
 GCS WGS84
 30 second spacing

Isolated Heat
 Intense Heat
 Scattered Heat

Heat Perimeter

0 0.1 0.2 0.3 Miles

Source: Esri, Maxar, GeoEye, Earthstar Geographics, CNES/Airbus DS, USDA, USGS, AeroGRID, IGN, and the GIS User Community

98°49'30"W

98°49'0"W

98°48'30"W

98°48'0"W