

98°49'30"W

98°49'0"W

98°48'30"W

98°48'0"W

33°0'0"N

32°59'30"N

32°59'0"N

32°58'30"N

32°58'0"N

33°0'0"N

32°59'30"N

32°59'0"N

32°58'30"N

32°58'0"N



Infrared Map

South Bend
TX-TXS-022010

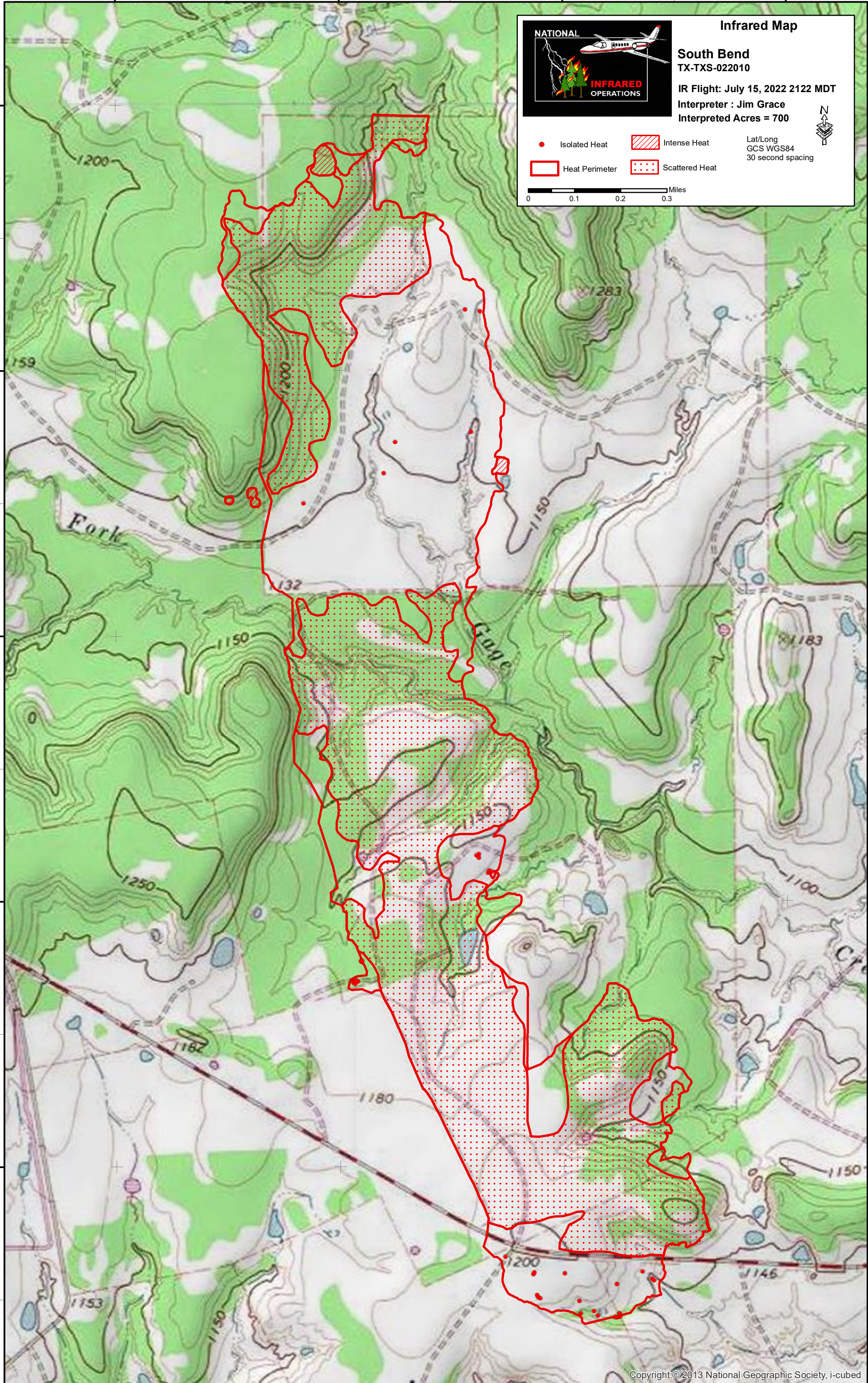
IR Flight: July 15, 2022 2122 MDT

Interpreter : Jim Grace
Interpreted Acres = 700

Lat/Long
GCS WGS84
30 second spacing



- Isolated Heat
- Heat Perimeter
- Intense Heat
- Scattered Heat



98°49'30"W

98°49'0"W

98°48'30"W

98°48'0"W