

98°49'30"W

98°49'0"W

98°48'30"W

98°48'0"W

33°0'0"N

32°59'30"N

32°59'0"N

32°58'30"N

32°58'0"N

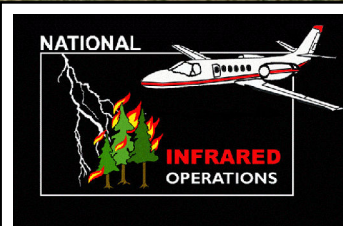
33°0'0"N

32°59'30"N

32°59'0"N

32°58'30"N

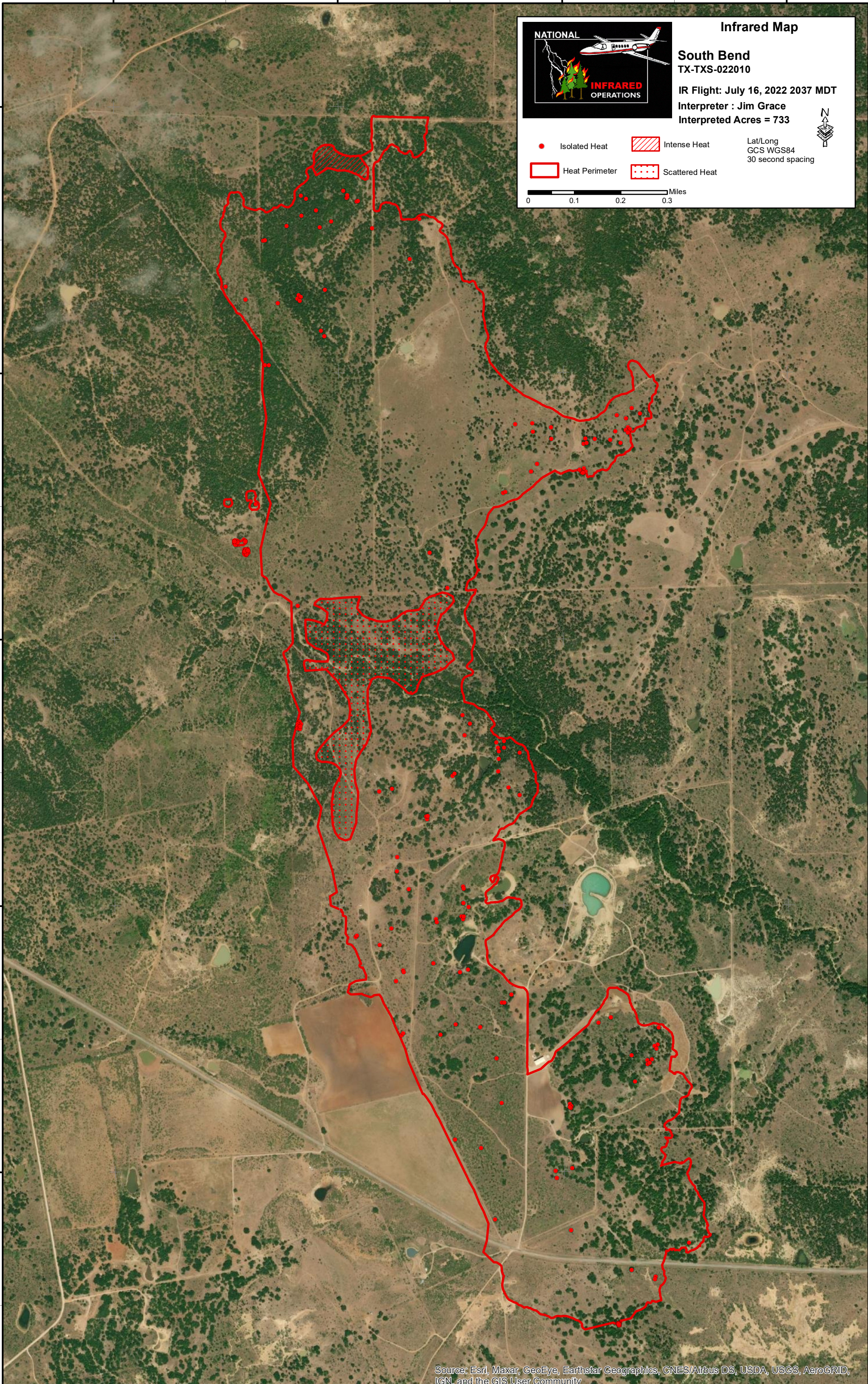
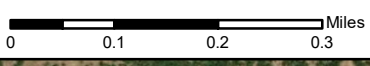
32°58'0"N



**Infrared Map**  
**South Bend**  
 TX-TXS-022010  
 IR Flight: July 16, 2022 2037 MDT  
 Interpreter : Jim Grace  
 Interpreted Acres = 733

- Isolated Heat
- Intense Heat
- Heat Perimeter
- Scattered Heat

Lat/Long  
 GCS WGS84  
 30 second spacing



Source: Esri, Maxar, GeoEye, Earthstar Geographics, CNES/Airbus DS, USDA, USGS, AeroGRID, IGN, and the GIS User Community

98°49'30"W

98°49'0"W

98°48'30"W

98°48'0"W