

98°49'30"W

98°49'0"W

98°48'30"W

98°48'0"W

33°0'0"N

32°59'30"N

32°59'0"N

32°58'30"N

32°58'0"N

33°0'0"N

32°59'30"N

32°59'0"N

32°58'30"N

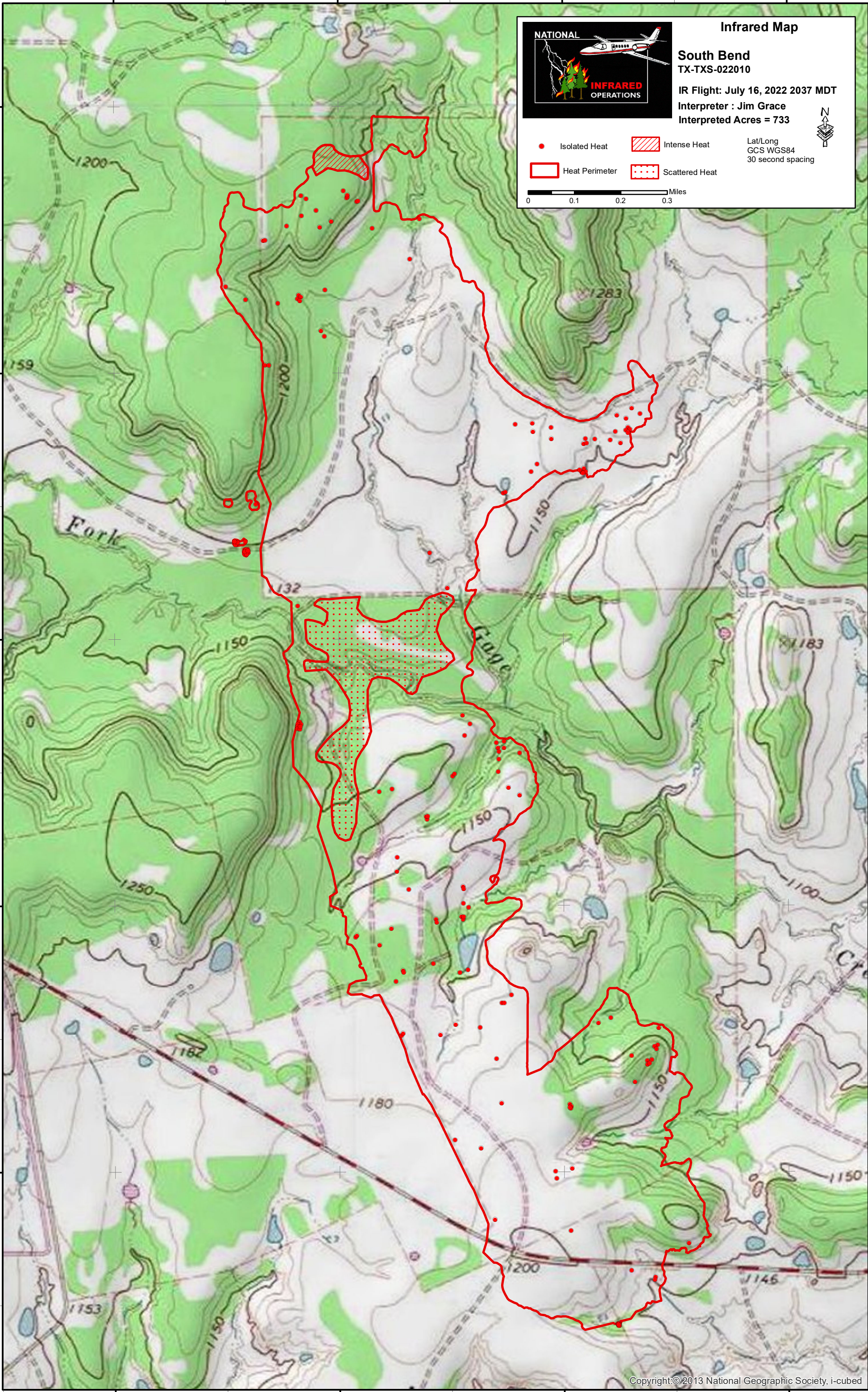
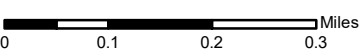
32°58'0"N



Infrared Map
South Bend
 TX-TXS-022010
 IR Flight: July 16, 2022 2037 MDT
 Interpreter: Jim Grace
 Interpreted Acres = 733

- Isolated Heat
- Heat Perimeter
- Intense Heat
- Scattered Heat

Lat/Long
 GCS WGS84
 30 second spacing



98°49'30"W

98°49'0"W

98°48'30"W

98°48'0"W