

95°33'30"W

95°33'0"W

95°32'30"W

95°32'0"W

95°31'30"W

95°31'0"W

30°54'30"N

30°54'0"N

30°53'30"N

30°53'0"N

30°52'30"N

30°52'0"N

30°51'30"N

30°51'0"N

30°54'30"N

30°54'0"N

30°53'30"N

30°53'0"N

30°52'30"N

30°52'0"N

30°51'30"N

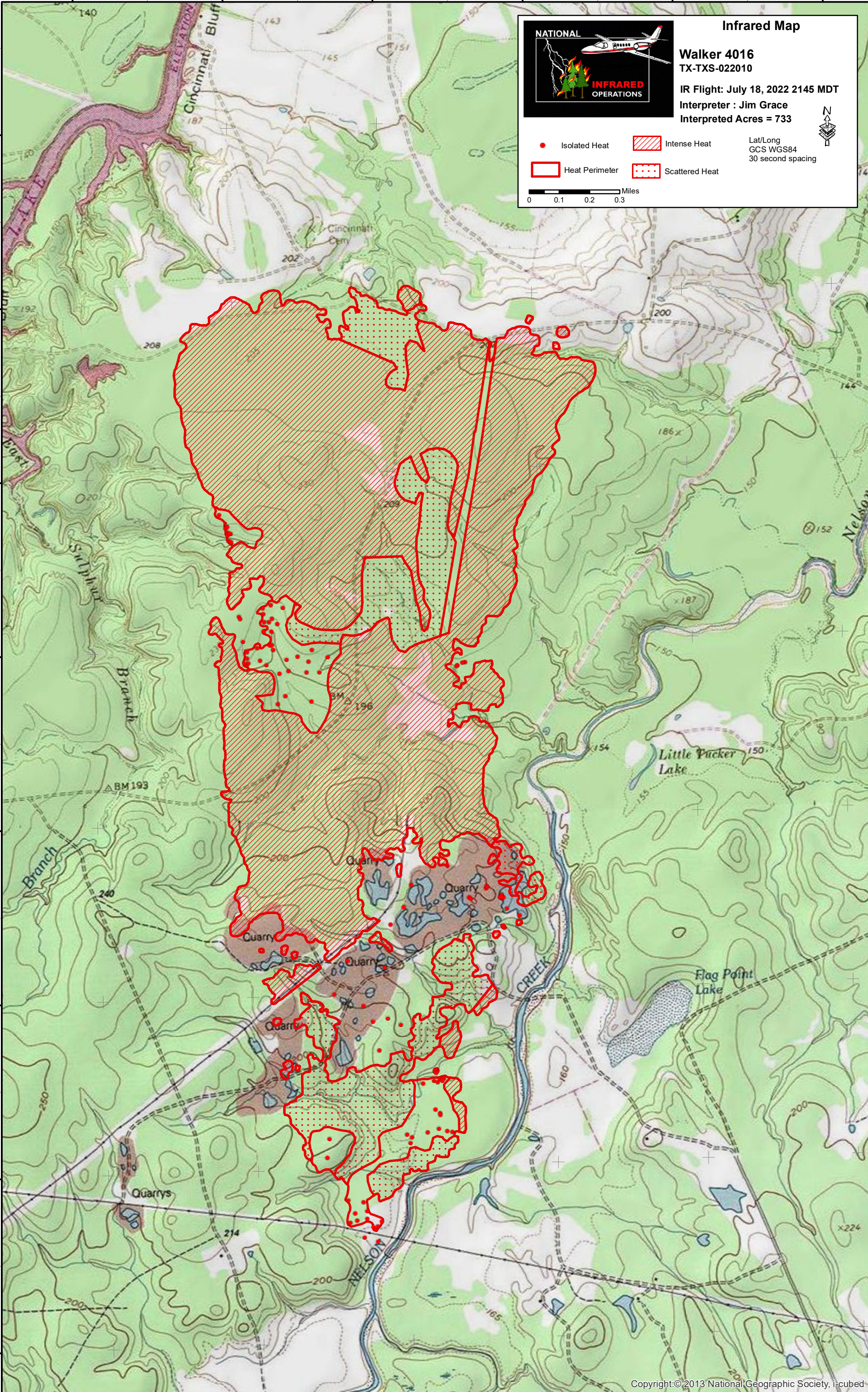
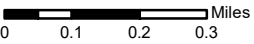
30°51'0"N



Infrared Map
Walker 4016
 TX-TXS-022010
 IR Flight: July 18, 2022 2145 MDT
 Interpreter : Jim Grace
 Interpreted Acres = 733

- Isolated Heat
- Heat Perimeter
- Intense Heat
- Scattered Heat

Lat/Long
 GCS WGS84
 30 second spacing



95°33'30"W

95°33'0"W

95°32'30"W

95°32'0"W

95°31'30"W

95°31'0"W