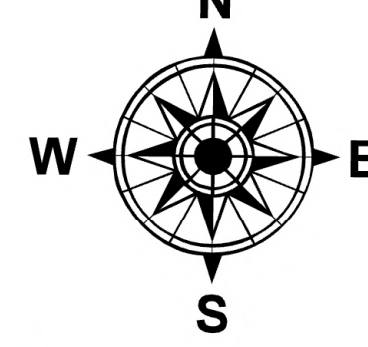


102°5'W 102°W 101°55'W 101°50'W 101°45'W 101°40'W 101°35'W 101°30'W 101°25'W 101°20'W 101°15'W 101°10'W 101°5'W 100°55'W 100°50'W 100°45'W 100°40'W 100°35'W 100°30'W 100°25'W 100°20'W 100°15'W 100°10'W 100°5'W 100°W 99°55'W

Transportation Map

Windy Deuce TX-TXS-240324
 Smokehouse Creek TX-TXS-240317
 Grape Vine Creek TX-TXS-240319

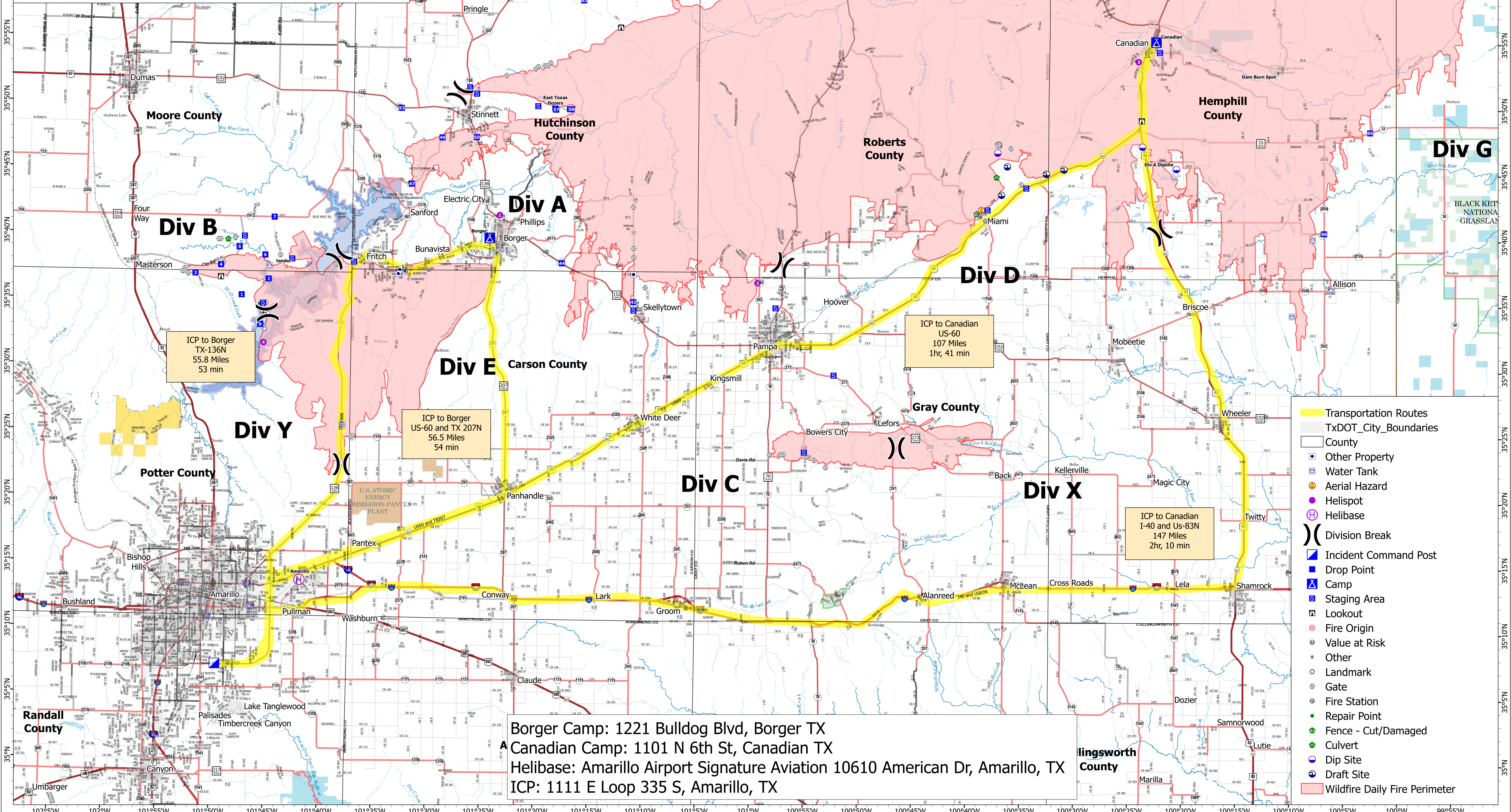
3/6/2024, Day



1:180,000 | wbaumann | 3/5/2024 2035

North American 1983 Datum, Lat/Long Grid

Incident Point	Label	Latitude WGS84 DDM	Longitude WGS84 DDM
Camp	Borger	35° 39.949' N	101° 24.569' W
Camp	Canadian	35° 55.216' N	100° 22.441' W
Drop Point	1	35° 35.381' N	101° 47.618' W
Drop Point	2	35° 36.222' N	101° 45.122' W
Drop Point	3	35° 36.996' N	101° 51.955' W
Drop Point	4	35° 37.659' N	101° 49.584' W
Drop Point	42	35° 35.177' N	101° 11.103' W
Drop Point	44	35° 38.081' N	101° 17.799' W
Drop Point	47	35° 44.001' N	101° 31.893' W
Drop Point	49	35° 47.546' N	101° 29.100' W
Drop Point	5	35° 39.029' N	101° 47.880' W
Drop Point	50	35° 47.599' N	101° 25.894' W
Drop Point	53	35° 49.765' N	101° 32.934' W
Drop Point	57	35° 49.729' N	101° 18.500' W
Drop Point	58	35° 49.819' N	101° 17.050' W
Drop Point	6	35° 38.844' N	101° 45.462' W
Drop Point	63	35° 58.108' N	101° 16.005' W
Drop Point	64	36° 04.057' N	101° 16.905' W
Drop Point	65	35° 58.739' N	101° 14.356' W
Drop Point	66	36° 04.934' N	101° 04.376' W
Drop Point	67	36° 05.012' N	101° 02.236' W
Drop Point	68	36° 06.949' N	100° 56.775' W
Drop Point	69	36° 06.969' N	100° 54.638' W
Drop Point	7	35° 41.333' N	101° 44.657' W
Drop Point	70	36° 06.033' N	100° 49.309' W
Drop Point	73	36° 06.012' N	100° 33.863' W
Drop Point	74	36° 05.224' N	100° 31.832' W
Drop Point	75	36° 01.807' N	100° 29.614' W
Drop Point	77	36° 05.103' N	100° 16.607' W
Drop Point	8	35° 51.143' N	101° 45.849' W
Drop Point	85	35° 48.336' N	100° 02.461' W
Drop Point	88	35° 40.656' N	100° 06.743' W
Helibase	Amarillo	35° 13.739' N	101° 41.878' W
Helibase	1	35° 41.694' N	101° 23.656' W
Helibase	2	35° 56.713' N	100° 59.552' W
Helibase	3	35° 53.730' N	100° 24.091' W
Helibase	4	35° 51.767' N	101° 45.527' W
Incident Command Post		35° 07.271' N	101° 49.635' W



ICP to Borger
 TX-136N
 55.8 Miles
 53 min

ICP to Borger
 US-60 and TX 207N
 56.5 Miles
 54 min

ICP to Canadian
 US-60
 107 Miles
 1hr, 41 min

ICP to Canadian
 I-40 and US-83N
 147 Miles
 2hr, 10 min

Borger Camp: 1221 Bulldog Blvd, Borger TX
 Canadian Camp: 1101 N 6th St, Canadian TX
 Helibase: Amarillo Airport Signature Aviation 10610 American Dr, Amarillo, TX
 ICP: 1111 E Loop 335 S, Amarillo, TX

- Transportation Routes
- TxDOT_City_Boundaries
- County
- Other Property
- Water Tank
- Aerial Hazard
- Helispot
- Helibase
- Division Break
- Incident Command Post
- Drop Point
- Camp
- Staging Area
- Lookout
- Fire Origin
- Value at Risk
- Other
- Landmark
- Gate
- Fire Station
- Repair Point
- Fence - Cut/Damaged
- Culvert
- Dip Site
- Draft Site
- Wildfire Daily Fire Perimeter