

Air Operations

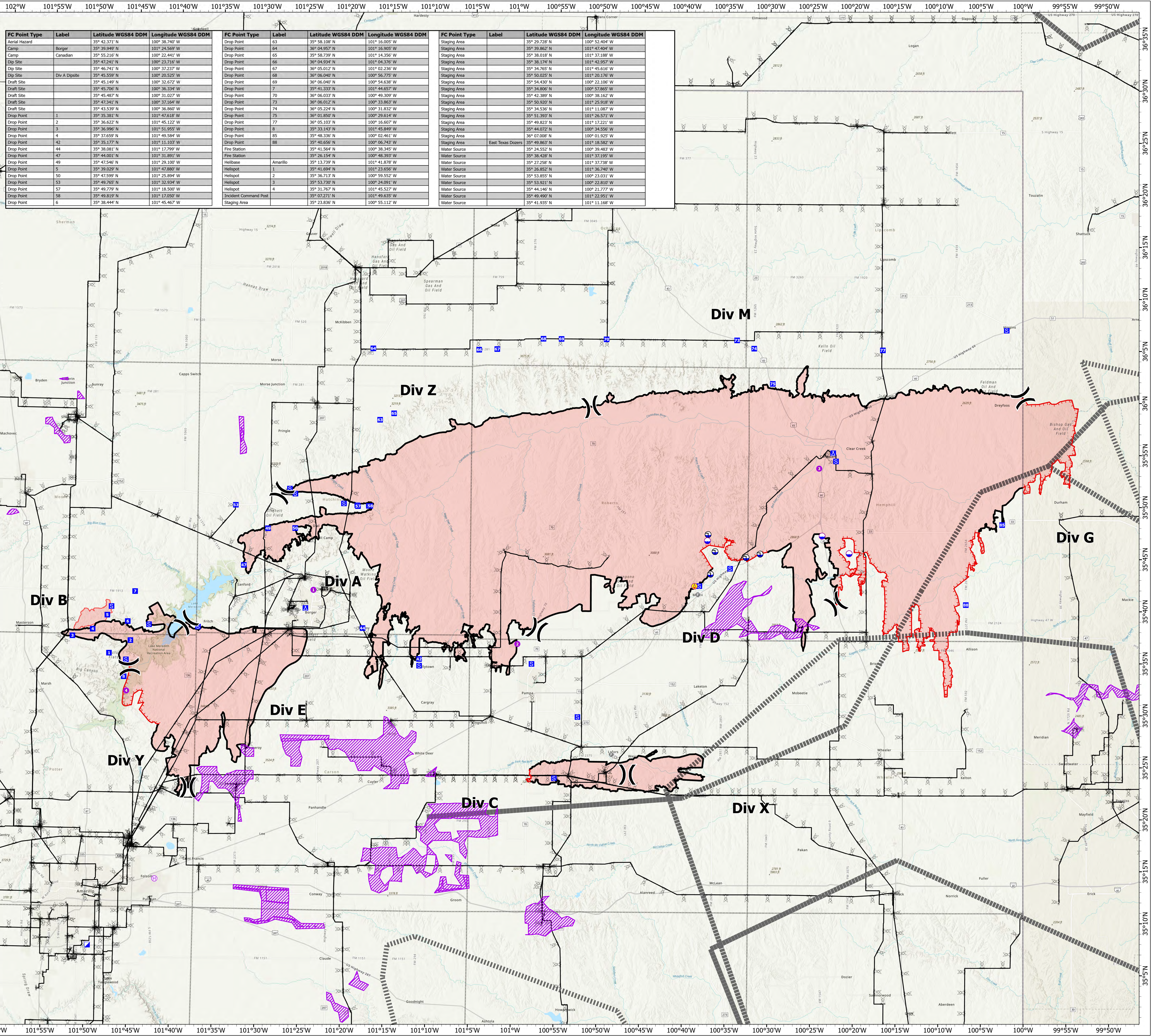
Smokehouse Creek
TX-TXS-240317

3/7/2024, Day

1,058,482 acres at 3/06/2024 2016



- Aerial Hazard
- Helispot
- Helibase
- Division Break
- Incident Command Post
- Drop Point
- Camp
- Staging Area
- Fire Station
- Dip Site
- Draft Site
- Electric Powerlines
- Military Training Route
- Contained
- Uncontained
- Wind Turbines
- Wildfire Daily Fire Perimeter
- County



FC Point Type	Label	Latitude WGS84 DDM	Longitude WGS84 DDM	FC Point Type	Label	Latitude WGS84 DDM	Longitude WGS84 DDM	FC Point Type	Label	Latitude WGS84 DDM	Longitude WGS84 DDM
Aerial Hazard		35° 42.371' N	100° 38.740' W	Drop Point	63	35° 58.108' N	101° 16.005' W	Staging Area		35° 29.728' N	100° 52.404' W
Camp	Borger	35° 39.949' N	101° 24.569' W	Drop Point	64	36° 04.957' N	101° 16.905' W	Staging Area		35° 39.862' N	101° 47.404' W
Camp	Canadian	35° 55.216' N	100° 22.441' W	Drop Point	65	35° 58.739' N	101° 14.356' W	Staging Area		35° 38.018' N	101° 37.186' W
Dip Site		35° 42.241' N	100° 23.716' W	Drop Point	66	36° 04.934' N	101° 04.376' W	Staging Area		35° 38.174' N	101° 42.957' W
Dip Site	Div A Dipsite	35° 46.741' N	100° 37.237' W	Drop Point	67	36° 05.012' N	101° 02.236' W	Staging Area		35° 34.765' N	101° 45.616' W
Draft Site		35° 45.339' N	100° 20.525' W	Drop Point	68	36° 06.960' N	100° 56.775' W	Staging Area		35° 50.025' N	101° 26.176' W
Draft Site		35° 45.149' N	100° 32.672' W	Drop Point	69	36° 06.040' N	100° 54.638' W	Staging Area		35° 54.430' N	100° 22.106' W
Draft Site		35° 45.706' N	100° 36.334' W	Drop Point	7	35° 41.333' N	101° 44.657' W	Staging Area		35° 34.806' N	100° 57.865' W
Draft Site		35° 45.467' N	100° 31.027' W	Drop Point	70	36° 06.033' N	100° 49.309' W	Staging Area		35° 42.389' N	100° 38.162' W
Draft Site		35° 47.341' N	100° 37.164' W	Drop Point	73	36° 06.012' N	100° 33.867' W	Staging Area		35° 50.920' N	101° 25.918' W
Draft Site		35° 43.539' N	100° 36.860' W	Drop Point	74	36° 05.224' N	100° 31.832' W	Staging Area		35° 34.536' N	101° 11.087' W
Drop Point	1	35° 45.339' N	101° 47.618' W	Drop Point	75	36° 01.850' N	100° 48.392' W	Staging Area		35° 51.393' N	101° 26.571' W
Drop Point	2	35° 36.622' N	101° 45.122' W	Drop Point	77	36° 05.103' N	100° 16.607' W	Staging Area		35° 49.823' N	101° 17.221' W
Drop Point	3	35° 36.990' N	101° 51.955' W	Drop Point	8	35° 33.143' N	101° 45.849' W	Staging Area		35° 44.072' N	100° 34.555' W
Drop Point	4	35° 37.659' N	101° 49.584' W	Drop Point	85	35° 48.336' N	100° 02.461' W	Staging Area		36° 07.008' N	100° 01.925' W
Drop Point	42	35° 35.177' N	101° 11.103' W	Drop Point	88	35° 40.656' N	100° 06.743' W	Staging Area	East Texas Dozers	35° 49.863' N	101° 18.582' W
Drop Point	44	35° 38.061' N	101° 17.799' W	Fire Station		35° 41.564' N	100° 38.345' W	Water Source		35° 24.552' N	100° 39.483' W
Drop Point	47	35° 44.001' N	101° 21.891' W	Fire Station		35° 26.544' N	100° 48.392' W	Water Source		35° 38.436' N	101° 32.189' W
Drop Point	49	35° 47.546' N	101° 29.100' W	Helibase	Amarillo	35° 13.739' N	101° 41.878' W	Water Source		35° 27.258' N	101° 37.738' W
Drop Point	5	35° 39.029' N	101° 47.880' W	Helispot	1	35° 41.694' N	101° 23.656' W	Water Source		35° 26.852' N	101° 36.740' W
Drop Point	50	35° 47.599' N	101° 25.894' W	Helispot	2	35° 36.713' N	100° 59.552' W	Water Source		35° 53.555' N	100° 23.031' W
Drop Point	53	35° 49.765' N	101° 32.934' W	Helispot	3	35° 53.730' N	100° 24.091' W	Water Source		35° 53.921' N	100° 22.811' W
Drop Point	57	35° 49.779' N	101° 18.500' W	Helispot	4	35° 31.767' N	101° 45.527' W	Water Source		35° 44.146' N	100° 21.777' W
Drop Point	58	35° 49.819' N	101° 17.050' W	Incident Command Post		35° 02.211' N	101° 49.639' W	Water Source		35° 49.800' N	101° 22.951' W
Drop Point	6	35° 38.444' N	101° 45.467' W	Staging Area		35° 23.836' N	100° 55.112' W	Water Source		35° 41.935' N	101° 11.168' W

