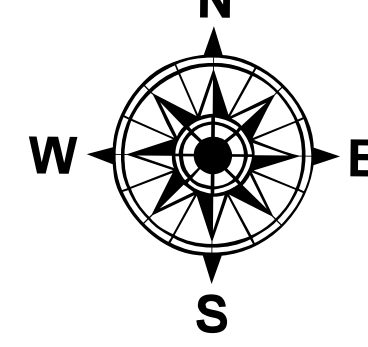


Transportation Map

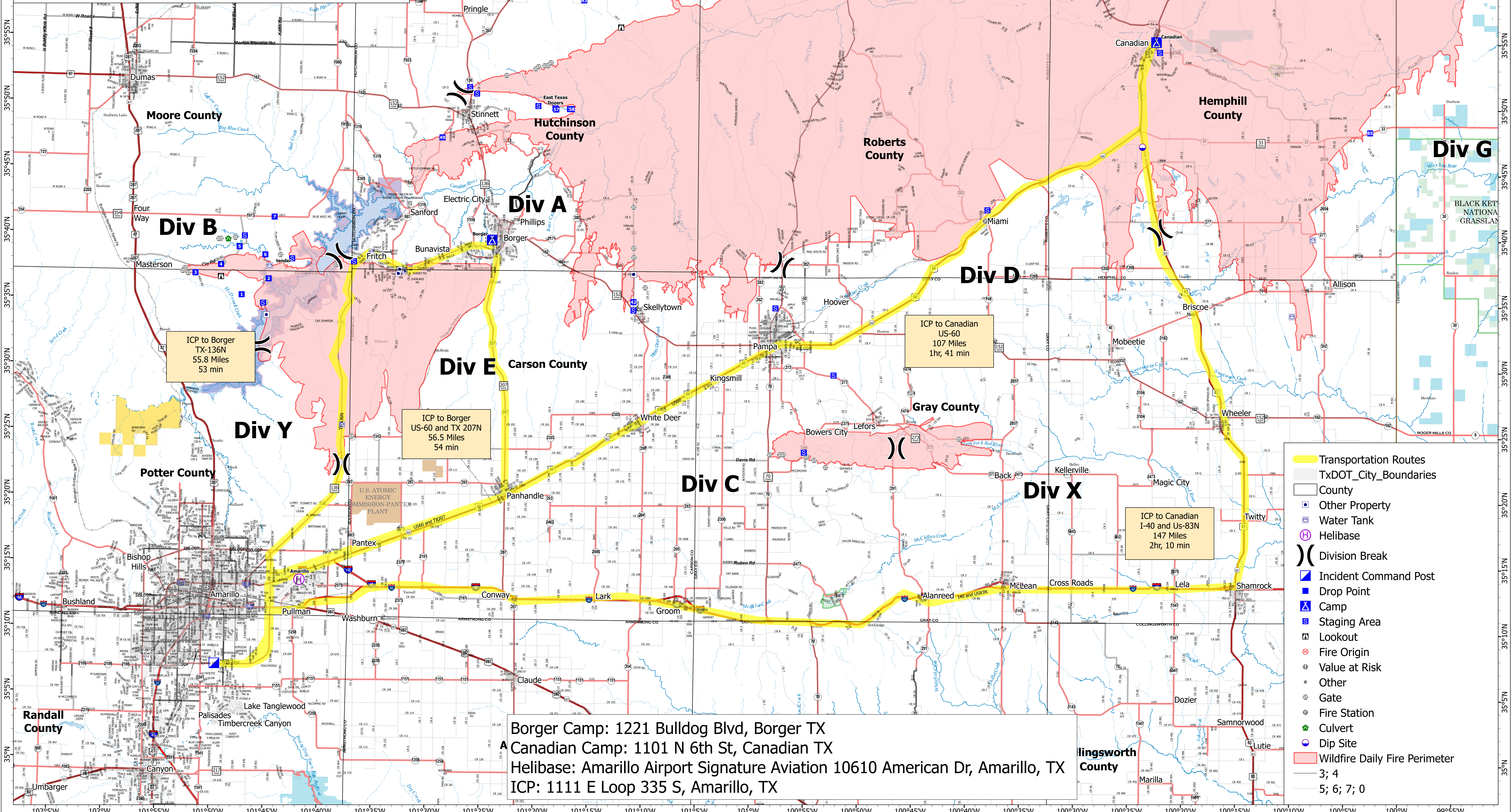
Windy Deuce TX-TXS-240324
 Smokehouse Creek TX-TXS-240317
 Grape Vine Creek TX-TXS-240319

3/3/2024, Day



1:180,000 | wbaumann | 3/2/2024 1816
 North American 1983 Datum, LatLong Grid

Incident Point	Label	Latitude WGS84 DDM	Longitude WGS84 DDM
Camp	Borger	35° 39.789' N	101° 24.334' W
Camp	Canadian	35° 55.216' N	100° 22.441' W
Drop Point	1	35° 35.381' N	101° 47.618' W
Drop Point	2	35° 36.522' N	101° 45.122' W
Drop Point	3	35° 36.996' N	101° 51.955' W
Drop Point	4	35° 37.659' N	101° 49.584' W
Drop Point	42	35° 35.177' N	101° 11.103' W
Drop Point	49	35° 47.546' N	101° 29.100' W
Drop Point	5	35° 39.029' N	101° 46.850' W
Drop Point	57	35° 49.729' N	101° 18.500' W
Drop Point	58	35° 49.819' N	101° 17.050' W
Drop Point	6	35° 38.444' N	101° 45.467' W
Drop Point	63	35° 58.108' N	101° 16.005' W
Drop Point	64	36° 04.957' N	101° 16.905' W
Drop Point	7	35° 41.333' N	101° 46.850' W
Drop Point	70	36° 06.033' N	100° 49.300' W
Drop Point	73	36° 06.012' N	100° 33.863' W
Drop Point	74	36° 05.224' N	100° 31.832' W
Drop Point	75	36° 01.850' N	100° 29.614' W
Drop Point	77	36° 05.103' N	100° 16.607' W
Drop Point	85	35° 48.336' N	100° 02.461' W
Helibase	Amarillo	35° 13.729' N	101° 41.878' W
Incident Command Post	Amarillo	35° 07.271' N	101° 49.635' W



ICP to Borger
 TX-136N
 55.8 Miles
 53 min

ICP to Borger
 US-60 and TX 207N
 56.5 Miles
 54 min

ICP to Canadian
 US-60
 107 Miles
 1hr, 41 min

ICP to Canadian
 I-40 and US-83N
 147 Miles
 2hr, 10 min

Borger Camp: 1221 Bulldog Blvd, Borger TX
 Canadian Camp: 1101 N 6th St, Canadian TX
 Helibase: Amarillo Airport Signature Aviation 10610 American Dr, Amarillo, TX
 ICP: 1111 E Loop 335 S, Amarillo, TX

- Transportation Routes
- TxDOT_City_Boundaries
- County
- Other Property
- Water Tank
- ⊕ Helibase
-) Division Break
- Incident Command Post
- Drop Point
- Camp
- Staging Area
- ⊗ Lookout
- ⊗ Fire Origin
- ⊗ Value at Risk
- ⊗ Other
- ⊗ Gate
- ⊗ Fire Station
- ⊗ Culvert
- ⊗ Dip Site
- Wildfire Daily Fire Perimeter
- 3; 4
- 5; 6; 7; 0