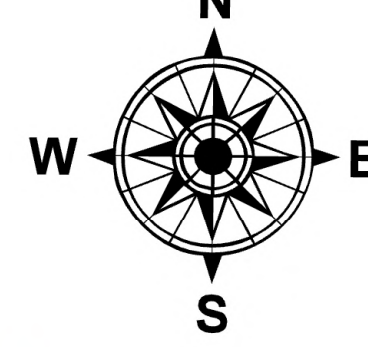


# Transportation Map

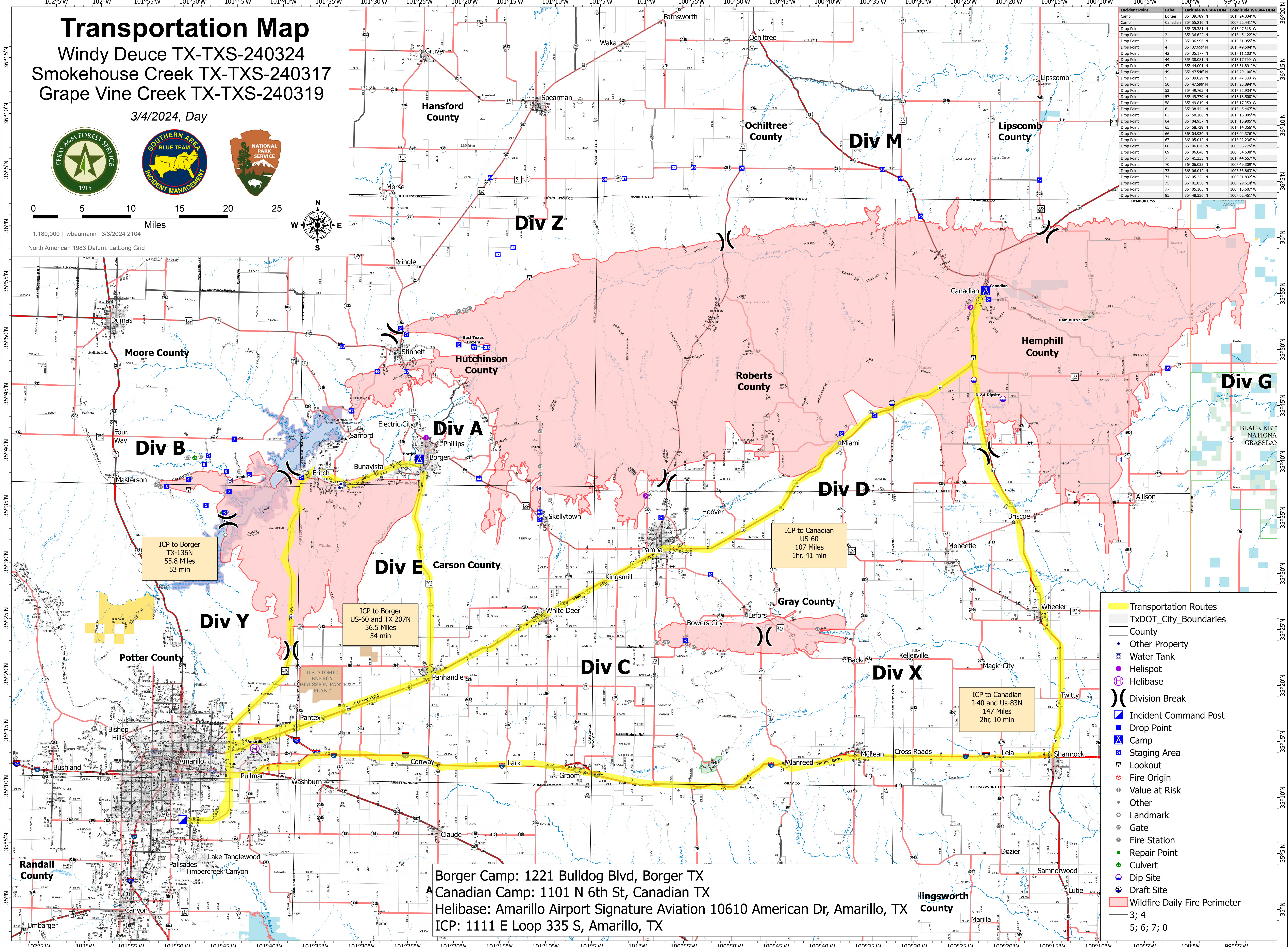
Windy Deuce TX-TXS-240324  
 Smokehouse Creek TX-TXS-240317  
 Grape Vine Creek TX-TXS-240319

3/4/2024, Day



1:180,000 | wbaumann | 3/3/2024 2104  
 North American 1983 Datum, Lat/Long Grid

Incident Point	Label	Latitude WGS84 DDM	Longitude WGS84 DDM
Camp	Borger	35° 39.789' N	101° 24.334' W
Camp	Canadian	35° 55.216' N	100° 22.441' W
Drop Point	1	35° 35.381' N	101° 47.618' W
Drop Point	2	35° 36.522' N	101° 45.132' W
Drop Point	3	35° 36.996' N	101° 51.955' W
Drop Point	4	35° 37.659' N	101° 49.584' W
Drop Point	42	35° 35.177' N	101° 11.103' W
Drop Point	44	35° 38.081' N	101° 17.799' W
Drop Point	47	35° 44.001' N	101° 31.891' W
Drop Point	49	35° 38.444' N	101° 28.100' W
Drop Point	5	35° 39.029' N	101° 47.889' W
Drop Point	50	35° 47.999' N	101° 25.894' W
Drop Point	53	35° 49.765' N	101° 32.934' W
Drop Point	57	35° 49.779' N	101° 18.500' W
Drop Point	58	35° 49.819' N	101° 17.050' W
Drop Point	6	35° 38.444' N	101° 45.467' W
Drop Point	63	35° 58.108' N	101° 16.005' W
Drop Point	64	36° 04.957' N	101° 16.905' W
Drop Point	65	35° 58.739' N	101° 14.356' W
Drop Point	66	36° 04.934' N	101° 04.376' W
Drop Point	67	36° 05.022' N	101° 02.238' W
Drop Point	68	36° 06.040' N	100° 56.775' W
Drop Point	69	36° 06.040' N	100° 54.638' W
Drop Point	7	35° 41.333' N	101° 44.657' W
Drop Point	70	36° 06.033' N	100° 49.309' W
Drop Point	73	36° 06.012' N	100° 33.863' W
Drop Point	74	36° 05.224' N	100° 47.050' W
Drop Point	75	36° 01.850' N	100° 29.614' W
Drop Point	77	36° 05.103' N	100° 16.607' W
Drop Point	85	35° 48.336' N	100° 02.461' W



ICP to Borger  
 TX-136N  
 55.8 Miles  
 53 min

ICP to Borger  
 US-60 and TX 207N  
 56.5 Miles  
 54 min

ICP to Canadian  
 US-60  
 107 Miles  
 1hr, 41 min

ICP to Canadian  
 I-40 and US-83N  
 147 Miles  
 2hr, 10 min

Borger Camp: 1221 Bulldog Blvd, Borger TX  
 Canadian Camp: 1101 N 6th St, Canadian TX  
 Helibase: Amarillo Airport Signature Aviation 10610 American Dr, Amarillo, TX  
 ICP: 1111 E Loop 335 S, Amarillo, TX

- Transportation Routes
- TxDOT\_City\_Boundaries
- County
- Other Property
- Water Tank
- Helispot
- Helibase
- Division Break
- Incident Command Post
- Drop Point
- Camp
- Staging Area
- Lookout
- Fire Origin
- Value at Risk
- Other
- Landmark
- Gate
- Fire Station
- Repair Point
- Culvert
- Dip Site
- Draft Site
- Wildfire Daily Fire Perimeter
- 3; 4
- 5; 6; 7; 0