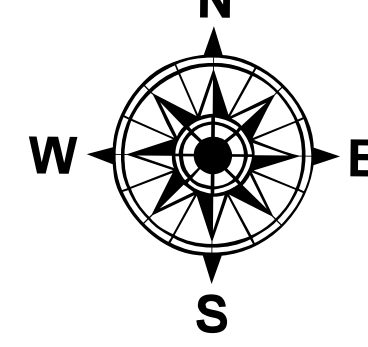


# Transportation Map

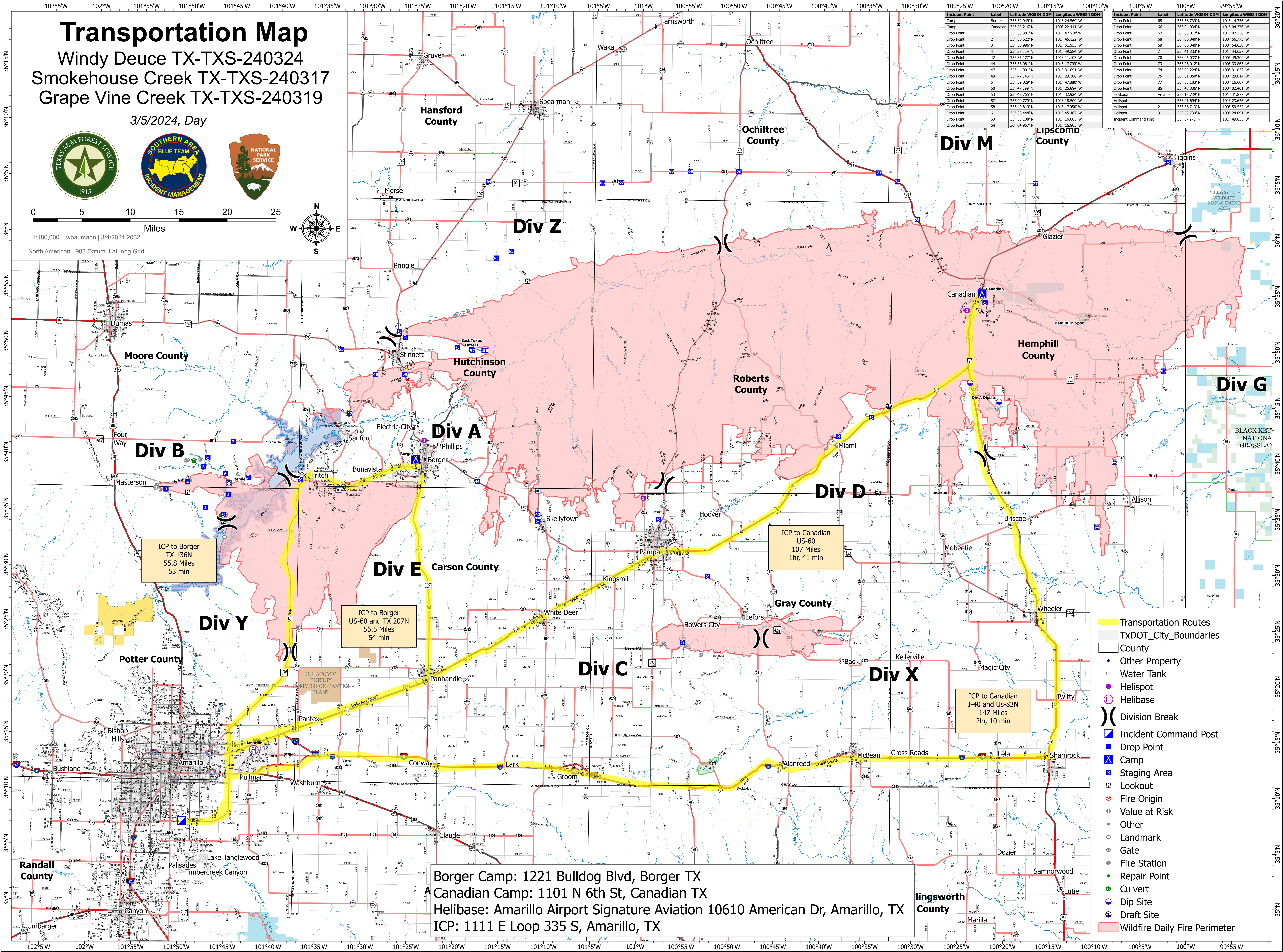
Windy Deuce TX-TXS-240324  
Smokehouse Creek TX-TXS-240317  
Grape Vine Creek TX-TXS-240319

3/5/2024, Day



1:180,000 | wbaumann | 3/4/2024 2032  
North American 1983 Datum, Lat/Long Grid

Incident Point	Label	Latitude WGS84 DDM	Longitude WGS84 DDM
Drop Point	65	35° 58.739' N	101° 14.356' W
Drop Point	66	36° 04.934' N	101° 04.376' W
Drop Point	67	36° 05.012' N	101° 02.236' W
Drop Point	68	36° 06.040' N	100° 56.775' W
Drop Point	69	36° 06.040' N	100° 54.638' W
Drop Point	7	35° 41.333' N	101° 44.657' W
Drop Point	70	36° 06.033' N	100° 49.309' W
Drop Point	73	36° 06.012' N	100° 33.863' W
Drop Point	74	36° 05.244' N	100° 31.832' W
Drop Point	75	36° 01.882' N	100° 29.614' W
Drop Point	77	36° 05.103' N	100° 16.607' W
Drop Point	85	35° 48.336' N	101° 02.461' W
Helibase	Anarillo	35° 13.739' N	101° 41.878' W
Helispot	1	35° 41.694' N	101° 23.656' W
Helispot	2	35° 36.737' N	100° 59.552' W
Helispot	3	35° 37.207' N	100° 24.091' W
Incident Command Post		35° 07.271' N	101° 49.635' W



ICP to Borger  
TX-136N  
55.8 Miles  
53 min

ICP to Borger  
US-60 and TX 207N  
56.5 Miles  
54 min

ICP to Canadian  
US-60  
107 Miles  
1hr, 41 min

ICP to Canadian  
I-40 and US-83N  
147 Miles  
2hr, 10 min

Borger Camp: 1221 Bulldog Blvd, Borger TX  
Canadian Camp: 1101 N 6th St, Canadian TX  
Helibase: Amarillo Airport Signature Aviation 10610 American Dr, Amarillo, TX  
ICP: 1111 E Loop 335 S, Amarillo, TX

- Transportation Routes
- TXDOT\_City\_Boundaries
- County
- Other Property
- Water Tank
- Helispot
- Helibase
- )) Division Break
- Incident Command Post
- Drop Point
- Camp
- Staging Area
- Lookout
- Fire Origin
- Value at Risk
- Other
- Landmark
- Gate
- Fire Station
- Repair Point
- Culvert
- Dip Site
- Draft Site
- Wildfire Daily Fire Perimeter