

# Lateral West Fire Great Dismal Swamp Incident Action Plan

**VA-GDR-11005**

**Day Shift  
August 20, 2011**

**Night Shift  
August 20/21, 2011**

[www.inciweb.org](http://www.inciweb.org)  
[lateralwest@gmail.com](mailto:lateralwest@gmail.com)

**Financial Codes:**

**FWS: 51580 -9141 – F9FY**

**NPS: 4504 – F9FY – E11**

**FS: PRF9FY - 1502**



<b>INCIDENT OBJECTIVES</b>	1. Incident Name	2. Date Prepared	3. Time Prepared
	<b>Lateral West</b>	<b>8/19/11</b>	<b>2100</b>
4. Operational Period <b>Day shift 0730-1930 August 20, 2011 Night Shift 1930-2400 and 0001-0730 August 21, 2011</b>			
5. General Control Objectives For The Incident (Include Alternatives)			
<ol style="list-style-type: none"> <li>1. Provide for firefighter and public safety by adhering to LCES and the 10 standard fire orders.</li> <li>2. Prevent fire from exiting Refuge boundaries.</li> <li>3. Mitigate smoke impacts to adjacent communities (Hamptons Roads) by coordinating with state transportation and public health officials.</li> <li>4. Minimize resource impact to include loss of organic soil or timber resources, which in turn will minimize smoke impacts to local communities.</li> <li>5. Manage the fire cost effectively for the values at risk by using cost projections identified in the WFDSS as a baseline.</li> <li>6. Provide for initial attack for additional fires that originate on the refuge.</li> </ol>			
6. Weather Forecast For Period			
<b>See attached weather forecast</b>			
7. General Safety Message			
<p><b>Pay Attention to Road Conditions</b></p> <p>Traffic congestion on the main roads into the fire makes travel on and off the line hazardous. Slow to 5 MPH when passing equipment or personnel.</p>			
8. ATTACHEMENTS (X IF ATTACHED)			
<input type="checkbox"/> Organization List - ICS 203 <input checked="" type="checkbox"/> Medical Plan - ICS 206 <input checked="" type="checkbox"/> Air Operations Summary <input checked="" type="checkbox"/> Division Assignment Lists - ICS 204 <input checked="" type="checkbox"/> Incident Map <input checked="" type="checkbox"/> Phone List <input checked="" type="checkbox"/> Communications Plan - ICS 205 <input checked="" type="checkbox"/> Traffic Plan <input checked="" type="checkbox"/> Tailgate Safety Form			
9. Prepared By (Planning Section Chief)		10. Approved By (Incident Commander)	
<b>Janan Hay Sharp</b>		<b>Mike Quesinberry</b>	

ORGANIZATION ASSIGNMENT LIST		9. Operations Section		
1. Incident Name <b>Lateral West Fire</b>		Chief	D.Bryant / G.Sanders(t)	
		Planning Ops	L.Wofford / K.Smith(t)	
		<b>a. Branch I - Divisions/Groups</b>		
2. Date 8/19/2011	3. Time 1800	Branch Director	Zeke Seabright/J.Collett (t)	
4. Operational Period Day Shift 8/20/2011 0730-1930 Night Shift 8/21: 1930-2400: 8/15: 0001-0700		Deputy		
		Division/Group	A	Justin Hanley
		Division/Group	D	Rob Wood /Mike Bot(t)
<b>5. Incident Commander and Staff</b>		Division/Group	F	Unstaffed
Incident Commander	Mike Quesinberry / Mike Petrucio	Division/Group		
		Division/Group		
Safety Officer	Brian Beisel /Pat Sheridan	<b>b. Branch II - Divisions/Groups</b>		
Information Officer	T.Farley(t)/C.Hibbard(t)/ R.Evenson(t)	Branch Director	Patrick Pearson / J. Koenig (t)	
Liaison Officer		Deputy		
<b>6. Agency Representatives</b>		Division/Group	B	Mike Reed
Agency	Name	Division/Group	C	Steve Smestead
FWS Refuge Manager	Cindy Lane	Division	Bull North	Dwight Snow/Mike Rice
FWS FMO	Timothy Craig	Division/Group	E	Mike Huneke
NC Dismal State Park	Signa Williams	Division/Group		
Army COE	Joel Scussel	<b>c. Groups</b>		
		Branch Director		
<b>7. Planning Section</b>		Deputy		
Chief	Janan Hay Sharp	Division/Group	Water I	Jon Wallace
Deputy	Pete Fischer (t)	Division/Group	Water II	Aaron Gay
Resources Unit	K. Chadwick	Division/Group	Night	Dalynn Parks
Demob Unit	Lisa Miller	Division/Group		
Situation Unit	John Andre	Group	Structure Protection	Glen Coley
GISS	Jason Hattersley /S. Laval	<b>d. Air Operations Branch</b>		
Fire Behavior	Michael Durfee	Air Operations Branch Director		Terry Harris
READ Branch II	Don Schwab/Fred Wurster	Air Attack Supervisor		Carl Magill/James Johnson
READ Branch I	Brian Poovey	Air Support Supervisor		Sandra Shellnut
IMET	Scott Kennedy	Helicopter Coordinator		
FOBS	Nate Perrine	Air Tanker Coordinator		
Training	Meredith Lund	<b>10. Finance Section</b>		
		Chief	Diane Taylor	
<b>8. Logistics Section</b>		Cost Unit	Bonnie Amaral / J.Lowe(t)	
Chief	Zeph Cunningham	Time Unit	Sandy Fix(t)	
Deputy	J.McPherson	Compensation/Claims Unit	Ruthi Blackman(t)	
Supply Unit	Eugene Mannelin			
Ordering Manager	T.Ladou/R.Kingston	Procurement Buying Team	Jammie Lindsay	
Facilities Unit	Terry Holsclaw(t)			
Ground Support Unit	J.Newman/R.Chapin	Prepared by (Resource Unit Leader) Peter Fischer PSC1(t)		
Communications Unit	C.Gilleland/G.Rosenthal(t)			
Medical Unit	S. Ellis / T. Willoughby (t)			
Security Unit	Teddy Mullins			

<b>Division Assignment List</b>		1. Branch <b>I</b>		2. Division/Group <b>DIV A</b>			
3. Incident Name <b>LATERAL WEST</b>		4. Operational Period 08/20/11 Saturday Day Shift 0730 - 1930					
5. Operations Personnel							
Operations Chief	DANNY BRYANT; GREG SANDERS(t)		Division/Group		JUSTIN HANLEY; 8/26		
Operations Chief			Air Attack Supervisor		C. MAGILL (8/28) / J. JOHNSON (8/24)		
Branch Director	Z.SEABRIGHT;8/22 / J.COLLETT(t);8/24		Safety Officer		BRIAN BEISEL; PAT SHERIDAN		
6. Resources Assigned this Period							
Strike Team/Task Force/ Resource Designator		Leader		Num of Pers.	Trans. Y/N	Drop Off PT./Time	Pick Up PT./Time
TFLD; 8/22		DON MIKEL		1	N		
E-32; DOZ2; GDR JD650 GX-1;		CLARK		1	N		
E-155; DOZ2; NCPOR; 8/19		MELVIN WALSTON		2	N		
E-19 ; TRAC ; GEO-BOY ALR; 8/22		JEFF SWAIN		1	N		
E-33; DOZ2;VAGDR JD; 8/18		D. TYREE		1	N		
E-69; ENG6; SCFMF SUMTER 362; 8/25		DAVID MARBERT		3	N		
E-72; ENG6; KYLBF 162; 8/25		BILL RYAN/CHAD INGIE(t)		3	N		
E-31; FLEX TRACK; GX-7; 8/18		JONATHAN POWERS		1	N		
DOZB; 8/23		LEWIS PAYNE		1	N		
DOZB(t); 8/23		CHRIS CARTER (t)		1	N		
TFLD; 8/25		TOM STRIETZEL		1	N		
TFLD (t) 8/26		BRENDA DALE		1	N		
FALLING TEAM; 8/21		TODD CAUDILL		2	N		
E-22; WT2; SNOWY RIVER; 8/25		MIKE KILBANE		1	N		
E-213 FULL TRACK GX4		AMY MIDGETT		2	N		
E121-E122; 2 UTVs				2	N		
EMTP; 8/25		MARC ERWIN BURNETTE		1	N		
EMTB; 8/21		THOMAS GRANT		1	N		
EMTP; 8/27		SHANE S KESSLER		1	N		
SOF2; 8/23		SCOTT A BELKNAP		1	N		
7. Control Operations							
<p>Hold and patrol Interior Ditch which serves as north fire line. Improve lines with GeoBoy.  Mop up and patrol spot north of Interior Ditch along with constructing and improving line.  Continue pumping to flood ditches in Div A.  Continue pump operation on NW corner of slop over north of Interior Ditch Rd.  Use Aviation resources as needed.</p>							
8. Special Instructions							
Be aware of fire activity to the south and west of Div personnel.							
9. Division/Group Communications Summary							
Function	Frequency - RX	Frequency - TX	Tone	System	Channel	System	Channel
Command	169.7875N	164.5250N	100.0		3		
Tactical	168.0500N	168.0500N			1		
Air Guard	168.625	168.625	110.9		14 or 16		
Air to Ground	169.200	169.200			13 or 5		
Prepared by (Resource Unit Leader) K.CHADWICK/P.FISCHER			Approved by (Planning Section Chief) JANAN HAY SHARP		Date Prepared 08/19/11		Time Prepared 0800

<b>Division Assignment List</b>		1. Branch <b>I</b>		2. Division/Group <b>DIV D</b>			
3. Incident Name <b>LATERAL WEST</b>		4. Operational Period 08/20/11 Saturday Day Shift 0730 - 1930					
<b>5. Operations Personnel</b>							
Operations Chief	DANNY BRYANT; GREG SANDERS(t)		Division/Group		ROBERT WOOD(8/20); MICHAEL BOT(t)		
Operations Chief			Air Attack Supervisor		C. MAGILL/J. JOHNSON		
Branch Director	ZEKE SEABRIGHT/J.COLLETT(t)		Safety Officer		BRIAN BEISEL; PAT SHERIDAN		
<b>6. Resources Assigned this Period</b>							
Strike Team/Task Force/ Resource Designator		Leader		Num of Pers.	Trans. Y/N	Drop Off PT./Time	Pick Up PT./Time
TFLD; 8/30		PHIL MILLETTE		1	N		
E-15;ENG6;NATIONAL #5;8/23		JEREMIAH CATES		3	N		
E-11; ENG6; ENGINE FSP - 11; 8/23		GREGG KNEIPP		3	N		
E-20; WAT1; BUSH TENDER #1; 8/31		DALE GAY		1	N		
TFLD; 8/25		KRIS LARSON		1	N		
E-10; ENG6; NERI ENGINE 840; 8/23		THOMAS E POORE		3	N		
C-2; T2IA PATRICK; 8/22		DEBORAH BLAIS		20	N		
E-151;ENG6;ENGINE - T6 - NJ -WKR #2;8/27		BRETT GORE		1	N		
TFLD; 8/30		BRIAN DELASANTOS		1	N		
E-63; TPL2; OSCEOLA #3; 8/26		TIMOTHY LANTERMAN		2	N		
E-75; TPL2; LAKE GEORGE #1; 8/26		BRADLEY WHITTINGTON		2	N	OUT OF SERVICE	
E-77; ST TSP2; NCNCS D13; 8/25		KIM ARRINGTON		5	N		
DOZB; 8/23		JACKIE WOODEN		1	N		
E-110; MISC; BOOMAX; 8/29		VANCE JONES		1	N		
E-111; BHOE; GEOBOY; 8/26		CHRIS DIXON		1	N		
SOF2; 8/23		SCOTT BELKNAP		1	N		
EMTP; 8/25		MARC BURNETTE		1	N		
EMTB ; 8/21		TOM GRANT		1	N		
EMTP; 8/27		SHANE KESSLER		1	N		
<b>7. Control Operations</b>							
<p>Improve fire line between Corapeake and South Ditch  Fire along West Ditch between DP2 and DP3 as needed.  Excavator will be used to clean ditch between DP2 and DP3.  Remove downed trees from South Ditch Road and Riddick Road when resources become available.  Use aviation resources as needed.</p>							
<b>8. Special Instructions</b>							
Be aware of fire activity to the north and east of DIV personnel.							
<b>9. Division/Group Communications Summary</b>							
Function	Frequency - RX	Frequency - TX	Tone	System	Channel	System	Channel
Command	169.7875N	164.5250N	100.0		3		
Tactical	168.0500N	168.0500N			2		
Air Guard	168.625	168.625	110.9		14 and 16		
Air to Ground	169.200	169.200			13 or 15		
Prepared by (Resource Unit Leader) K.CHADWICK/P.FISCHER		Approved by (Planning Section Chief) JANAN HAY SHARP			Date Prepared 08/19/11		Time Prepared 0800



<b>Division Assignment List</b>		1. Branch <b>II</b>		2. Division/Group <b>B</b>			
3. Incident Name <b>LATERAL WEST</b>		4. Operational Period 08/20/11 Saturday Day Shift 0730 - 1930					
5. Operations Personnel							
Operations Chief	DANNY BRYANT; GREG SANDERS(t)		Division/Group Sup		MIKE REED (8/26)		
Operations Chief			Air Attack Supervisor		C. MAGILL/J. JOHNSON		
Branch Director	PATRICK PEARSON; J.KOENIG(t) 8/22;		Safety Officer		BRIAN BEISEL; PAT SHERIDAN		
6. Resources Assigned this Period							
Strike Team/Task Force/ Resource Designator	Leader	Num of Pers.	Trans. Y/N	Drop Off PT./Time	Pick Up PT./Time		
TFLD; 8/23	BILL EDWARDS	1	N				
E-5; ENG6; OHWAF 10; 8/22	DANIEL ANERINO	3	N				
FALLING TEAM	DAVID GOOD	2	N				
TFLD; 8/24	SCOTT POSNER	1	N				
E-65; ENG6; MILES 1; 8/25	GENE MATSON	3	N				
E-67; ENG6; PATRICK #95; 8/25	PAUL RAMPINI	3	N				
E87, BOOMAX; NC GDSP	CARLTON GRIFFIN	1	N				
E88, BUSHBOY; NC GDSP	MATHIAS/CARVER	2	N				
STEN; 8/29	TROY BOSCHEE	1	N				
E-66;ENG6;BUSH FIRE SVCS E	PHILLIP QUOCHYTEWA	2	N				
E-68;ENG6;MDBWRD BLACKW302;8/25	PAUL ROGER STONE	2	N				
E-7;ENG6;ACADIA ENGINE;8/24	EDWARD PONTBRIAND	3	N				
E-23;WAT2;TACTICAL;8/26	TRAVIS PAULTON	1	N				
E-26;WAT3;SMOKY MTN FIRE	LARRY BARTLETT	1	N				
E-105; EXCA; LIGHTWOODKNOT; 8/26	MIKE PUTMAN	1	N				
E-106; TPL6; DISC MOWER; 8/26	JAY EAKES	1	N				
EMTP; 8/24	KURT GAINER	1	N				
EMTB; 8/25	CHRISTOPHER SACHS	1	N				
SOF2; 8/26	DOUGLAS MIEDTKE	1	N				
7. Control Operations							
<p>Prepare Feeder and Laurel Ditches as holding lines by mowing and brushing.          Begin plans to install water handling system.          Continue prep around Gaugin Station.          Mop up on Corapeake Road.          Use Aviation resources as needed.</p>							
8. Special Instructions							
<p>A waterway escape route is in place in Div B. Two john boats and 1 canoe with paddles are staged on the bank of Feeder Ditch jut north of DP 10 along with flotation devices. Travel back and forth across the Feeder Ditch until all are transported to the north bank. Proceed on foot east and north on the farm road to the bridge across intercoastal waterway to State Route 17 for pick up.</p>							
9. Division/Group Communications Summary							
Function	Frequency - RX	Frequency - TX	Tone	System	Channel	System	Channel
Command	169.7875N	164.5250N	100.0		3		
Tactical	168.6000N	168.6000N			5		
Air to Guard	168.625	168.625	110.9		14 and 16		
Air to Ground	169.200	169.200			13 and 15		
Prepared by (Resource Unit Leader) K.CHADWICK/P.FISCHER		Approved by (Planning Section Chief) JANAN HAY SHARP		Date Prepared 08/19/11		Time Prepared 0800	

<b>Division Assignment List</b>		1. Branch <b>II</b>		2. Division/Group <b>C</b>			
3. Incident Name <b>LATERAL WEST</b>		4. Operational Period 08/20/11 Saturday Day Shift 0730 - 1930					
5. Operations Personnel							
Operations Chief	DANNY BRYANT; GREG SANDERS(t)		Division/Group		STEVE SMESTEAD (8/21)		
Operations Chief			Air Attack Supervisor		C. MAGILL/J. JOHNSON		
Branch Director	PATRICK PEARSON; J.KOENIG(t)		Safety Officer		BRIAN BIESEL; PAT SHERIDAN		
6. Resources Assigned this Period							
Strike Team/Task Force/ Resource Designator		Leader	Num of Pers.	Trans. Y/N	Drop Off PT./Time	Pick Up PT./Time	
TFLD; 8/29		NATE OSBURN	1	N			
E-89; EQUIPMENT TENDER; NC		SIGNA WILLIAMS	1	N			
E-159; BOMBARDIER MDBWR		EPHRAIM DIEFENDERFER	2	N			
E-62; TRAC; FIRE CAT; 8/25		JOHN BECK	2	N			
E-71; ENG6; MIOTF 62; 8/26		ROBERT GARRISON JR	3	N			
E-74; ENG6; LPR #6331; 8/26		BEN HALVERSON	3	N			
C-3; T2IA; DELAWARE STATE; 8/25		BURKENTINE/GLADDERS(t)	20	N			
EMTP; 8/25		DEAN CARPENTER	1	N			
EMTP; 8/26		DAVID MCCURRY	1	N			
EMTB; 8/28		KENNETH K KESSLER	1	N			
SOFR; 8/23		LARRY KLOCK	1	N			
SOF2(t); 8/27		TOM CREWS (t)	1	N			
7. Control Operations							
<p>Prepare Kim Saunders and Cross Canal Ditch Rds as holding lines by mowing and brushing.          Improve dozer line from Corapeake Rd to Forest Line Ditch Rd and fire out as necessary.          Continue prep along West Boundary Ditch.          Begin plans to install water handling system.          Patrol Corapeake Ditch Rd for ground fire burning into road bank.          Use Aviation resources as needed.</p>							
8. Special Instructions							
<p>Be aware of fire progression to the north and east of Div. personnel.          Escape Route (Intercoastal Bridge): 45,000 lb limit. Ensure even load. Cross one vehicle at a time.          Low clearance vehicles use extra caution.</p>							
9. Division/Group Communications Summary							
Function	Frequency - RX	Frequency - TX	Tone	System	Channel	System	Channel
Command	169.7875N	164.5250N	100.0		3		
Tactical	168.3500N	168.3500N			4		
Air to Guard	169.200	169.200			14 and 16		
Air to Ground	168.625	168.625	110.9		13 and 15		
Prepared by (Resource Unit Leader) K.CHADWICK/P.FISCHER		Approved by (Planning Section Chief) JANAN HAY SHARP		Date Prepared 08/19/11		Time Prepared 0800	



<b>Division Assignment List</b>			1. Branch <b>II</b>		2. Division/Group <b>Bull North</b>		
3. Incident Name <b>LATERAL WEST</b>			4. Operational Period 08/20/11 Saturday Day Shift 0730 - 1930				
5. Operations Personnel							
Operations Chief		DANNY BRYANT; G. SANDERS(t)		Division/Group		DWIGHT SNOW/MIKE RICE(t)	
Operations Chief				Air Attack Supervisor		C. MAGILL/J.JOHNSON	
Branch Director		P. PEARSON- J. KOENIG(t)		Safety Officer		BRIAN BEISEL; PAT SHERIDAN	
6. Resources Assigned this Period							
Strike Team/Task Force/ Resource Designator		Leader		Num of Pers.	Trans. Y/N	Drop Off PT./Time	Pick Up PT./Time
TFLD; 8/22		JOHN LEE (t)		1	N		
TFLD; 8/24		GARY GLINTENKAMP		1	N		
STEN		STEVE SUTTON		1	N		
E-12; ENG6; VAVAF 31; 8/22		AARON BENNINGTON		3	N		
E-6; ENG6; IN-HOF 21; 8/22		PAUL FOUNTAIN		3	N		
E-9; ENG6 ; PRINCE WILLIAM 1; 8/22		ROCKY SCHROEDER		2	N		
E-3; ENG6; PA-ALF 22; 8/22		CRAIG KOSTRZEWSKI		3	N		
E-27; WAT2; TIPTON YOUNG #1; 8/31		KEN SWAIN		1	N		
C1; CREW T1; MIDEWIN IHC; 8/23		JERRY HOFFMAN		21	N		
EMTP; 8/25		DEAN CARPENTER		1	N		
EMTP; 8/27		SHANE S KESSLER		1	N		
EMTP; 8/26		DAVID MCCURRY		1	N		
SOF2; 8/26		RON GUCK		1	N		
7. Control Operations Begin prep for water flow. Continue to hold and improve line on Bull North fire. Use aviation resources as needed							
8. Special Instructions Be aware of fire progression to the north and east of Div personnel.  Escape Route (Intercoastal Bridge): 45,000 lb limit. Ensure even load, cross one vehicle at a time. Low clearance vehicles use extra caution.							
9. Division/Group Communications Summary							
Function	Frequency - RX	Frequency - TX	Tone	System	Channel	System	Channel
Command	169.7875N	164.5250N	100.0		3		
Tactical	168.2000N	168.2000N			2		
Air Guard	168.625	168.625	110.9		14 and 16		
Air to Ground	169.200	169.200			13 and 15		
Prepared by (Resource Unit Leader) K.CHADWICK / P.FISCHER			Approved by (Planning Section Chief) Janan Hay Sharp			Date Prepared 08/19/11	Time Prepared 0800

<b>Division Assignment List</b>		1. Branch <b>II</b>		2. Division/Group <b>E</b>			
3. Incident Name <b>LATERAL WEST</b>		4. Operational Period 08/20/11 Saturday Day Shift 0730 - 1930					
5. Operations Personnel							
Operations Chief	DANNY BRYANT; GREG SANDERS(t)		Division/Group		MIKE HUNEKE (8/25)		
Operations Chief			Air Attack Supervisor		C. MAGILL/J.JOHNSON		
Branch Director	PATRICK PEARSON; J.KOENIG(t)		Safety Officer		BRIAN BEISEL; PAT SHERIDAN		
6. Resources Assigned this Period							
Strike Team/Task Force/ Resource Designator		Leader		Num of Pers.	Trans. Y/N	Drop Off PT./Time	Pick Up PT./Time
TFLD; 8/24		TRENTON GIRARD		1	N		
E-83; TPS2; D7 TPL STRIKE TEAM; 8/23		MICHAEL HUGHES		4	N		
E-84; TPS2; STRIKE TEAM NC-NCS; 8/24		ANDY HUX		7	N		
E-112; FUEL TENDER 82; 9/2		RANDY BIRD		1	N		
E-113; FUEL TENDER 8; 9/2		WOODY BARGERON		1	N		
E-226; TPL1;NC TRACTOR PLOW;9/1					N		
E-227; TPL1;FLEXTRAC SOFTTRACK;9/1					N		
E-4; ENG6; WVMOF 641;8/22		KEVIN TAYLOR		4	N	Be available for IA	
E-206; ENG6; SMF #2; 8/30		MARSHALL HALFORD		3	N	with Taylor as ICT4	
C-6; HC1; AUGUSTA HOTSHOTS; 8/31		OSCAR MONTIJO		18	N		
EMTP; 8/26		DAVID MCCURRY		1	N		
EMTB; 8/28		KENNETH K KESSLER		1	N		
EMTP; 8/25		DEAN CARPENTER		1	N		
SOF2; 8/26		RONALD GUCK		1	N		
STAM; 8/27		JIM MARETT		1	N		
7. Control Operations							
<p>Start prep of Forest Line Rd from DP8 to DP7.  Prep Cross Canal from DP7 to DP6.  Use Aviation resources as needed.</p>							
8. Special Instructions							
<p>Be aware of fire progression to the north and east of Div. personnel.</p> <p>Escape Route (Intercoastal Bridge): 45,000 lb limit. Ensure even load, cross one vehicle at a time.  Low clearance vehicles use extra caution.</p>							
9. Division/Group Communications Summary							
Function	Frequency - RX	Frequency - TX	Tone	System	Channel	System	Channel
Command	168.3500N	168.3500N			3		
Tactical	168.0500N	168.0500N			1		
Air to Guard	168.625	168.625	110.9		14 and 16		
Air to Ground	169.200	169.200			13 and 15		
Prepared by (Resource Unit Leader) K.CHADWICK/P.FISCHER		Approved by (Planning Section Chief) JANAN HAY SHARP			Date Prepared 08/19/11		Time Prepared 0800



<b>Division Assignment List</b>		1. Branch <b>II</b>		2. Division/Group <b>Water Handling Group</b>			
3. Incident Name <b>LATERAL WEST</b>		4. Operational Period 08/20/11 Saturday Day Shift 0730 - 1930					
5. Operations Personnel							
Operations Chief	DANNY BRYANT; GREG SANDERS(t)		Division/Group	AARON GAY			
Operations Chief			Air Attack Supervisor	C. MAGILL/J. JOHNSON			
Branch Director			Safety Officer	BRIAN BEISEL; PAT SHERIDAN			
6. Resources Assigned this Period							
Strike Team/Task Force/ Resource Designator	Leader	Num of Pers.	Trans. Y/N	Drop Off PT./Time	Pick Up PT./Time		
TFLD; 8/30	SHAWN NAGLE	1	N				
E-58; ENG6; NC ENG 745; 8/23	AARON L GAY	2	N				
E-57; ENG6; NC ENG 780; 8/23	CHARLES DAVIS	2	N				
E-56; ENG6; NC ENG 722; 8/23	MIKE HOGGARD	2	N				
E-154; WT T1 6000 gal	RICKY BALLANCE	1	N				
TFLD; 8/29	STEVE D'AMBRA	1	N				
DOZB; 8/25	JONATHON F KNAPPER	1	N				
E-117; EXCA; RIVERSIDE EXCAVATION;8/27	ERIC CLAYTON	1	N				
E-118; EXCA; ARMSTRONG; 8/27	CHARLES SEARS	1	N				
E-114; EXCA; J & M EXCAVATION	E.MURPHY	1	N				
E-150; DOZ2; DOZER; 9/6	CLEO SIMON	1	N				
E-212; FRONT END LOADER	MELVIN OWENS	1	N				
E-115; EXCA; J & M EXCAVATION;	SAM STORY	1	N				
E-107; TPL6; BOOMAX; 8/26	VANCE JONES	1	N				
E-108; TPL6; DISC MOWER;8/26	DONNY SHELTON	1	N				
E-109; MISC; DISC MOWER;8/26	TERRY MCCALL	1	N				
7. Control Operations Prep canal ditches and install pumping equipment							
8. Special Instructions Coordinate with Branch Director and DIVS when working in their area of responsibility. WT staged @ Corapeake Rd to fill tenders.							
9. Division/Group Communications Summary							
Function	Frequency - RX	Frequency - TX	Tone	System	Channel	System	Channel
Command	169.7875N	164.5250N	100.0		3		
Tactical	169.9000N	169.9000N			7		
Water Rept.	168.0750N	170.4250N			6		
Air to Ground	169.200	169.200					
Prepared by (Resource Unit Leader) K.CHADWICK/P.FISCHER			Approved by (Planning Section Chief) Janan Hay Sharp		Date Prepared 08/19/11	Time Prepared 1702	



Incident Radio Communications Plan		1. Incident Name: Lateral West		2. Date/Time Prepared: 08/19/2011 1430 hrs		3. Operational Period (Date/Time) 08/20/2011 0730-1930, Night 1930-2400, 0001-0730	
4. Basic Radio Channel Utilization							
System/Cache	Channel	Function	Frequency/Tone	Assignment	Remarks		
	CH 1	TAC 1	RX 168.050 Narrow Analog TX 168.050	Div A/F/5			
	CH 2	TAC 2	RX 168.2 Narrow Analog TX 168.2	Div D/Bull North			
	CH 3	CMD 3	RX 169.7875 Narrow Analog TX 164.525 Tone 100.0	Command Repeater			
	CH 4	TAC 4	RX /RX 168.350 Narrow Analog	DIV C			
	CH 5	TAC 5	RX 168.600 Narrow Analog TX 168.600	DIV B			
	CH 6	CMD 6	RX 168.075 Narrow Analog TX 170.425	Water Handling Repeater			
	CH 7	TAC 7	RX/TX 169.900 NARROW ANALOG	FIRING/WATER HANDLING			
	CH 8	VA DOF	RX /TX 172.275 Narrow Analog		Coordination with Virginia DOF units		
	CH 9	SE COMP	TX/RX 159.285 ANALOG WIDE	COORDINATION WITH NC			
	CH 10	NC A-G	TX/RX 171.575 TONE 131.8				
	CH 11	NC TAC	RX /RX 151.4 Analog Narrow TONE 136.5				
	CH 12	BLANK			South		
	Ch 13	AIR TO GROUND	RX/TX 169.200				
	CH 14	AIR GUARD	RX /TX 168.625 TONE 110.9	EMERGENCY CONTACT WITH AIRCRAFT			
AIR TO GROUND	CH 15	AIR TO GROUND	RX/TX 169.200				
AIR GUARD	Ch 16	Air Guard	RX/TX 168.625 TX Tone 110.9	Emergency contact with Aircraft			
Communications		Comm Unit	678-316-4615	Claude Gilleland			
ICS 205	5. Prepared By (Communications Unit Leader): Claude Gilleland						

<b>MEDICAL PLAN</b>	1. Incident Name <b>Lateral West Complex</b>	2. Date Prepared <b>8/17/2011</b>	3. Time Prepared <b>1500</b>	4. Operational Period <b>8/19/2011</b> <b>DAY /NIGHT SHIFT</b>	
5. Incident Medical Aid Station					
<b>Medical Aid Stations</b>	<b>Location</b>			<b>Paramedics</b> Yes No	
<b>Medical Unit (ICP) 404-354-5799</b>	<b>Lateral West Complex ICP</b> <b>Shanna Ellis MEDL</b> <b>Tammy Willoughby MEDL (T)</b>			<b>X</b>	
<b>Medical Personnel</b>	<b>Day Shift:</b> DIV A/D: EMTP Marc Burnette/EMTB Tom Grant/EMTP Shane Kessler DIV B: EMTP Kurt Gainer/EMTB Chris Sachs DIV C/E/Bull North: EMTP Dean Carpenter/EMTP David McCurry/EMTB Kenneth Kessler  <b>Suffolk Fire &amp; EMS Ambulance</b>  <b>Night Shift: Suffolk Fire and EMS 911 Service</b> <b>Darian Stevens EMTB</b>			<b>X</b>          <b>X</b>	
Ambulance Services					
<b>Name</b>	<b>Address</b>	<b>Phone</b>	<b>Paramedics</b> Yes No		
<b>Suffolk Fire &amp;EMS</b>	<b>300 Kings Fork Rd. Suffolk, VA 23434</b>	<b>911</b>	<b>Yes</b>		
<b>Nansemond-Suffolk Rescue Squad</b>	<b>Market Street, Suffolk, VA</b>	<b>911</b>	<b>Yes</b>		
Air Ambulance Service					
<b>Nightengale Air Ambulance</b>	<b>Sentara Norfolk General</b>	<b>911</b>	<b>Yes</b>		
7. Hospitals					
<b>Name</b>	<b>Address</b>	<b>Travel Time</b> Air Ground	<b>Phone</b>	<b>Helipad</b> Yes No	<b>Burn Center</b> Yes No
<b>Sentara Obici</b>	<b>2800 Godwin Blvd, Suffolk</b>	<b>15 min</b> <b>40 min</b>	<b>757-934-4000</b>	<b>Yes</b>	<b>No</b>
<b>Sentara Norfolk General</b>	<b>600 Gresham Dr. Norfolk (Level 1 Trauma and Burn Center)</b>	<b>20 min</b> <b>85 min</b>	<b>757-388-3000</b>	<b>Yes</b>	<b>Yes</b>
8. Medical Emergency Procedures					
<ol style="list-style-type: none"> <li><b>Report all injuries/illnesses to Division Supervisors (or designee) who will assume command and notify Division Medical Personnel and Line Safety Officer.</b></li> <li><b>Medical personnel will provide medical care &amp; stabilize patient.</b></li> <li><b>Division Supervisors will notify Communications with size-up of injury/illness and exact location. <u>Do not use the injured person's name on the radio.</u></b></li> <li><b>Communications will notify MEDL and the Safety Officer to assist and to advise for further care as needed. SOF1 and MEDL will coordinate with Communications to contact ambulance or other care. Any air resources will be coordinated through local EMS/911.</b></li> <li><b>Communications network will be clear of all traffic until the medical emergency is finished.</b></li> </ol> <p><b>Request that FFTR/Engine crews or single resources let MEDL know if they have any EMTs or Paramedics and if they have equipment with them.</b></p>			<b>Helispots -</b>  <b>H1 Dismal Swamp Helibase -</b> <b>LAT 36 36 54/LONG 76 33 14</b>  <b>H2 Suffolk Municipal Airport (SFQ 122.7) -</b> <b>LAT 36 40 39/LONG 76 36 16</b>  <b>*ALTERNATE LANDING SITE MAY BE ESTABLISHED BY LOCAL FIRE RESCUE OR ON-SCENE PERSONNEL.</b>  <b>USCG Heli-Rescue – Elizabeth City, NC</b> <b>757-668-5555 (To be used by medical or air operations ONLY).</b>		
Prepared by (Medical Unit Leader) Shanna Ellis, MEDL			10. Reviewed by (Safety Officer) <b>Brian Beisel SOF1</b>		

<b>AIR OPERATIONS SUMMARY</b>		PREPARED BY: Terry Harris				PREPARED DATE/TIME: 8/19/2011 1700							
<b>1. INCIDENT NAME: LATERAL WEST</b>		<b>2. OPERATIONAL PERIOD DATE:</b> 8/20/2011		START TIME: 0800		END TIME: 2100		SUNRISE: 6:27 AM		SUNSET 1951			
<b>3. REMARKS</b> (Safety Notes, Hazards, Air Operations Special Equipment, etc.) -PILOTS-WATCH FOR BIRDS AND OTHER AIRCRAFT -BE ALERT FOR HIGH WINDS AND TURBULANCE -NOTE THAT SOME TOWERS ARE NOT MARKED ON SECTIONAL MAPS. TOWERS COULD BE UP TO 2500 FEET TALL -ALL FIREFIGHTING AIRCRAFT NEED TO SQUAWK 1255. FLY WITH LIGHTS ON. -HEADS UP WHEN PERFORMING WATER DROPS AROUND CREWS ON THE GROUND -MAINAIN CLEAR COMMUNICATIONS -CREWS STAY AWAY FROM WATER DROPS INCLUDING APPROACH AND DEPARTURES -AIRCRAFT WILL BE ORDERED AND DISPATCHED UTILIZING LATITUDE AND LONGITUDE-DEGREES DECIMAL MINUTES -AIRCRAFT PRIORITIES 1. PUBLIC AND FIREFIGHTER SAFETY 2.PROTECTION OF PROERTY AND RESOURCES 3. INITIAL ATTACK 4.POTENTIAL PROBLEM FIRES 5. UNSTAFFED FIRES 6. IF FILING A SAFECOM NOTIFY AIR OPERATIONS BRANCH						<b>4. MEDEVAC A/C:</b> 911 Nightingale		<b>5. TFR: FDC 1/0543 Polygon 2000' MSL</b> 1. IMMEDIATE NOTIFICATION OF INTRUSIONS ARE TO BE PLACED WITH THE FAA.					
<b>6. PERSONNEL</b>		Phone		<b>7. FREQUENCIES</b>		AM		FM		<b>8. FIXED WING</b> # Available/ Type/ Make-Model/FAA N# / Bases			
AOBD: Terry Harris		240-863-1038		AIR/AIR PRIMARY		122.925				AIRTANKERS/LEAD/ASM			
		936-366-4239		AIR/AIR SECONDARY		122.575							
ASGS: Sandra Shellnut Local Aviation Contact: Kyle Krzywicki		970-426-1711 757-617-4970		NATIONAL FLIGHT FOLLOWING (NARROW BAND)									
ATGS: James Johnson ATGS (t): 252-475-8012 ATGS Aircraft: N1353L A-6		307-259-0902		AIR/GROUND PRIMARY AIR/GROUND SECONDARY				169.200N 171.575 Tone 131.8					
ATGS: Carl McGill ATGS Aircraft: N5078E A-15 Suffolk		541-519-0850											
HEB2: John Bragg		423-483-2798		COMMAND: (Simplex)						VIRGINIA INTERAGENCY COORDINATION CENTER Direct: 540-265-5220 or 540-265-5160 EXT. 221 FAX: 540-265-5225			
ACDP: Richard Schmid		541-499-1600		COMMAND RPT SEE ICS 205		Rx: Tx:				Region One North Carolina FS Ops Room: Jim Slye 252-520-2402 ext. 227; cell 252-560-5467 FAX: 252-520-4940 Fish & Wildlife FMO Office – 757-986-3480			
				DECK FREQ:				168.7125		1. Helibase: Suffolk Airport Lat 36 40 39 Long 76 36 16 2. Helispots:H -1 Dismal Swamp Helibase Lat. 36 36 54 Long 76 33 14			
				TOLC:									
<b>9. HELICOPTERS</b> (Use Additional Sheets As Necessary)													
FAA N#	TY	MAKE/MODEL	BASE	AVAIL	START	REMARKS	FAA N#	TY	MAKE/MODEL	BASE	AVAIL	START	REMARKS
N21HX A-2	3	BELL 407		0830	0730	Ron Nixon 540-392-5569	HT-745 N957AC A-7	1	Sikorsky S-64		0830	0800	Bruce Dissel 970-759-5514 970-948-7674
N209CP	3	BELL L-4				Michael Hurst 678-622-6308	N699RH A-1	1	K-1200		0830	0800	Al Driesbach 805-479-1837



# DEMOBs August 20 - 22

The resources listed below are scheduled to time out soon. The dates listed are the last operational period for Lateral West resources. Please review the list carefully. If you believe your final shift date should occur between August 20 and 22 and you are not on this list, please call Demob at 757-986-2146.

Supervisors should submit general messages to demob specifying the date/time that each resource is available for release. Flights take time to arrange so supervisors should provide release dates/times at least two days prior to release. General messages should specify if ground support is needed to the airport.

Supervisors must submit Extension Requests via extension request forms to Demob prior to the demob date for each resource to be extended. Extension forms are available in the Check In/Demob Trailer. Forms need to be signed by the appropriate Section Chiefs and the resource to be extended. The authorization process takes time to complete so the earlier Demob receives an extension request the better.

**IF YOU NEED A FLIGHT HOME:** In order to arrange flights, dispatch needs the date of birth for each passenger. If you need a flight home and do not recall providing a date of birth at check-in, please call demob at 757-986-2146.

Resource	Name	Trvl Method	Kind	Last Operational Period
O-16	CHUMBLEY, MATTHEW	AOV	HECM	08/20/11
O-36.7	WOOD, ROBERT	AOV	DIVS	08/20/11
O-158	CARVER, ADAM EMERSON	AOV	THSP	08/21/11
O-18	SMESTAD, STEVE	AOV	DIVS	08/21/11
O-21	GRANT, THOMAS	AOV	EMTB	08/21/11
O-22	KIRK, WILLIAM	AOV	FALB	08/21/11
O-23	BRADSHAW, MICHAEL	AOV	FALC	08/21/11
O-24	GOOD, DAVE	AOV	FALB	08/21/11
O-25	CAUDILL, TODD	AOV	FALB	08/21/11
O-7	CRAIN, JOHN	AIR	LSC2	08/21/11
C-1	MIDEWIN IHC	AOV	HC1	08/22/11
C-2	T2IA PATRICK	POV	HC2	08/22/11
E-12	ENGINE 31	AOV	ENG6	08/22/11
E-19	GEO-BOY	AOV	TRAC	08/22/11
E-3	PA-ALF 622	AOV	ENG6	08/22/11
E-4	WVMOF 641	AOV	ENG6	08/22/11
E-5	OHWAF 10	AOV	ENG6	08/22/11
E-6	IN-HOF E-21	AOV	ENG6	08/22/11
O-10	THOMPSON, DEANNA	POV	THSP	08/22/11
O-2	KOENIG, WILLIAM	AOV	ICT3	08/22/11
O-30	HERRING, GORDON	A/R	SPUL	08/22/11
O-33	DURFEE, MICHAEL G.	AOV	PSC2	08/22/11
O-43	TYREE, DONNIE	POV	TPIA	08/22/11
O-49	SWAIN, JEFF	AOV	TPOP	08/22/11

**CTR CHALLENGED LIST**

**PLEASE SEE TIME**

If you have put “H=Hazard or E=Environmental Pay” on your previous CTR’s please come and see time. This is not sufficient justification for hazard. Please be more specific. Ex – Uncontrolled fire

O-68 GLINTENKAMP

O-61 LOVAN

E-205 MIDGETT & POWERS

O-82 STEVENS

**PLEASE SEE EQUIPMENT TIME**

E-15

E-83.3

E-83.5

E-114

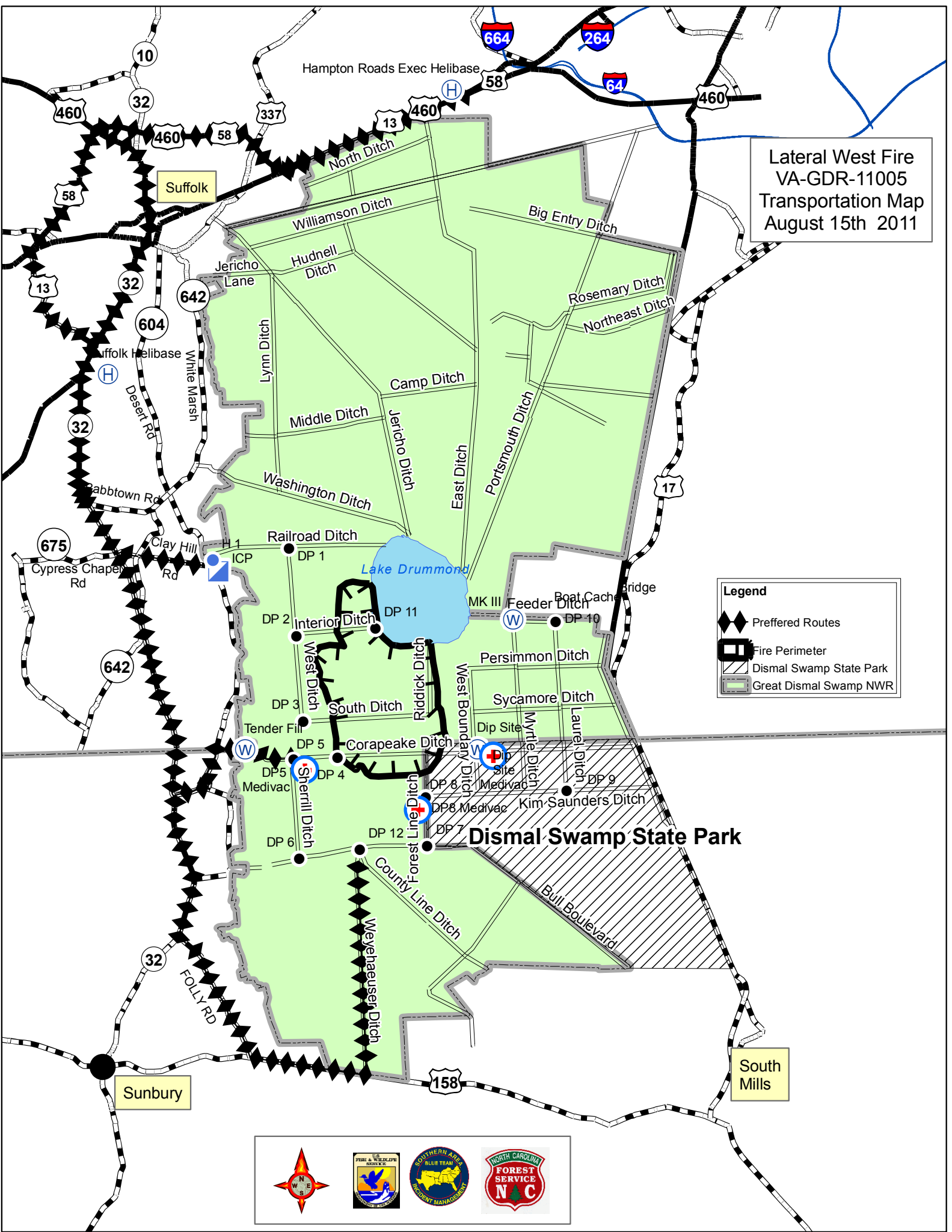
E-115

E-125

E-212

STEVE SUTTON

Lateral West Fire  
 VA-GDR-11005  
 Transportation Map  
 August 15th 2011



**Legend**

- Preferred Routes
- Fire Perimeter
- Dismal Swamp State Park
- Great Dismal Swamp NWR





# IAP Map

## Lateral West Fire Great Dismal Swamp

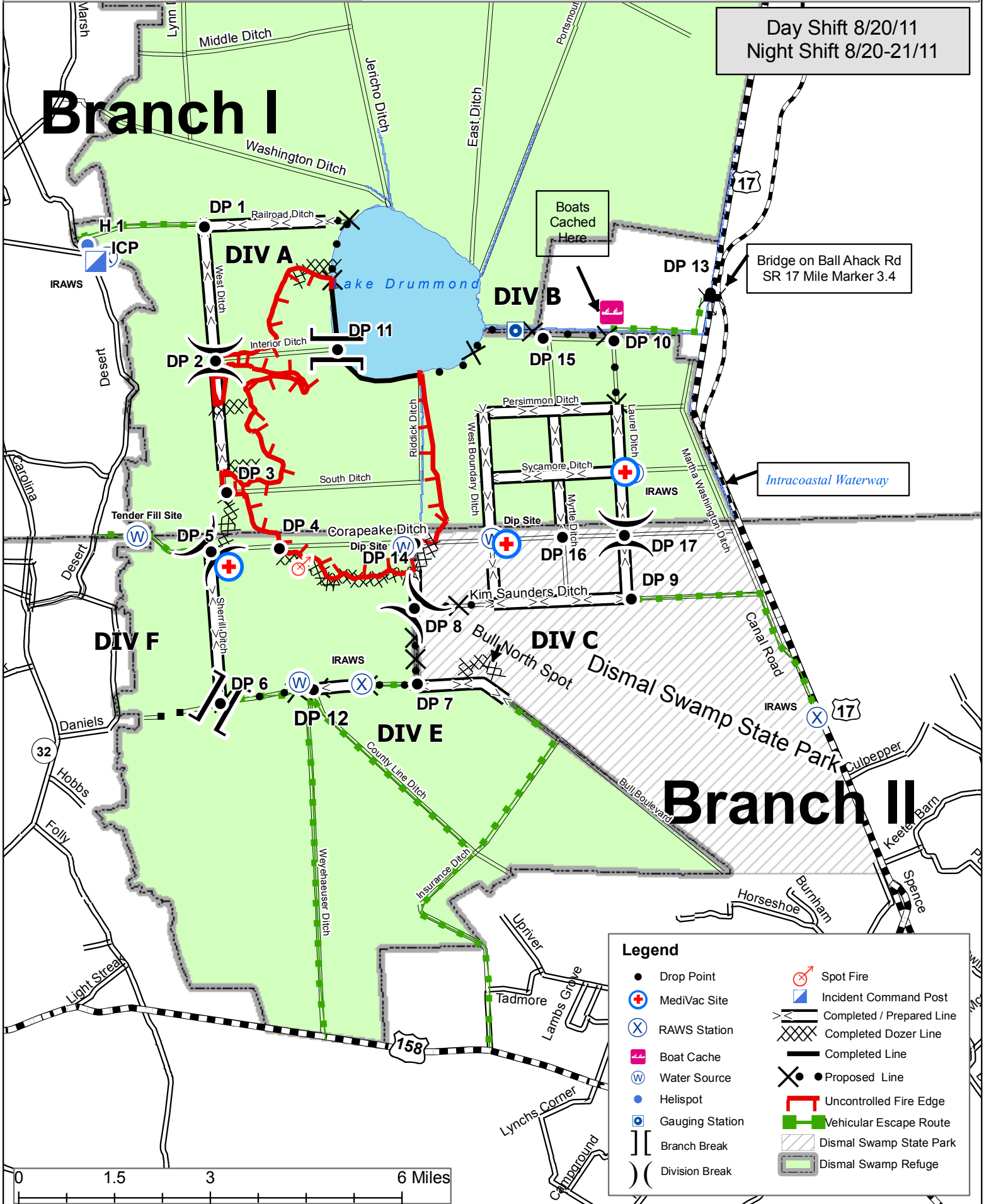


VA-GDR-011005 6,071 Acres as of  
PRF9FY 2100hrs 8/16/2011

Day Shift 8/20/11  
Night Shift 8/20-21/11

# Branch I

# Branch II



Legend			
●	Drop Point	⊗	Spot Fire
⊕	MediVac Site	Ⓜ	Incident Command Post
⊗	RAWS Station	—	Completed / Prepared Line
Ⓜ	Boat Cache	⊗	Completed Dozer Line
Ⓜ	Water Source	—	Completed Line
●	Helispot	⊗	Proposed Line
Ⓜ	Gauging Station	Ⓜ	Uncontrolled Fire Edge
Ⓜ	Branch Break	Ⓜ	Vehicular Escape Route
Ⓜ	Division Break	Ⓜ	Dismal Swamp State Park
		Ⓜ	Dismal Swamp Refuge



**SAFETY MESSAGE**

Brian Biesel/Pat Sheridan – Safety Officers

Lateral West Fire Great Dismal Swamp, Fish and Wildlife Service

08/20-21/2011

**Road Congestion** – Drop points, Intersections and Parking Areas are still areas of high concern for accidents. There is a lot of traffic on Corapeak Ditch and West Ditch road as they are the main arteries into the fire. Slow to **5 MPH** when going past personnel or equipment on the roads in the Refuge. You never know when someone may step out from behind equipment. This kind of accident is preventable if you are focused on driving and not thinking about what you need to do when you arrive at your destination.

**Road Shoulders** – With the water rising in the ditches the road shoulders could become soft. Park on the opposite side of the road from the ditches if possible.

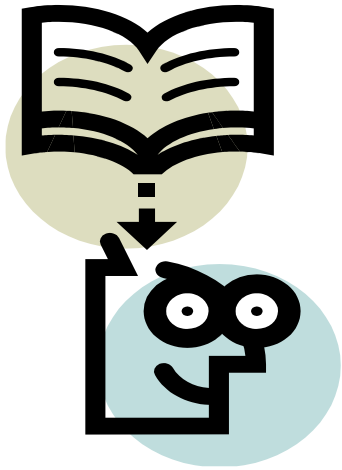
**Fire Behavior** – It is becoming hotter and drier. Fire activity is picking up as the days since last rain grows longer. This is a watch out situation that deserves our attention. There is a lot of heat as the organic soil is being consumed. Spotting has occurred and will continue to be something we must all watch closely. We don't want to lose any of the good work already completed. A change in wind direction is predicted for Sunday or Monday. We want to be ready for this to push the fire on the south end, a critical area we want to hold.

**Personal Hygiene** - Viruses spread easily upon contact. Wash hands thoroughly with soap and water or use hand sanitizer after all bathroom trips. Avoid contact with anyone who is sick. Remember that hands are used constantly so make every effort to keep them clean. Keep your coolers clean and put a cap full of bleach in daily. in daily.

 **TRAINING**

Meredith Lund Training Specialist

Lateral West Fire Great Dismal Swamp, Fish and Wildlife

*TRAINING MESSAGE*

Trainees (and trainers), with all the changes coming up, please don't forget to check in with the Incident Training Specialist; it will only take a few minutes to make sure that you get credit for the skills that you accomplished. 😊

***When a man becomes a firefighter, his greatest act of bravery has been accomplished. What he does after that is all in the line of work.***

~**Edward F. Croker**

BE SAFE . . . . I HOPE TO SEE YOU SOON!

*Meredith Lund*

TNSP

Date Branch/Division Print Name/Title

**WEATHER FORECAST** (Issued 08/19/11 1900) **Scott Kennedy - Incident Meteorologist**  
Lateral West Fire Great Dismal Swamp, Fish and Wildlife Service **Forecast #12 08/20-21/2011**

**WEATHER DISCUSSION:**  
A weak disturbance will move east of the region today. A cold front will approach the area Sunday and move through Sunday Night. High pressure will build into the area Monday and Tuesday and move off the Mid Atlantic coast Wednesday.

**WEATHER FORECAST DAY (Night):**  
**GENERAL:** Partly Cloudy with a 20% of showers and thunderstorms in the afternoon. *(Partly Cloudy with a 20% chance of showers and thunderstorms in the evening).*  
**TEMPERATURES:** 90°-93° *(69° -72°)*  
**HUMIDITY:** Minimum 40%-45% *(Maximum 90%-100%)*  
**20 FT WINDS:** SSE 4-7 mph, becoming SE 5-10G15 mph in the afternoon. *(SSE 4-7 mph, becoming SW after midnight)*  
**STABILITY/INVERSION:** Mixing height to 6000 ft agl around 1400. *(Inversion to to 250 ft by 2100)*  
**DISPERSION INDEX:** 25, Fair. *(9, Poor)*  
**TRANSPORT WINDS:** S 8 mph, becoming SE 12 mph in the afternoon. *(SSE 12 mph, becoming S 5 mph after midnight)*  
**LIGHTNING ACTIVITY LEVEL:** 2 *(2)*

**OUTLOOK FOR SUNDAY:**  
Partly cloudy with a 40% chance of showers and thunderstorms, mainly during the evening. Minimum temperature around 71 degrees. Maximum temperature around 93 degrees. Minimum humidity 42-47%. Winds SW 7-14G25 mph. Dispersion 80, good.

**EXTENDED FORECAST:**  
**Monday:** Partly cloudy with a 20% chance of showers and thunderstorms, mainly in the afternoon. Minimum temperature around 72 degrees. Maximum temperature around 90 degrees. Minimum humidity 38-43%. Winds NW 4-7 mph, becoming NE 5-10G15 mph.  
**Tuesday:** Partly Cloudy. Minimum temperature around 70 degrees. Maximum temperature around 87 degrees. Minimum humidity 45-50%. Winds NE 4-7 mph, increasing to 5-10G15 mph in the afternoon.  
**Wednesday:** Mostly Sunny. Minimum temperature around 68 degrees. Maximum temperature around 89 degrees. Minimum humidity 43-48%. Winds E 4-7, becoming SE 5-10G15 mph in the afternoon.

**FIRE BEHAVIOR** (Issued 08/19/11 19:00) **Michael Durfee - FBAN**  
Lateral West Fire Great Dismal Swamp, Fish and Wildlife Service **Forecast #12 08/20-21/2011**

**Fire Behavior Discussion - ALL DIVISIONS**  
The Heavy fuels are beginning to heat up and burn. Watch for spotting if the heavy fuels begin to burn. The fire is continuing to burn down into the ground and slowly in the surface fuels. Although the movement is slow on the surface the fire is burning deep. Watch for possible increased intensity in all fuel types and especially if the fire advances into any of the cut over or blow down units.

**Low Brush/Regeneration/ Slash** (Models 4,6,12) – ROS: < 40 chains / hr FL: 8-11 feet Spotting Distance 0.1 miles POI 70% (DIV - ALL)

**Hardwood with Understory** (Model 10) – ROS: < 1/2/ to 1 chain / hr FL: < 2 feet Spotting Distance 0.1 miles POI 70% (DIV ALL)

**Southern Rough (Brush with Overstory)** (Model SH9) – ROS: 30-40 chains / hr FL: 12-16 feet Spotting Distance 0.1 miles POI 70% (DIV B, C, Bull North)

**Keep informed on fire weather conditions and forecasts.**  
**Know what your fire is doing at all times.**  
**Base all actions on current and expected behavior of the fire.**

