

Collector for ArcGIS

Quick reference

Viewing: [Android](#) | [iOS](#)

Extend the reach of ArcGIS to your field work force and use Collector for ArcGIS to improve the accuracy and currency of your spatial data. Using your ArcGIS organizational account, you can create and configure maps that tailor Collector for ArcGIS to fit your workflow needs.

The main parts of the app are as follows:

- [Map](#)
- [Map Gallery](#)
- [Menu](#)

Tip:

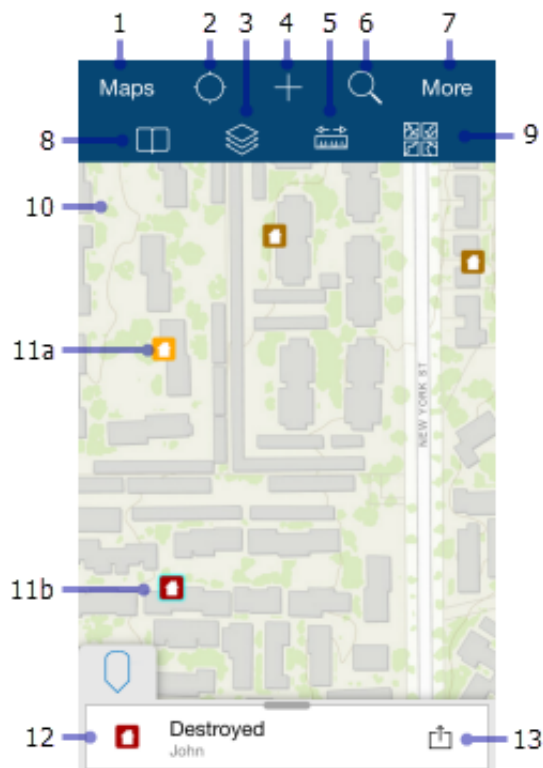
While this topic presents an overview of the main app screens, you should focus on the collection workflow the app facilitates. For data collection, see [Collect data](#). To work with your data, see [Create and share a map for data collection](#). To record routes of collectors using the app, see [Track where collectors went](#).

Map

The majority of your time in the app is spent interacting with the map, where a basemap and features display. This is the active open map and is the map used in your data collection. When viewing the map, you can collect data, get directions, begin measuring, and initiate all the other capabilities of the app. Use the [Map Gallery](#) to open a map.

Note:

The app opens to the most recently viewed map if there is one; otherwise, it opens to the [Map Gallery](#).


**Note:**


The map has a measure mode that is used to measure distances and areas on the map. In that mode, the available tools, as well as the behavior of the map, are different. While viewing an open map, tapping the map highlights features and presents information about them. In measure mode, tapping the map adds vertices and updates the measurement.


The following are highlighted in the previous image of the map:

1. **Maps**—Goes to the [Map Gallery](#).

2. **My Location** tool—Uses your device's GPS to show your location on the map. The icon changes to

show the state of the GPS. In the screen capture, the icon  indicates your location does not display

on the map. Once your location is turned on, the icon  indicates your location displays on the map and is kept centered. As you move, the map moves on the screen to keep your location centered on the

screen. Once you pan the map while your location displays, the icon  indicates your location displays on the map but isn't kept centered. As you move, your location displayed on the map moves on the screen and can even move outside the visible part of the map.

Tip:

When you don't need to see your location on the map, turn off My Location. This saves the battery by turning off not

just the display of your location, but also the GPS. If your map [tracks your location](#), it continues to do so in the background, turning on the GPS when needed. If you're collecting data, the GPS turns back on as needed to get collection locations.

3. **Layers** tool—Displays the layers in the map and allows you to toggle features on and off. While this changes what features are visible and display on the map, it doesn't change the data in the map, or change the map as it's viewed by other users.
4. **Collect new** tool—[Adds a feature](#).
5. **Measure** tool—Draws lines and shapes on the map and calculates their lengths and areas. See [Draw a shape](#) for details on drawing the measure shape.

Note:

The map author can disable the ability to measure.

This is done with the map in measure mode, presenting a different set of tools and different behavior. While viewing an open map, tapping the map highlights features and presents information about them. In measure mode, tapping the map adds vertices and updates the measurement.

6. **Search** tool—Searches for a place name, address, coordinate location, or feature. The map author configures the search and the hint text provides information about what you can search.
7. **More**—Expands the toolbar and shows the additional tools available. The screen capture shows the toolbar expanded, showing all available tools.
8. **Bookmarks** tool—Goes to the previously defined areas of interest. These include bookmarks defined in the map and the **My Places** that you've stored in the app. This tool is also used to add and delete locations from your **My Places**.
9. **Basemap** tool—Changes to a different basemap. The basemap, also called a reference map or background map, provides the background information displayed under the interactive features.

Note:




The map author can disable the ability to switch basemaps.

10. **Map**—The map appears here, including a basemap and features. You can pan, zoom in, and zoom out to see other areas.
11. (a and b) **Features**—Each feature (here a house) is an interactive piece of data on the map. As you work, you [add](#), [update](#), and [delete](#) features. When selected, the feature is highlighted on the map, as in the case of the feature marked 11b. They have additional information—including in some cases, attachments—that can be viewed by tapping the feature to add it to the **Results** and using a Results action. See **Results** and **Result action** later in this list for details.

Note:

In this Help system, the word "feature" refers to an item of interest on the map with which you can interact. The traditional meaning of a feature on a map refers to any item of interest. However, in this app, some of the traditional features are part of the basemap (background) and are not interactive. For example, in the Damage Assessment Survey (Tutorial) sample map, the cities and lakes are a part of the basemap and do not have additional information or interactivity. Any houses are items on top of the basemap, and they have additional information with which you can interact. You can view information about and edit the houses, so the houses in that map are features.

12. **Results**—The results generated when you tap to learn more about a feature or place, do a search, or get directions.

The callout in the screen capture shows the tap results, as indicated by the **Pin** icon . Search results show a **Search** icon , and route results (directions) show a **Route Arrow** icon .

If multiple sets of results are available (for example, tap and search results), switch between them by tapping the icon of the tab you want to view. Remove the result pins from the map and eliminate the result list by dragging the icon for the results toward the right edge of the screen and into the **Close** box that appears.

Note:

The screen capture shows the results on a phone. If you're working on an iPad, the full list of results show as a list on the right side of the screen. The selected result is marked in the upper right corner, and its details display below the list of results.

Tip:

The following are some tips for working with results on a phone:

- Flick the results to flip through them (if multiple results exist).
- Tap results—The active result is highlighted on the map. If it's outside the extent of the map, the map pans to include the active result. If the tap location is active, a pin displays on the map to show the location.
- Search results—The map zooms to the active search result.
- View all the results as a list by tapping the tab.
-

13. **Result action**—Display a menu of the actions available on a tap or search result.

These include actions such as **Show details** and **Directions to here**. Tap result actions also include **Copy**, **Edit**, **Delete**, and **Zoom to**, if applicable to the selected feature. Search result actions also include

Collect here and Add to my places.


Note:

The map author can disable the ability to get directions; therefore, the directions options will not always display.

Show details provides detailed information about the point of interest. It includes the location if it's a point, length if it's a line, or size if it's a polygon. If the point of interest is a feature, additional information, determined by the settings provided when the map was authored, displays. On an iPad, the details display below the list of results, so there is no

Show details action.

While viewing details about a feature, you can also zoom to, get directions to, **copy**, **edit**, and **delete** the feature. Tap

Action  to display a menu of these actions, and tap the menu item to take the desired action.

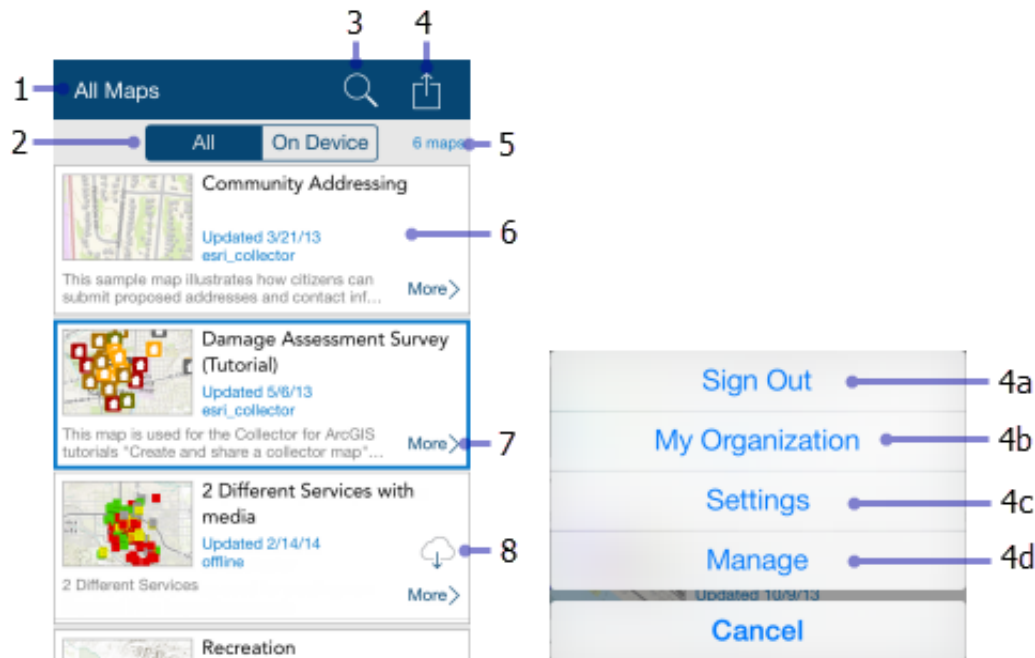
Map Gallery

Use the Map Gallery to open or find a different map. You can also manage your log in from the Map Gallery.

To go to the Map Gallery, tap **Maps** when viewing a map, or start the app while there is no open map. The currently open map is highlighted in the Map Gallery. When first opening the app, the most recently used map will be at the top of the gallery. To expand the **menu** when viewing the Map Gallery, tap the gallery title.

Note:

The available maps include maps your signed in account can access. If you used the app's **Try it** option, the available maps are the sample maps.



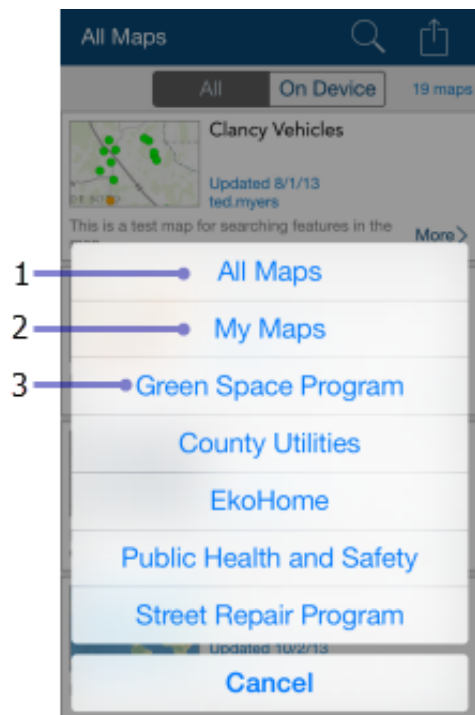
The following items are highlighted on the previous image of the Map Gallery:

1. **Gallery title**—Expands the [menu](#). Describes the group of maps you see. It is one of the following:
 - **All Maps** (as shown in the image) shows all available maps, including those you authored and those available to groups of which you are a member.
 - **My Maps** shows all the maps you authored. They are shown as a flat list, including all maps you authored, ignoring any folders that you have set up.
 - A group name shows all the maps shared with that group.
2. **Gallery filter**—Filters the gallery to show all maps or only those stored on the device.
3. **Search maps**—Search the displayed maps for the particular map you want to open. The available maps filter to only display maps whose title, summary, or tags match your search.
4. **Action**—Provides access to:
 1. **Sign Out**—Sign out of the app.
 2. **My Organization**—View information about your organization.
 3. **Settings**—View and update the account settings.
 4. **Manage**—Manage maps downloaded to your device.
5. **Map count**—The number of maps included in the gallery.
6. **Map card**—An available map. Tap the map thumbnail to open it.
7. **More**—Provides access to reload the map if it is open, open a map or return to it if it's already open, and show the map's details.
8. **Download**—Start downloading your map. Download is only visible if the map can be taken offline. For details, see [Go offline](#).

Menu

Use the menu to access collections of maps.

To expand the menu while viewing the Map Gallery, tap the gallery title. If you are viewing a map, return to the Map Gallery by tapping **Maps**, then expand the menu.



Note:

If you are using the **Try it** option, the menu is slightly different, and you won't see **My Maps**.

1. **All**—Tap to set the gallery to show all maps you can access. This includes all maps you authored, as well as those available to groups of which you are a member.
2. **My Maps**—Set the Map Gallery to show all the maps you authored.

3. **Group maps**—Displays the names of all groups of which you are a member and which have data collection maps. Tap the name of a group to set the Map Gallery to show all the maps that are shared with that group. The signed in user in the screen capture is a member of multiple groups including Green Space Program and Public Health and Safety.