

78°49'30"W 78°48'0"W 78°46'30"W 78°45'0"W 78°43'30"W 78°42'0"W 78°40'30"W 78°39'0"W 78°37'30"W 78°36'0"W

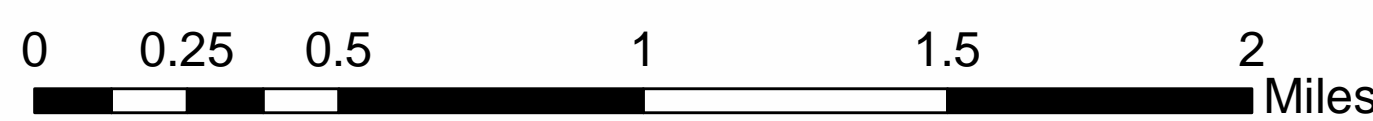
Masanutten Resort <sup>®</sup> CMD2



# Rocky Mtn Fire 2016

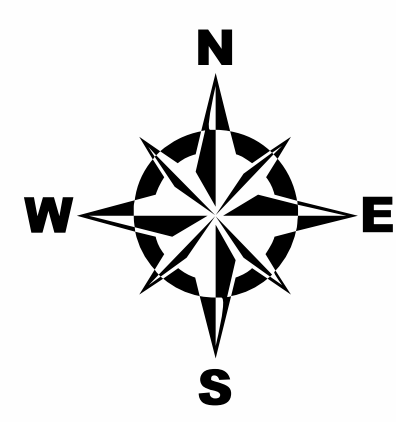
## VASHP-160006

Operation Period: 04/28/2016 0600-1800



### Briefing Map

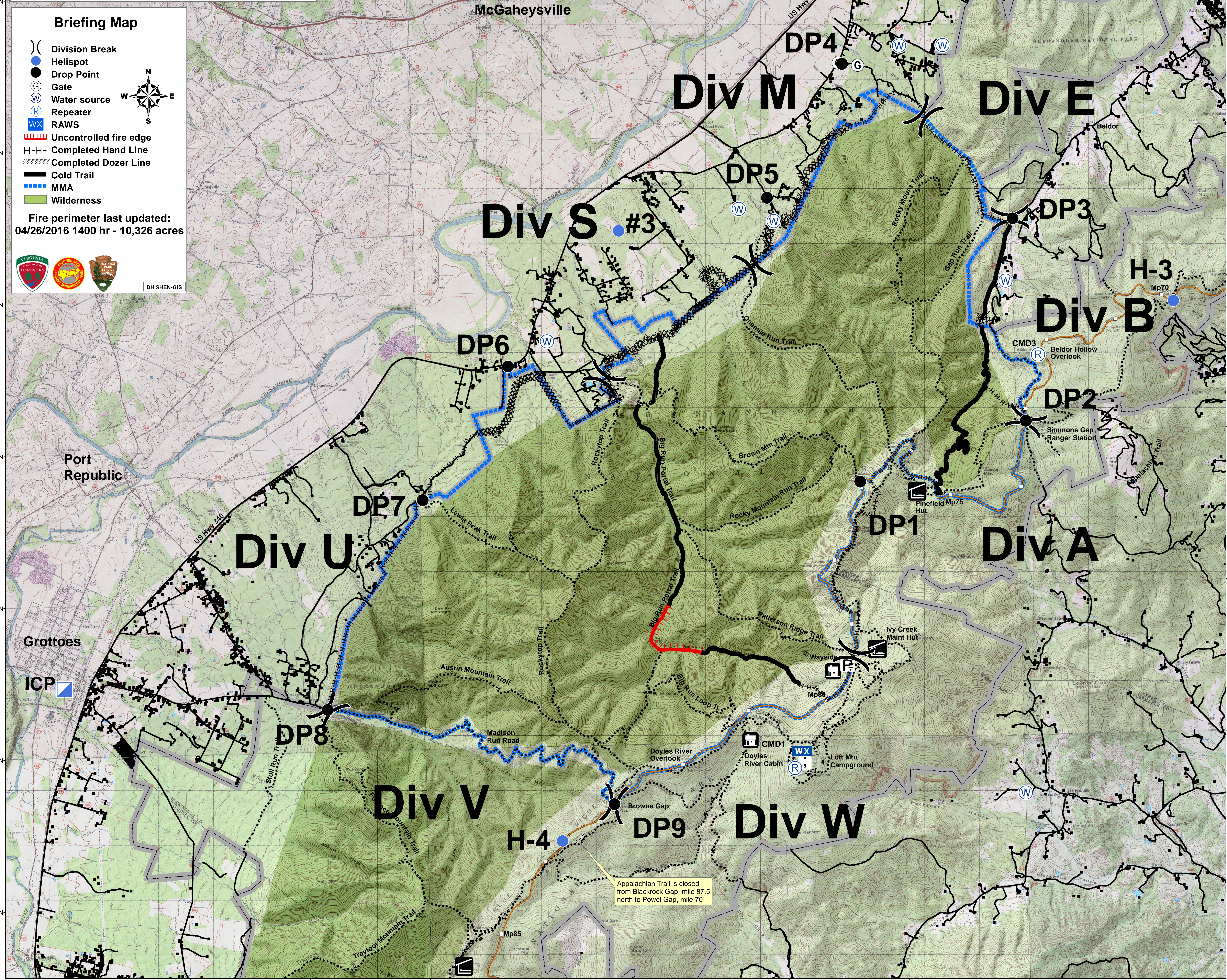
- Division Break
- Helispot
- Drop Point
- Gate
- Water source
- Repeater
- RAWS
- Uncontrolled fire edge
- Completed Hand Line
- Completed Dozer Line
- Cold Trail
- MMA
- Wilderness



Fire perimeter last updated:  
04/26/2016 1400 hr - 10,326 acres



DH SHEN-GIS



Appalachian Trail is closed  
from Blackrock Gap, mile 87.5  
north to Powell Gap, mile 70

78°49'30"W 78°48'0"W 78°46'30"W 78°45'0"W 78°43'30"W 78°42'0"W 78°40'30"W 78°39'0"W 78°37'30"W 78°36'0"W

38°22'30"N 38°21'0"N 38°19'30"N 38°18'0"N 38°16'30"N 38°15'0"N 38°13'30"N