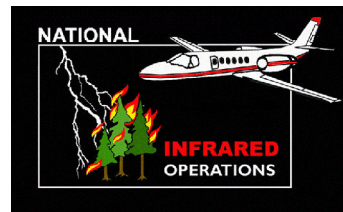
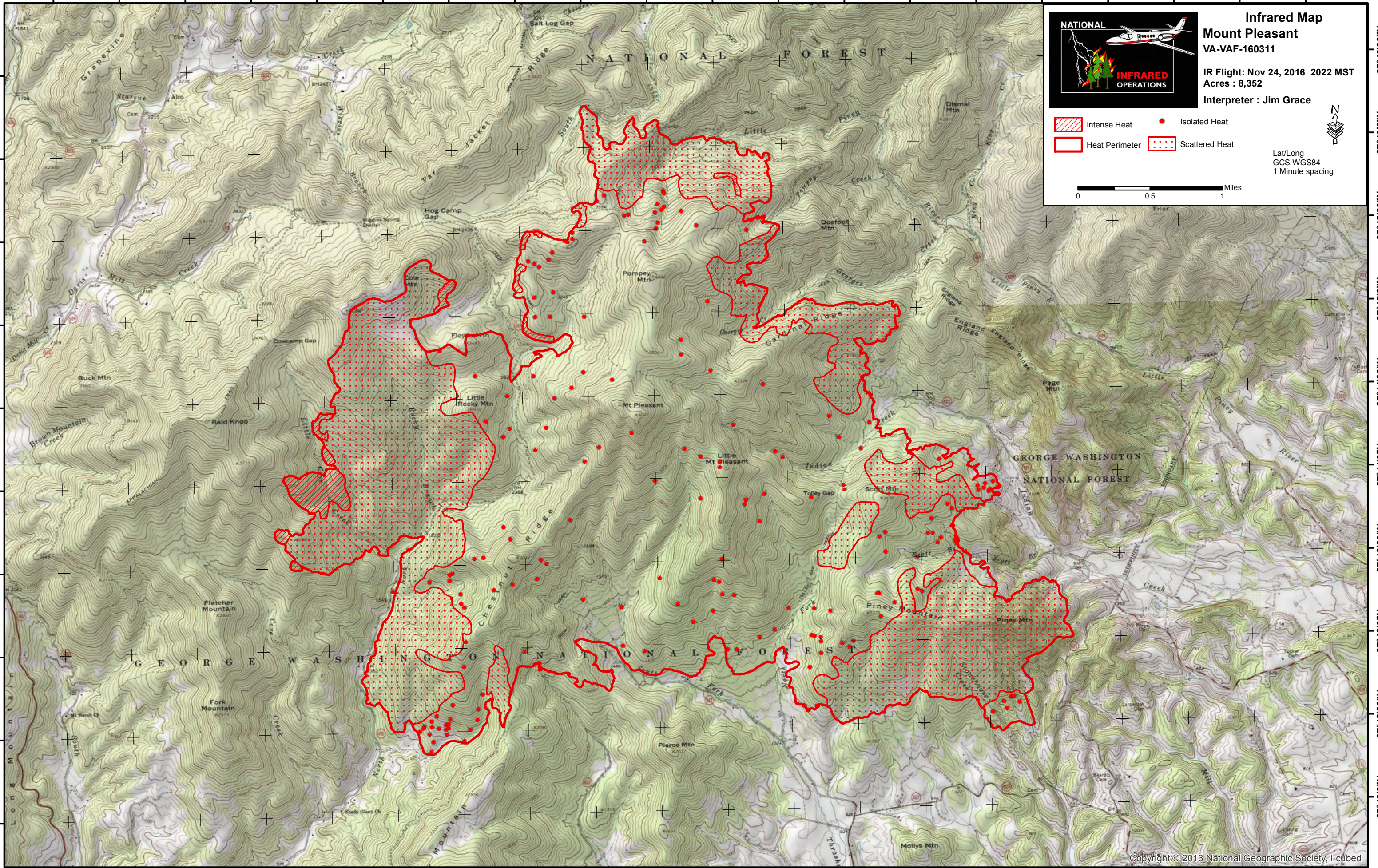


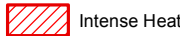

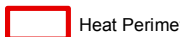
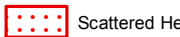
79°14'30"W 79°14'0"W 79°13'30"W 79°13'0"W 79°12'30"W 79°12'0"W 79°11'30"W 79°11'0"W 79°10'30"W 79°10'0"W 79°9'30"W 79°9'0"W 79°8'30"W 79°8'0"W 79°7'30"W 79°7'0"W 79°6'30"W 79°6'0"W 79°5'30"W 79°5'0"W

37°46'30"N
37°46'0"N
37°45'30"N
37°45'0"N
37°44'30"N
37°44'0"N
37°43'30"N
37°43'0"N
37°42'30"N
37°42'0"N

37°46'30"N
37°46'0"N
37°45'30"N
37°45'0"N
37°44'30"N
37°44'0"N
37°43'30"N
37°43'0"N
37°42'30"N
37°42'0"N



Infrared Map
Mount Pleasant
VA-VAF-160311
IR Flight: Nov 24, 2016 2022 MST
Acres : 8,352
Interpreter : Jim Grace

-  Intense Heat
-  Isolated Heat
-  Heat Perimeter
-  Scattered Heat



Lat/Long
GCS WGS84
1 Minute spacing

