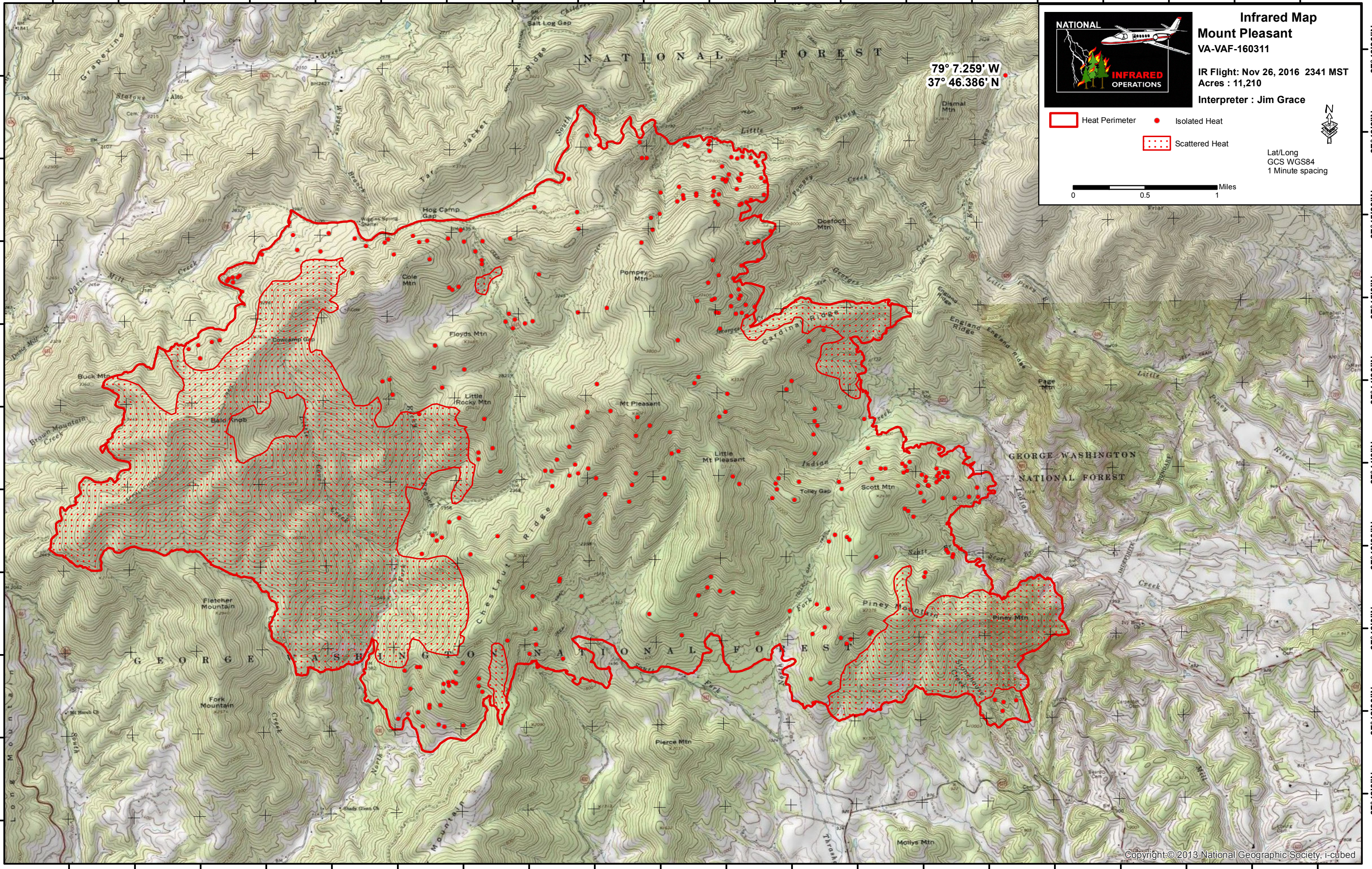


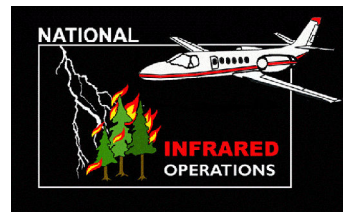
79°14'30"W 79°14'0"W 79°13'30"W 79°13'0"W 79°12'30"W 79°12'0"W 79°11'30"W 79°11'0"W 79°10'30"W 79°10'0"W 79°9'30"W 79°9'0"W 79°8'30"W 79°8'0"W 79°7'30"W 79°7'0"W 79°6'30"W 79°6'0"W 79°5'30"W 79°5'0"W

37°46'30"N  
37°46'0"N  
37°45'30"N  
37°45'0"N  
37°44'30"N  
37°44'0"N  
37°43'30"N  
37°43'0"N  
37°42'30"N  
37°42'0"N

37°46'30"N  
37°46'0"N  
37°45'30"N  
37°45'0"N  
37°44'30"N  
37°44'0"N  
37°43'30"N  
37°43'0"N  
37°42'30"N  
37°42'0"N

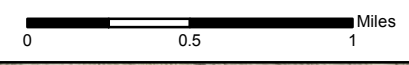


79° 7.259' W  
37° 46.386' N



**Infrared Map**  
**Mount Pleasant**  
VA-VAF-160311  
IR Flight: Nov 26, 2016 2341 MST  
Acres : 11,210  
Interpreter : Jim Grace

- Heat Perimeter
- Isolated Heat
- Scattered Heat



Lat/Long  
GCS WGS84  
1 Minute spacing

