

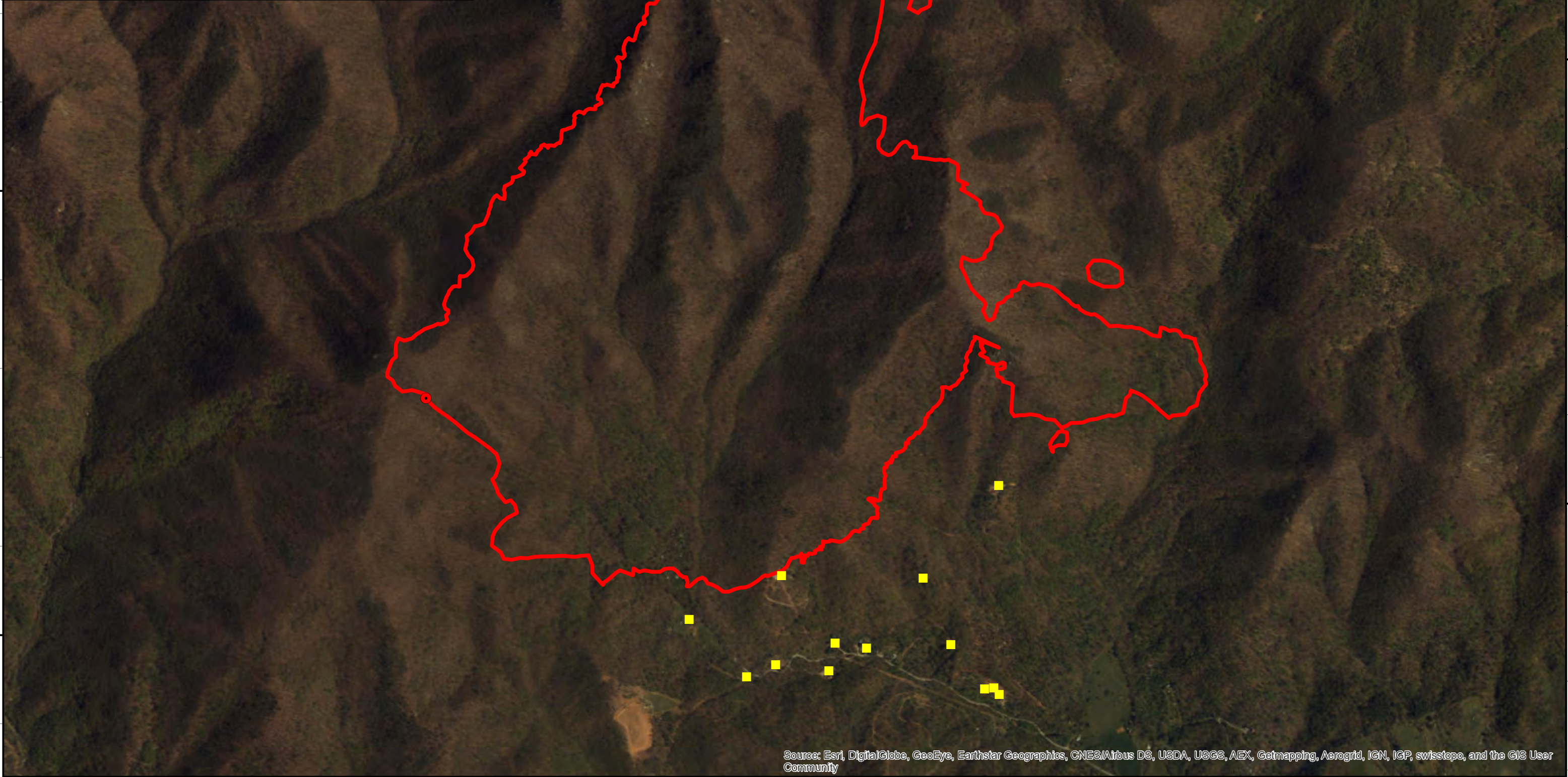
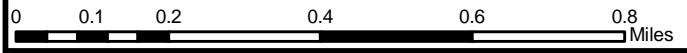
79°12'W 79°11'W 79°10'W 79°9'W 79°8'W

Mount Pleasant MMA Map
Map Date: 11/21/2016
Imagery Date: 11/20/2016
Imagery Time: 1700 EDT
IR Interpreted Acres: 1,191 acres

- Isolated Heat Sources
- Structures
- Heat Perimeter



NAD 1983 UTM Zone 16N



37°44'N

37°43'N

37°44'N

37°43'N

79°12'W 79°11'W 79°10'W 79°9'W 79°8'W

Source: Esri, DigitalGlobe, GeoEye, Earthstar Geographics, CNES/Airbus DS, USDA, USGS, AEX, Getmapping, Aerogrid, IGN, IGP, swisstopo, and the GIS User Community