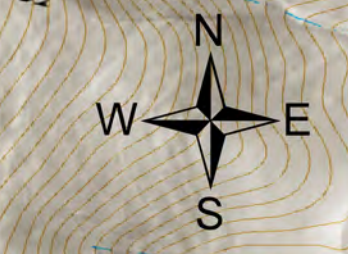
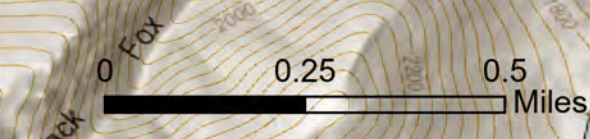


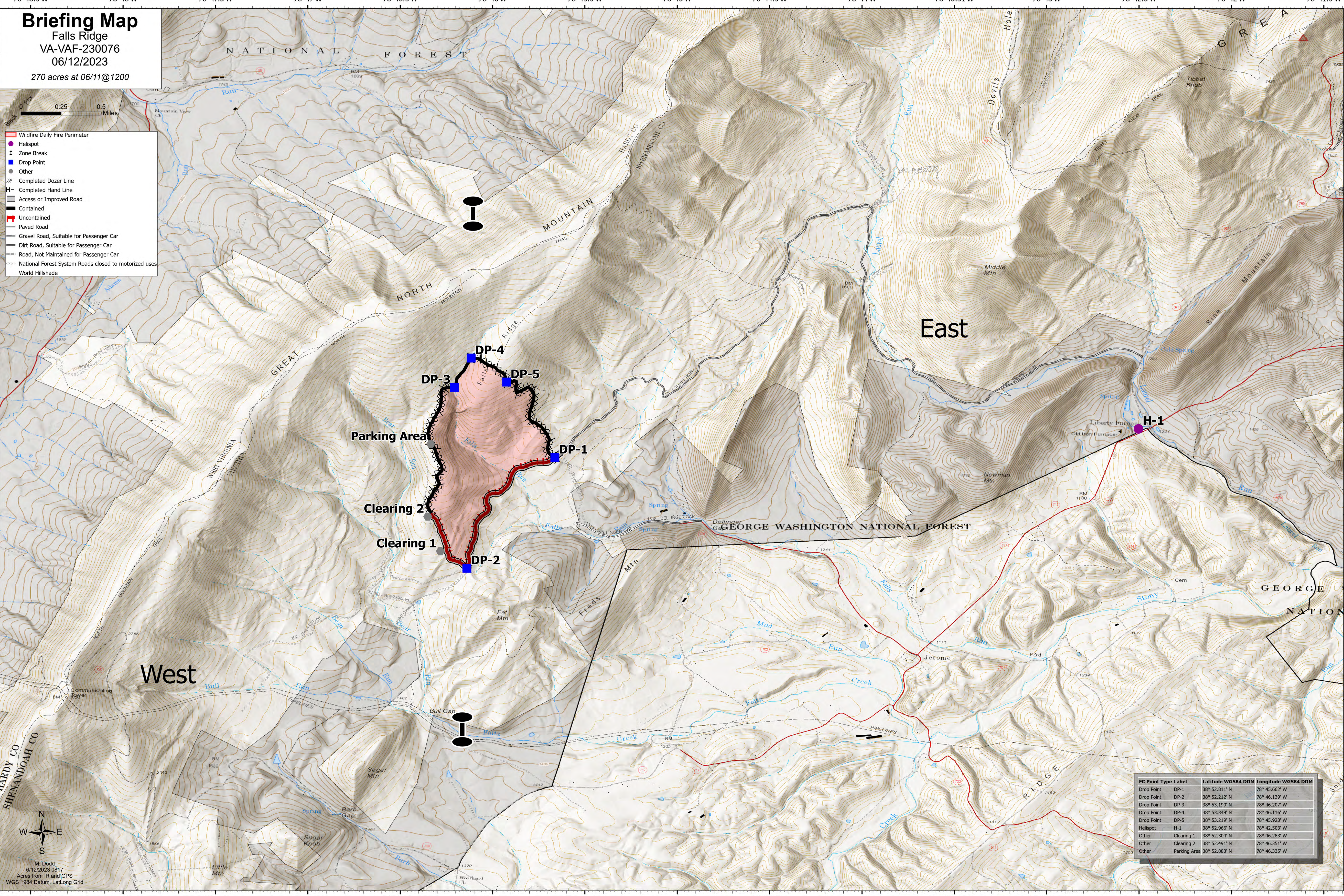
# Briefing Map

Falls Ridge  
VA-VAF-230076  
06/12/2023  
270 acres at 06/11@1200

- Wildfire Daily Fire Perimeter
- Helispot
- Zone Break
- Drop Point
- Other
- Completed Dozer Line
- Completed Hand Line
- Access or Improved Road
- Contained
- Uncontained
- Paved Road
- Gravel Road, Suitable for Passenger Car
- Dirt Road, Suitable for Passenger Car
- Road, Not Maintained for Passenger Car
- National Forest System Roads closed to motorized uses
- World Hillshade



M. Dodd  
6/12/2023 0817  
Acres from IR and GPS  
WGS 1984 Datum, Lat/Long Grid



FC Point Type	Label	Latitude WGS84 DDM	Longitude WGS84 DDM
Drop Point	DP-1	38° 52.811' N	78° 45.662' W
Drop Point	DP-2	38° 52.212' N	78° 46.139' W
Drop Point	DP-3	38° 53.190' N	78° 46.207' W
Drop Point	DP-4	38° 53.349' N	78° 46.116' W
Drop Point	DP-5	38° 53.219' N	78° 45.923' W
Helispot	H-1	38° 52.966' N	78° 42.503' W
Other	Clearing 1	38° 52.304' N	78° 46.283' W
Other	Clearing 2	38° 52.491' N	78° 46.351' W
Other	Parking Area	38° 52.883' N	78° 46.335' W