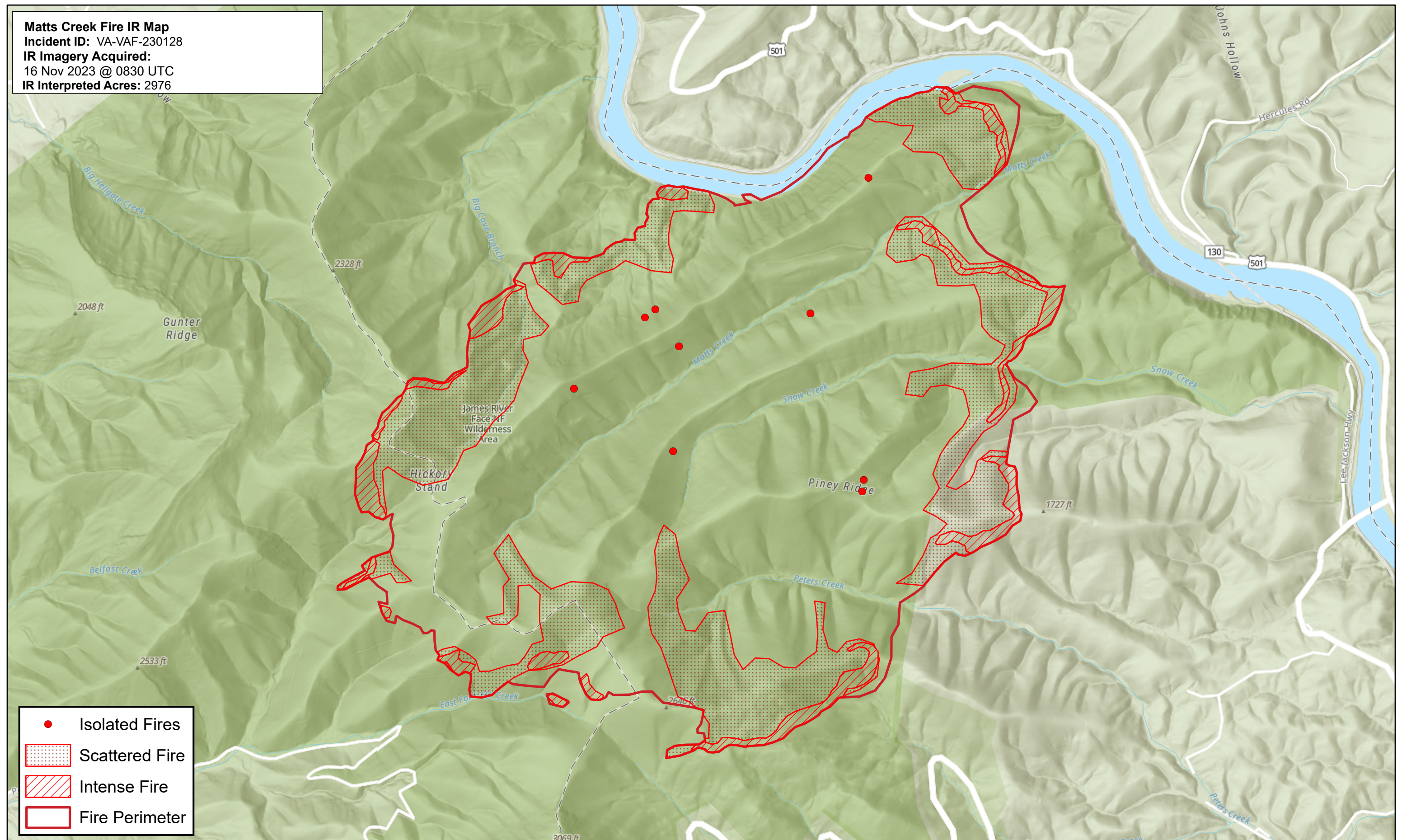


79°25'0"W

**Matts Creek Fire IR Map**  
 Incident ID: VA-VAF-230128  
 IR Imagery Acquired:  
 16 Nov 2023 @ 0830 UTC  
 IR Interpreted Acres: 2976



- Isolated Fires
- Scattered Fire
- Intense Fire
- Fire Perimeter

79°25'0"W

