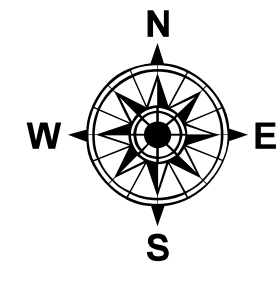
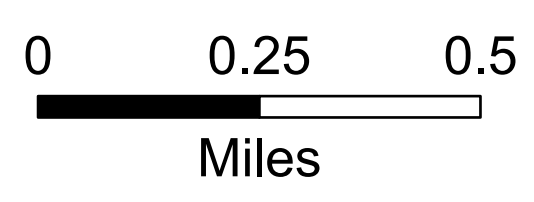


79°28'W 79°27.5'W 79°27'W 79°26.5'W 79°26'W 79°25.5'W 79°25'W 79°24.5'W 79°24'W 79°23.5'W 79°23'W 79°22.5'W

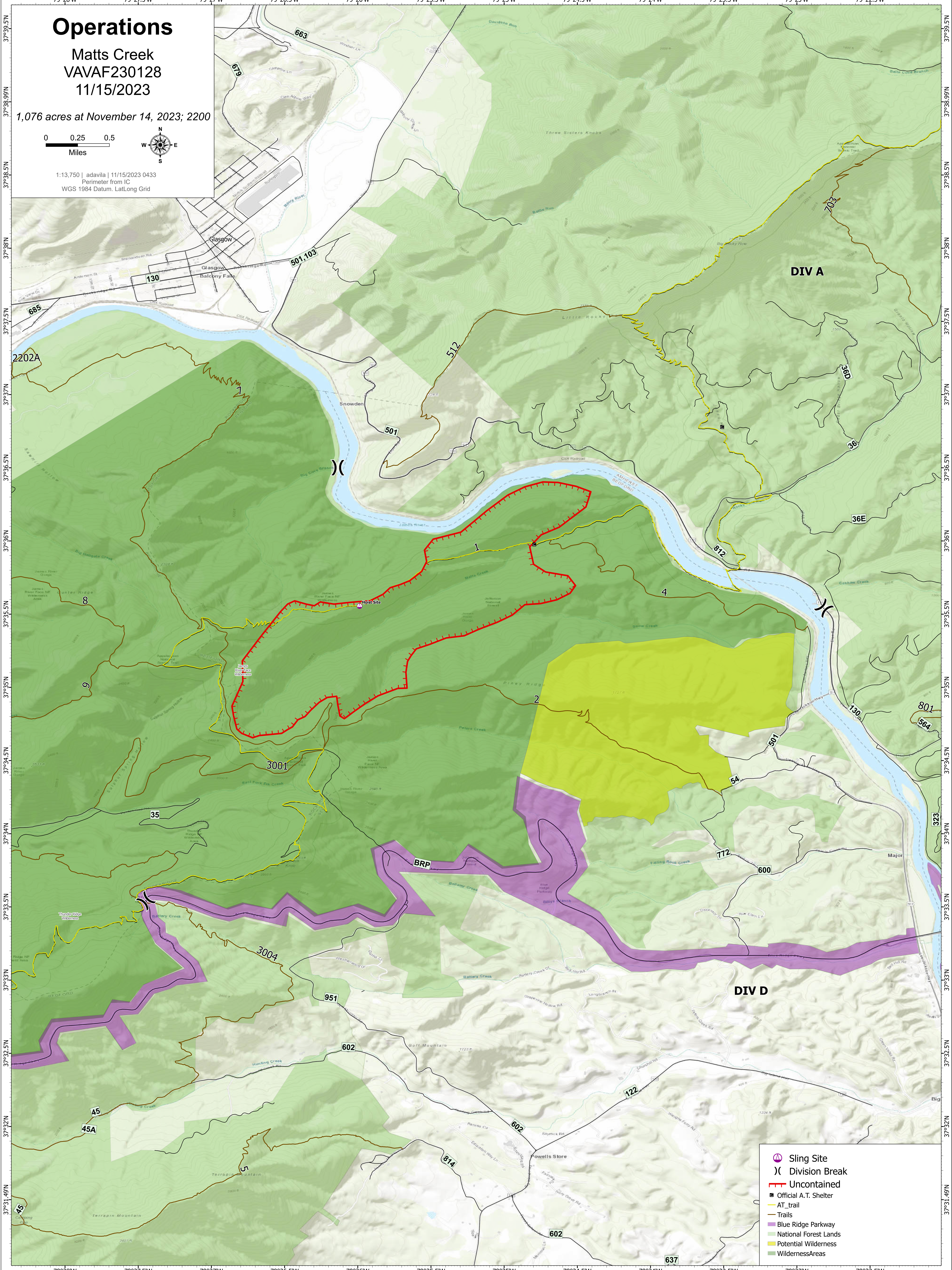
Operations

Matts Creek
VAVAF230128
11/15/2023

1,076 acres at November 14, 2023; 2200



1:13,750 | adavila | 11/15/2023 0433
Perimeter from IC
WGS 1984 Datum, LatLong Grid



- Sling Site
- Division Break
- Uncontained
- Official A.T. Shelter
- AT trail
- Trails
- Blue Ridge Parkway
- National Forest Lands
- Potential Wilderness
- Wilderness Areas

79°28'W 79°27.5'W 79°27'W 79°26.5'W 79°26'W 79°25.5'W 79°25'W 79°24.5'W 79°24'W 79°23.5'W 79°23'W 79°22.5'W