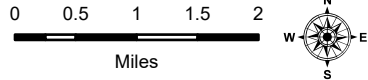


79°30.5'W 79°30'W 79°29.5'W 79°29'W 79°28'W 79°27.5'W 79°27'W 79°26.5'W 79°26'W 79°25.5'W 79°25'W 79°24.5'W 79°24'W 79°23.5'W 79°23'W 79°22.5'W 79°22'W 79°21.5'W 79°20.5'W

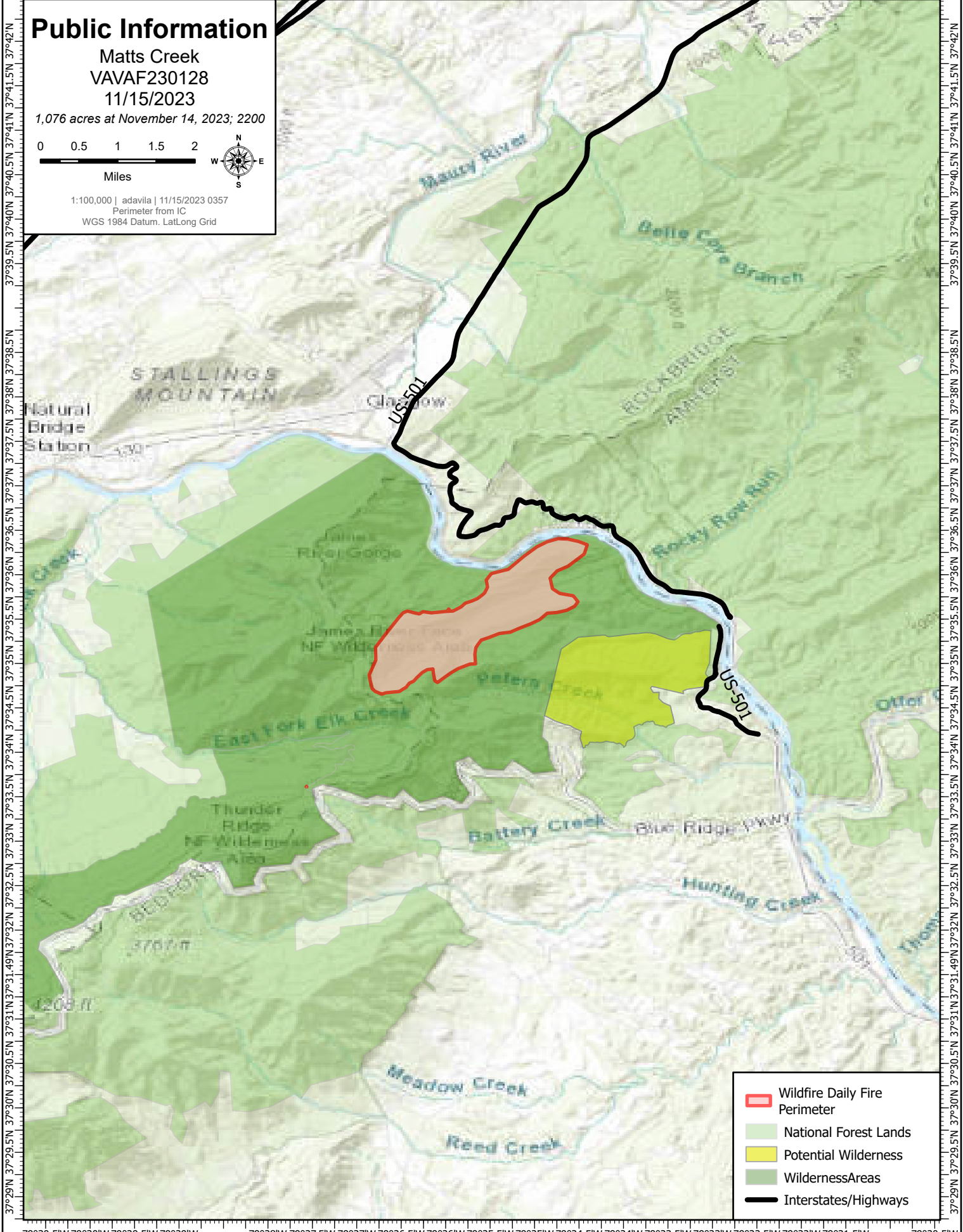
# Public Information





Matts Creek  
VAVAF230128  
11/15/2023

1,076 acres at November 14, 2023; 2200



1:100,000 | adavila | 11/15/2023 0357  
Perimeter from IC  
WGS 1984 Datum, LatLong Grid



-  Wildfire Daily Fire Perimeter
-  National Forest Lands
-  Potential Wilderness
-  Wilderness Areas
-  Interstates/Highways

79°30.5'W 79°30'W 79°29.5'W 79°29'W 79°28'W 79°27.5'W 79°27'W 79°26.5'W 79°26'W 79°25.5'W 79°25'W 79°24.5'W 79°24'W 79°23.5'W 79°23'W 79°22.5'W 79°22'W 79°21.5'W 79°20.5'W