

79°30.5'W 79°30'W 79°29.5'W 79°29'W 79°28'W 79°27.5'W 79°27'W 79°26.5'W 79°26'W 79°25.5'W 79°25'W 79°24.5'W 79°24'W 79°23.5'W 79°23'W 79°22.5'W 79°22'W 79°21.5'W 79°20.5'W

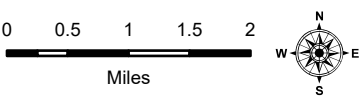
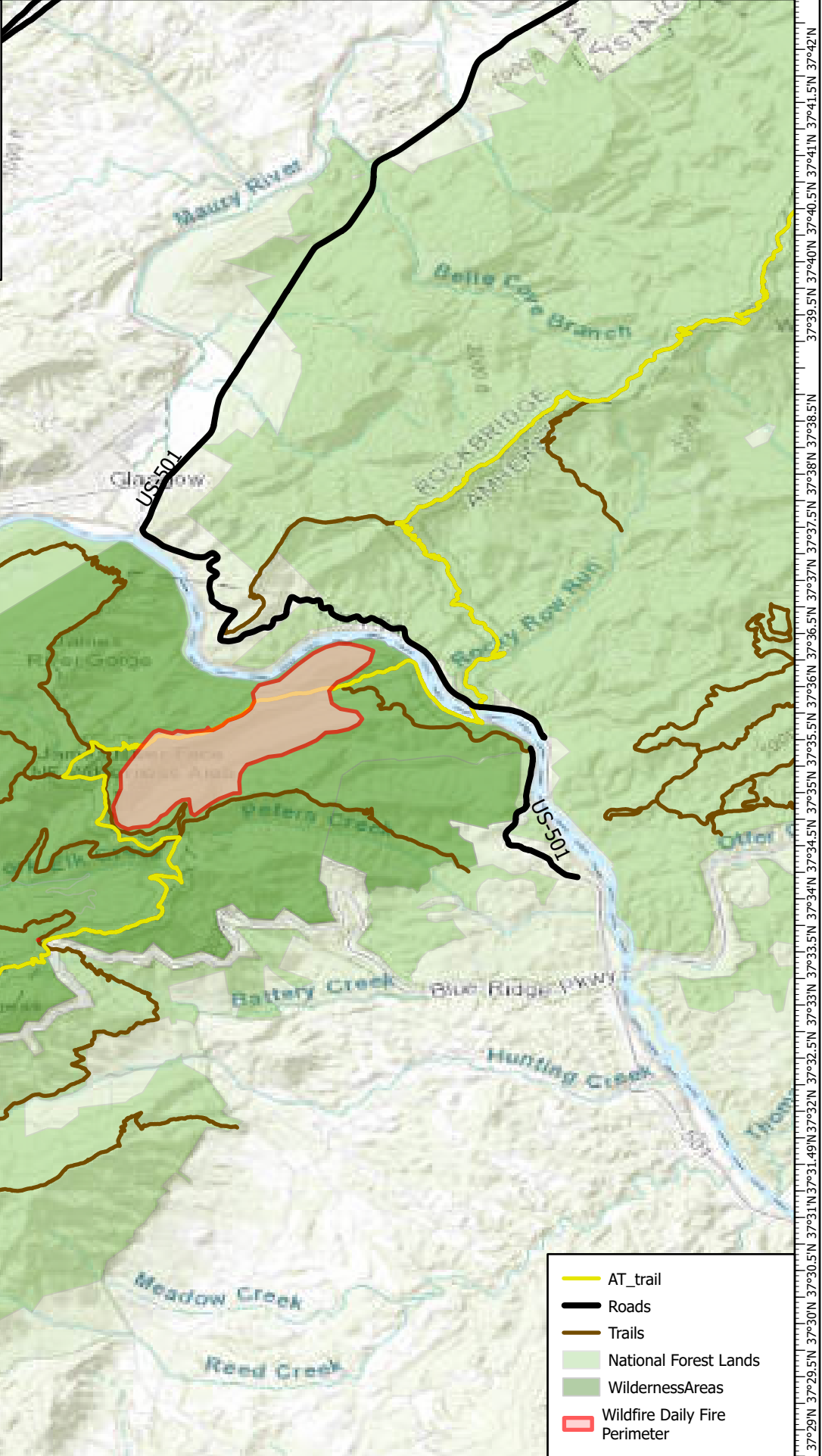
Public Information







Matts Creek
 VAVAF230128
 11/15/2023

1,076 acres at November 14, 2023; 2200

0 0.5 1 1.5 2
 Miles

1:100,000 | adavila | 11/15/2023 1436
 Perimeter from IC
 WGS 1984 Datum, LatLong Grid

-  AT_trail
-  Roads
-  Trails
-  National Forest Lands
-  WildernessAreas
-  Wildfire Daily Fire Perimeter

79°30.5'W 79°30'W 79°29.5'W 79°29'W 79°28'W 79°27.5'W 79°27'W 79°26.5'W 79°26'W 79°25.5'W 79°25'W 79°24.5'W 79°24'W 79°23.5'W 79°23'W 79°22.5'W 79°22'W 79°21.5'W 79°20.5'W