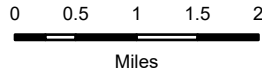


79°30.5'W 79°30'W 79°29.5'W 79°29'W 79°28'W 79°27.5'W 79°27'W 79°26.5'W 79°26'W 79°25.5'W 79°25'W 79°24.5'W 79°24'W 79°23.5'W 79°23'W 79°22.5'W 79°22'W 79°21.5'W 79°20.5'W

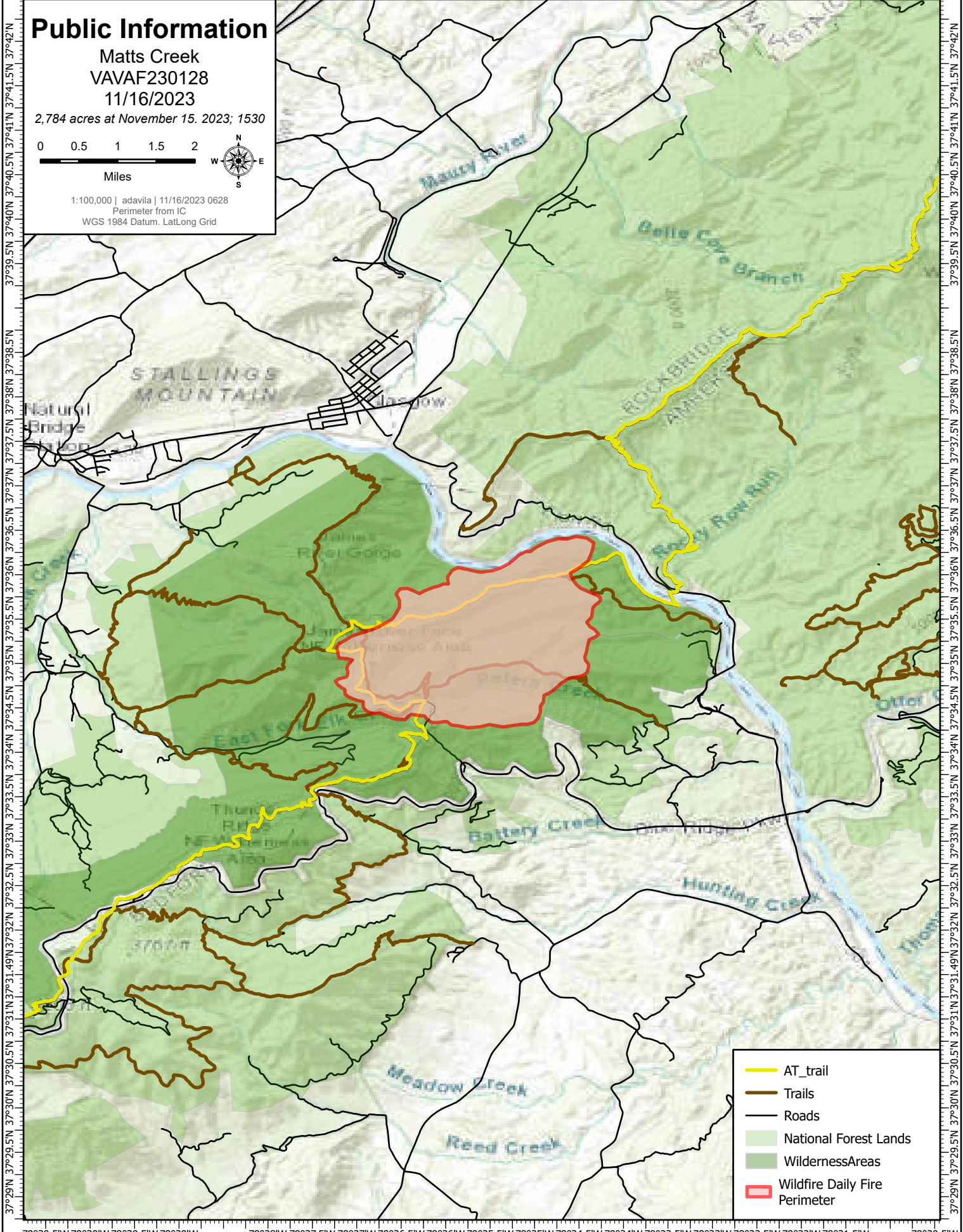
# Public Information




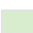


Matts Creek  
VAVAF230128  
11/16/2023

2,784 acres at November 15, 2023; 1530



1:100,000 | adavila | 11/16/2023 0628  
Perimeter from IC  
WGS 1984 Datum, LatLong Grid



-  AT\_trail
-  Trails
-  Roads
-  National Forest Lands
-  WildernessAreas
-  Wildfire Daily Fire Perimeter

79°30.5'W 79°30'W 79°29.5'W 79°29'W 79°28'W 79°27.5'W 79°27'W 79°26.5'W 79°26'W 79°25.5'W 79°25'W 79°24.5'W 79°24'W 79°23.5'W 79°23'W 79°22.5'W 79°22'W 79°21.5'W 79°20.5'W