

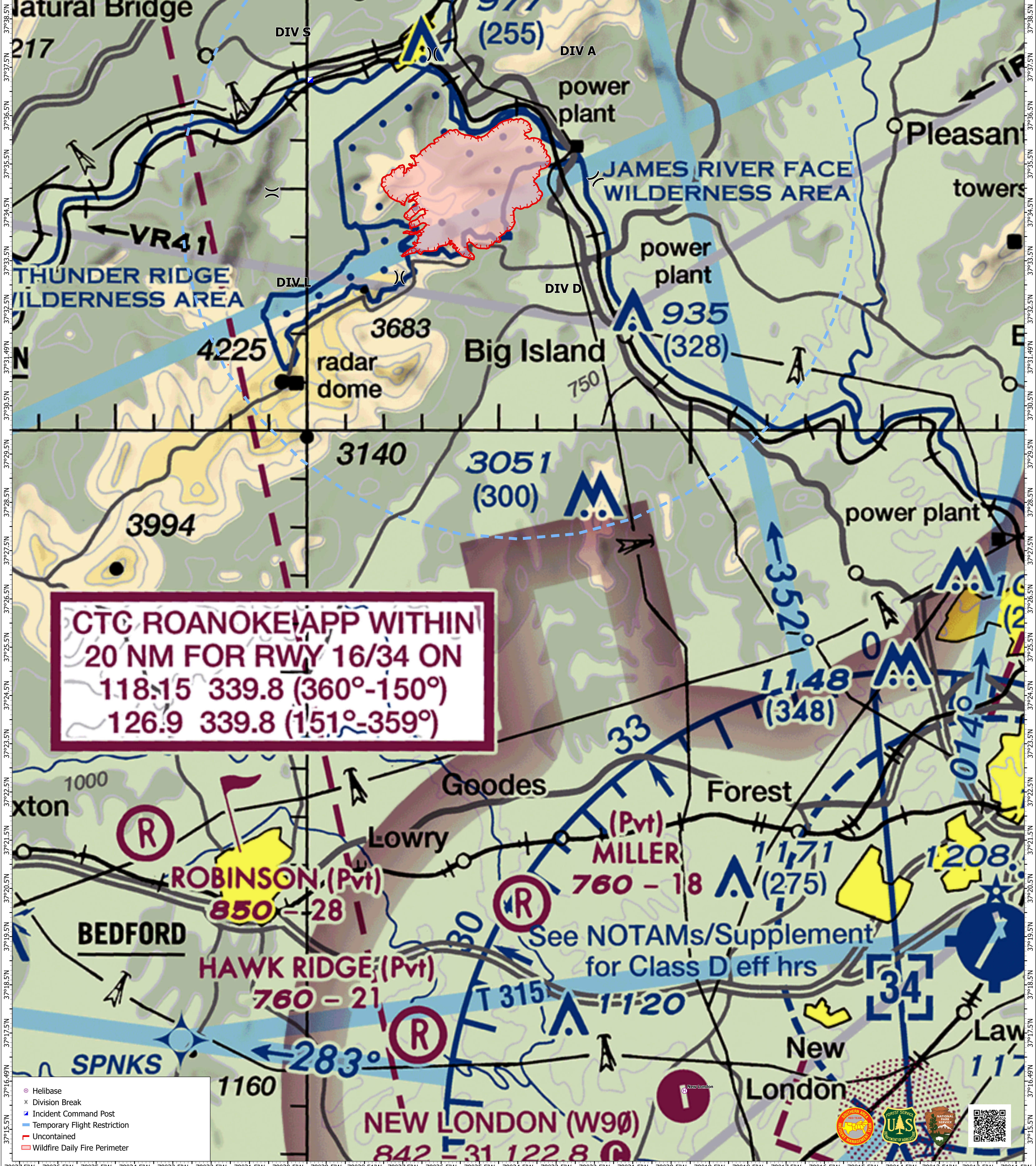
79°37.5'W, 79°36.5'W, 79°35.5'W, 79°34.5'W, 79°33.5'W, 79°32.5'W, 79°31.5'W, 79°30.5'W, 79°29.5'W, 79°28.5'W, 79°27.5'W, 79°26.5'W, 79°25.5'W, 79°24.5'W, 79°23.5'W, 79°22.5'W, 79°21.5'W, 79°20.5'W, 79°19.5'W, 79°18.5'W, 79°17.5'W, 79°16.5'W, 79°15.5'W, 79°14.5'W, 79°13.5'W, 79°12.5'W, 79°11.5'W

Aviation
 Matts Creek
 VA-VAF-230128
 11/17/23 Day

5,148 acres at 11/16/2023 1145

0 0.5 1 2 3
 Miles

1:57,143 | SA Red Team | 11/17/2023 1148
 Acres from IR
 WGS 1984 Datum, Lat/Long Grid



**CTC ROANOKE APP WITHIN
 20 NM FOR RWY 16/34 ON
 118.15 339.8 (360°-150°)
 126.9 339.8 (151°-359°)**

- Helibase
- ✕ Division Break
- ⬇ Incident Command Post
- ⬇ Temporary Flight Restriction
- ⬇ Uncontained
- ⬇ Wildfire Daily Fire Perimeter