

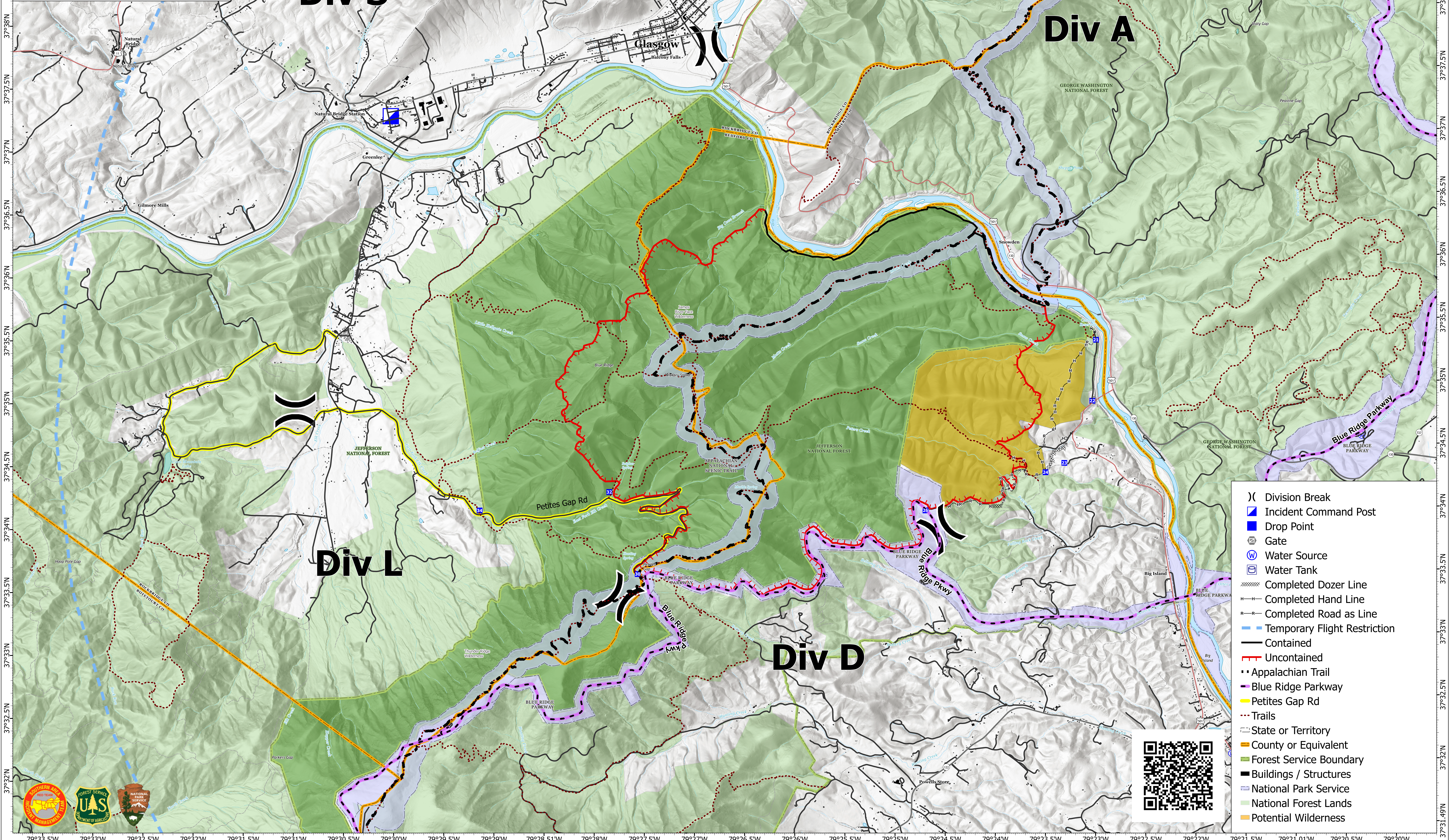
79°33.5'W 79°33'W 79°32.5'W 79°32'W 79°31.5'W 79°31'W 79°30.5'W 79°30'W 79°29.5'W 79°29'W 79°28.51'W 79°28'W 79°27.5'W 79°27'W 79°26.5'W 79°26'W 79°25.5'W 79°25'W 79°24.5'W 79°24'W 79°23.5'W 79°23'W 79°22.5'W 79°22'W 79°21.5'W 79°21.01'W 79°20.5'W 79°20'W 79°19.5'W

IWI
Matts Creek
VA-VAF-230128
November 18, 2023
6,835 acres at 11/18/2023 1:04 PM

0 0.25 0.5
Miles

1:18,000 | SA Red Team | 11/18/2023 1704
Acres from IR
North American 1983 Datum. Lat/Long Grid

Type	ID	Latitude	Longitude	911 Address
Drop Point	DP-21	37° 35.369' N	79° 22.913' W	North End of Bald Eagle Dr Big Island VA
Drop Point	DP-22	37° 34.885' N	79° 22.959' W	1053 BALD EAGLE DR BIG ISLAND VA 14526
Drop Point	DP-23	37° 34.395' N	79° 23.249' W	Big Island Hunt Club 1466 HUNT CLUB RD BIG ISLAND VA 14526
Drop Point	DP-24	37° 34.323' N	79° 23.438' W	Big Island Hunt Club 1466 HUNT CLUB RD BIG ISLAND VA 14526
Drop Point	DP-26	37° 34.036' N	79° 24.642' W	Blue Ridge Parkway, Bedford Co. VA
Drop Point	DP-30	37° 33.569' N	79° 27.524' W	Pettes Gap Rd at Blue Ridge Parkway
Drop Point	DP-32	37° 34.224' N	79° 27.794' W	Pettes Gap Rd, Rockbridge Co. 1.5 mi east of DP 34
Drop Point	DP-34	37° 34.094' N	79° 29.090' W	686 PETITES GAP RD NATURAL BRIDGE STATION VA 24579
Helibase		37° 16.300' N	79° 20.150' W	New London Airport 1114 WHEELS DR NEW LONDON VA
ICP		37° 37.238' N	79° 29.914' W	43 Natural Bridge School Rd, Natural Bridge Station VA 24579



79°33.5'W 79°33'W 79°32.5'W 79°32'W 79°31.5'W 79°31'W 79°30.5'W 79°30'W 79°29.5'W 79°29'W 79°28.51'W 79°28'W 79°27.5'W 79°27'W 79°26.5'W 79°26'W 79°25.5'W 79°25'W 79°24.5'W 79°24'W 79°23.5'W 79°23'W 79°22.5'W 79°22'W 79°21.5'W 79°21.01'W 79°20.5'W 79°20'W 79°19.5'W

