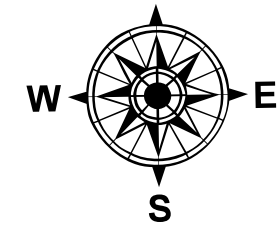


AirOps

Matts Creek
VA-VAF-230128
11/18/23 Day

5,978 acres at 11/17/2023 9:36 AM

00.25 0.5 1 1.5 2
Miles



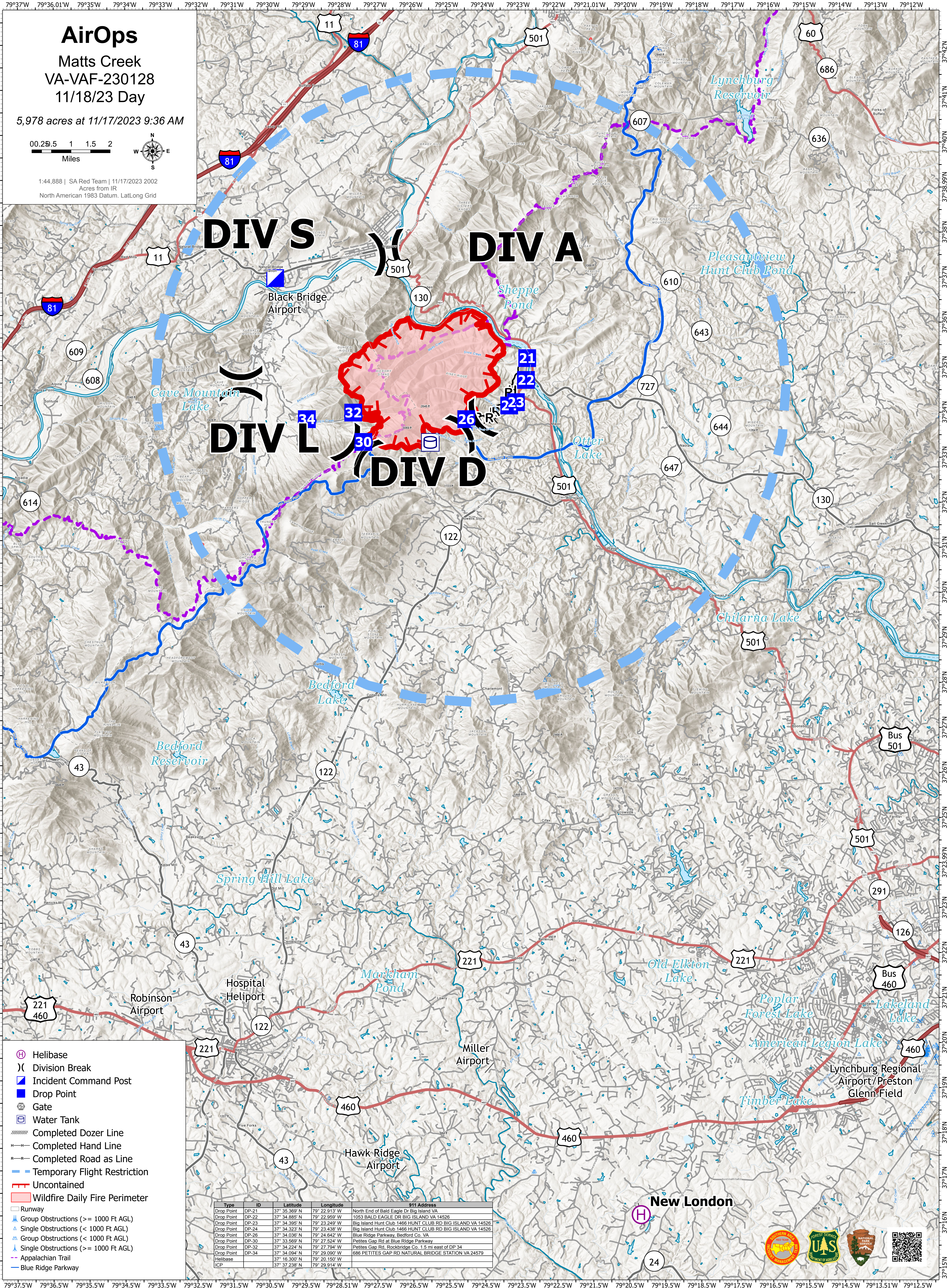
1:44,888 | SA Red Team | 11/17/2023 2002
Acres from IR
North American 1983 Datum, Lat/Long Grid

DIV S

DIV A

DIV L

DIV D



Type	ID	Latitude	Longitude	911 Address
Drop Point	DP-21	37° 35.369' N	79° 22.913' W	North End of Bald Eagle Dr Big Island VA
Drop Point	DP-22	37° 34.885' N	79° 22.959' W	1053 BALD EAGLE DR BIG ISLAND VA 14526
Drop Point	DP-23	37° 34.395' N	79° 23.249' W	Big Island Hunt Club 1466 HUNT CLUB RD BIG ISLAND VA 14526
Drop Point	DP-24	37° 34.323' N	79° 23.438' W	Big Island Hunt Club 1466 HUNT CLUB RD BIG ISLAND VA 14526
Drop Point	DP-26	37° 34.036' N	79° 24.642' W	Blue Ridge Parkway, Bedford Co. VA
Drop Point	DP-30	37° 33.569' N	79° 27.524' W	Petties Gap Rd at Blue Ridge Parkway
Drop Point	DP-32	37° 34.224' N	79° 27.794' W	Petties Gap Rd, Rockbridge Co. 1.5 mi east of DP 34
Drop Point	DP-34	37° 34.094' N	79° 29.090' W	886 PETTIES GAP RD NATURAL BRIDGE STATION VA 24579
Helibase		37° 16.300' N	79° 20.150' W	
ICP		37° 37.238' N	79° 29.914' W	

