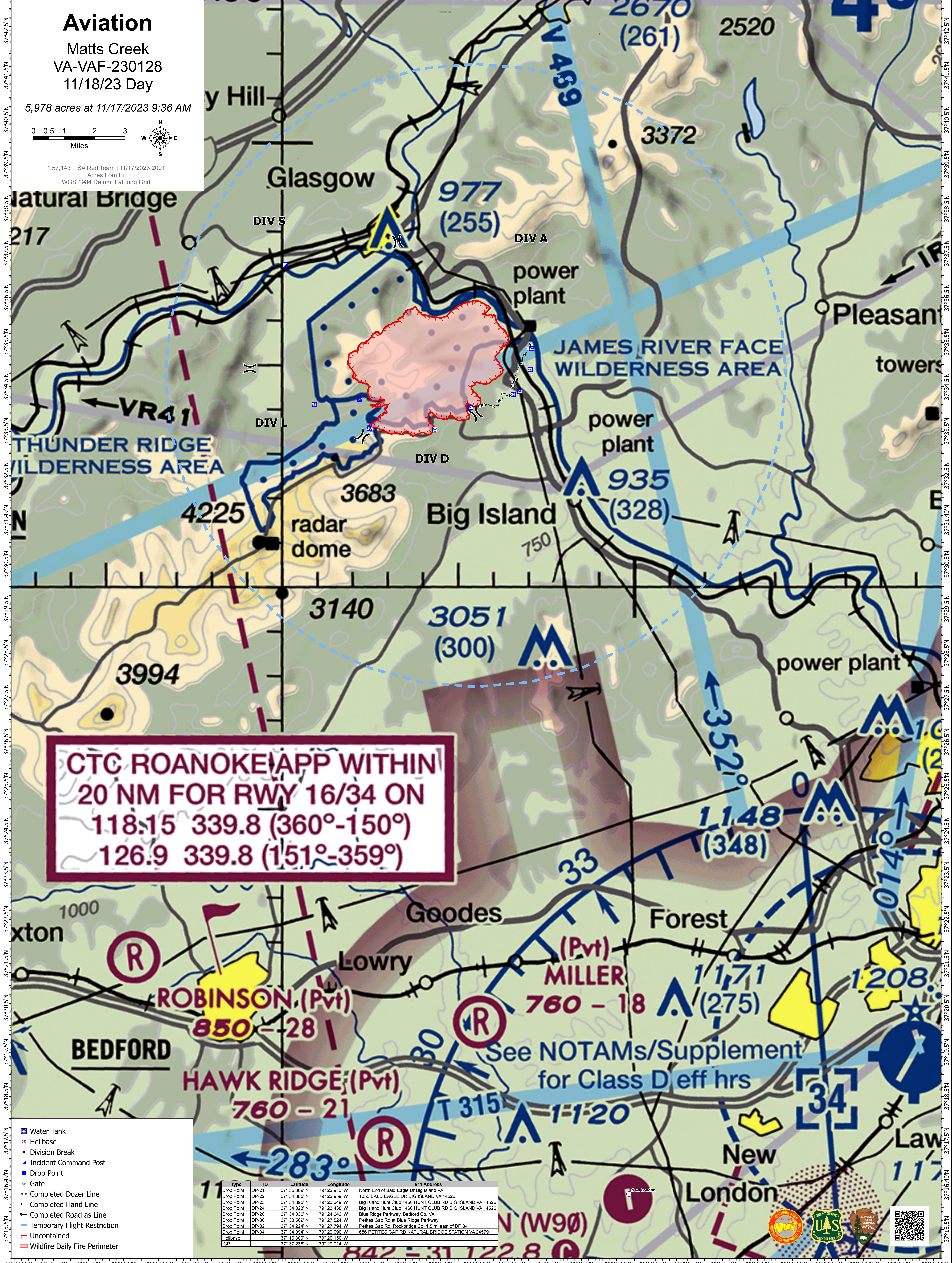
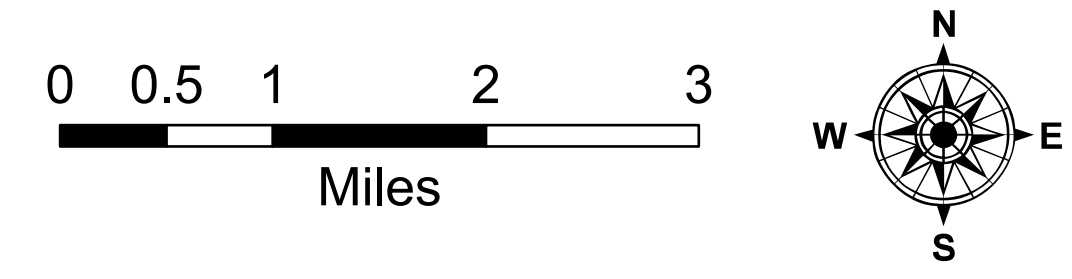


79°37.5'W 79°36.5'W 79°35.5'W 79°34.5'W 79°33.5'W 79°32.5'W 79°31.5'W 79°30.5'W 79°29.5'W 79°28.5'W 79°27.5'W 79°26.5'W 79°25.5'W 79°24.5'W 79°23.5'W 79°22.5'W 79°21.5'W 79°20.5'W 79°19.5'W 79°18.5'W 79°17.5'W 79°16.5'W 79°15.5'W 79°14.5'W 79°13.5'W 79°12.5'W 79°11.5'W



Aviation
 Matts Creek
 VA-VAF-230128
 11/18/23 Day
 5,978 acres at 11/17/2023 9:36 AM
 1:57,143 | SA Red Team | 11/17/2023 2001
 Acres from IR
 WGS 1984 Datum, Lat/Long Grid



**CTC ROANOKE APP WITHIN
 20 NM FOR RWY 16/34 ON
 118.15 339.8 (360°-150°)
 126.9 339.8 (151°-359°)**

Type	ID	Latitude	Longitude	911 Address
Drop Point	DP-21	37° 35.369' N	79° 22.913' W	North End of Bald Eagle Dr Big Island VA
Drop Point	DP-22	37° 34.885' N	79° 22.959' W	1053 BALD EAGLE DR BIG ISLAND VA 14526
Drop Point	DP-23	37° 34.395' N	79° 23.249' W	Big Island Hunt Club 1466 HUNT CLUB RD BIG ISLAND VA 14526
Drop Point	DP-24	37° 34.323' N	79° 23.438' W	Big Island Hunt Club 1466 HUNT CLUB RD BIG ISLAND VA 14526
Drop Point	DP-26	37° 34.036' N	79° 24.642' W	Blue Ridge Parkway, Bedford Co. VA
Drop Point	DP-30	37° 33.569' N	79° 27.524' W	Petties Gap Rd at Blue Ridge Parkway
Drop Point	DP-32	37° 34.224' N	79° 27.794' W	Petties Gap Rd, Rockbridge Co. 1.5 mi east of DP 34
Drop Point	DP-34	37° 34.064' N	79° 29.090' W	686 PETTIES GAP RD NATURAL BRIDGE STATION VA 24579
Helibase		37° 16.300' N	79° 20.150' W	
ICP		37° 37.238' N	79° 29.914' W	

- Water Tank
- Helibase
- Division Break
- Incident Command Post
- Drop Point
- Gate
- Completed Dozer Line
- Completed Hand Line
- Completed Road as Line
- Temporary Flight Restriction
- Uncontained
- Wildfire Daily Fire Perimeter

