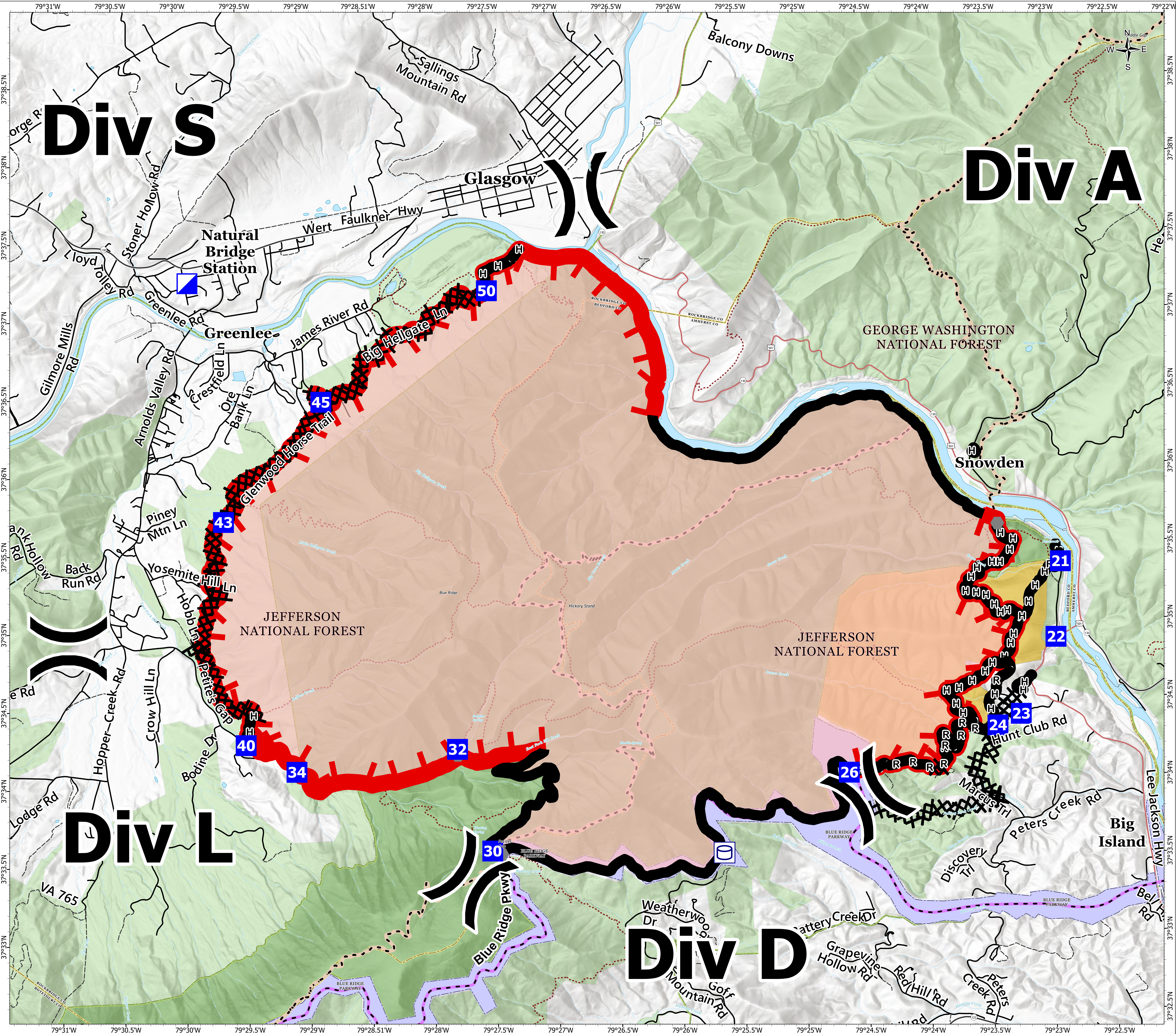


BRIEFING

Matts Creek
VA-VAF-230128
November 21, 2023 Day
11,016 acres at 11/20/2023 1900

- ⌘ Division Break
- 📍 Incident Command Post
- 📍 Drop Point
- Other
- 🚪 Gate
- 🛢 Water Tank
- ⌘ Completed Dozer Line
- 🚧 Completed Hand Line
- 🛣 Completed Road as Line
- Contained
- 🔴 Uncontained
- 🛤 Appalachian Trail
- 🛤 Blue Ridge Parkway
- ⋯ Trails
- 🗺 County or Equivalent
- 🇺🇸 NPS
- 🌲 Forest Service
- 🔴 Wildfire Daily Fire Perimeter
- 🌲 National Forest Lands
- 🟡 Potential Wilderness
- 🌲 Wilderness Areas



SA Red Team | 11/20/2023 2015
Acres from IR and GPS
NAD 1983 UTM Zone 17N