

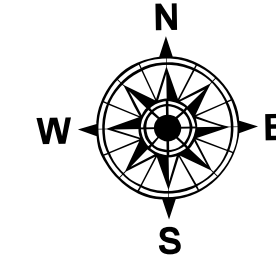
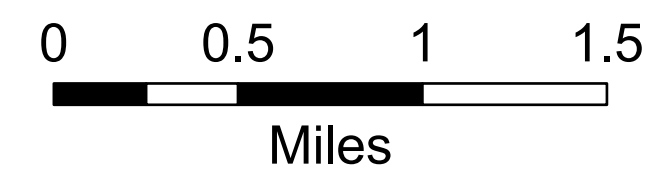
Strategic Ops

Matts Creek

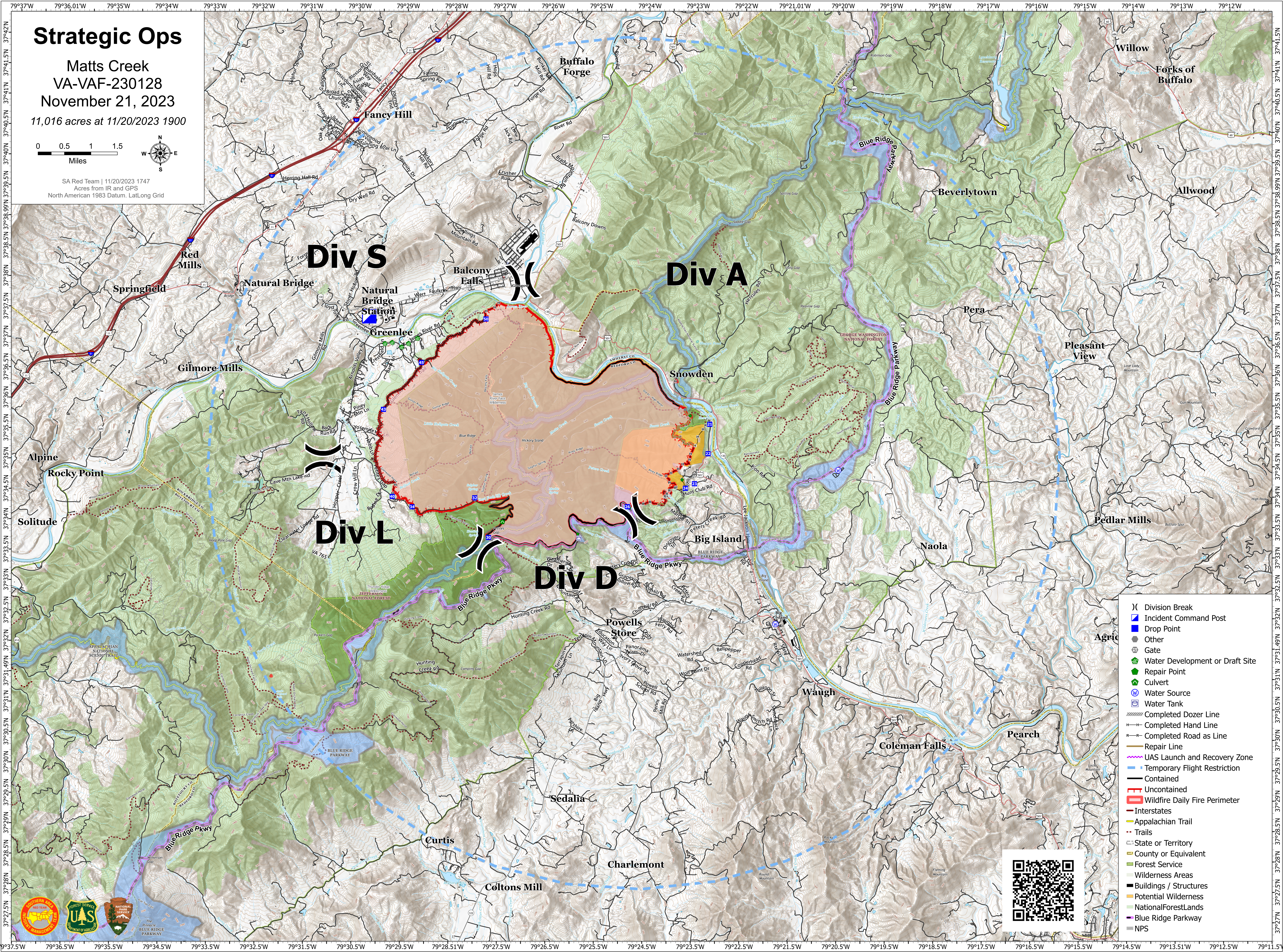
VA-VAF-230128

November 21, 2023

11,016 acres at 11/20/2023 1900



SA Red Team | 11/20/2023 1747
Acres from IR and GPS
North American 1983 Datum, Lat/Long Grid



- () Division Break
- Incident Command Post
- Drop Point
- Other
- ⊗ Gate
- ⊗ Water Development or Draft Site
- ⊗ Repair Point
- ⊗ Culvert
- ⊗ Water Source
- ⊗ Water Tank
- ⊗ Completed Dozer Line
- ⊗ Completed Hand Line
- ⊗ Completed Road as Line
- ⊗ Repair Line
- ⊗ UAS Launch and Recovery Zone
- ⊗ Temporary Flight Restriction
- ⊗ Contained
- ⊗ Uncontained
- ⊗ Wildfire Daily Fire Perimeter
- ⊗ Interstates
- ⊗ Appalachian Trail
- ⊗ Trails
- ⊗ State or Territory
- ⊗ County or Equivalent
- ⊗ Forest Service
- ⊗ Wilderness Areas
- ⊗ Buildings / Structures
- ⊗ Potential Wilderness
- ⊗ National Forest Lands
- ⊗ Blue Ridge Parkway
- ⊗ NPS

