

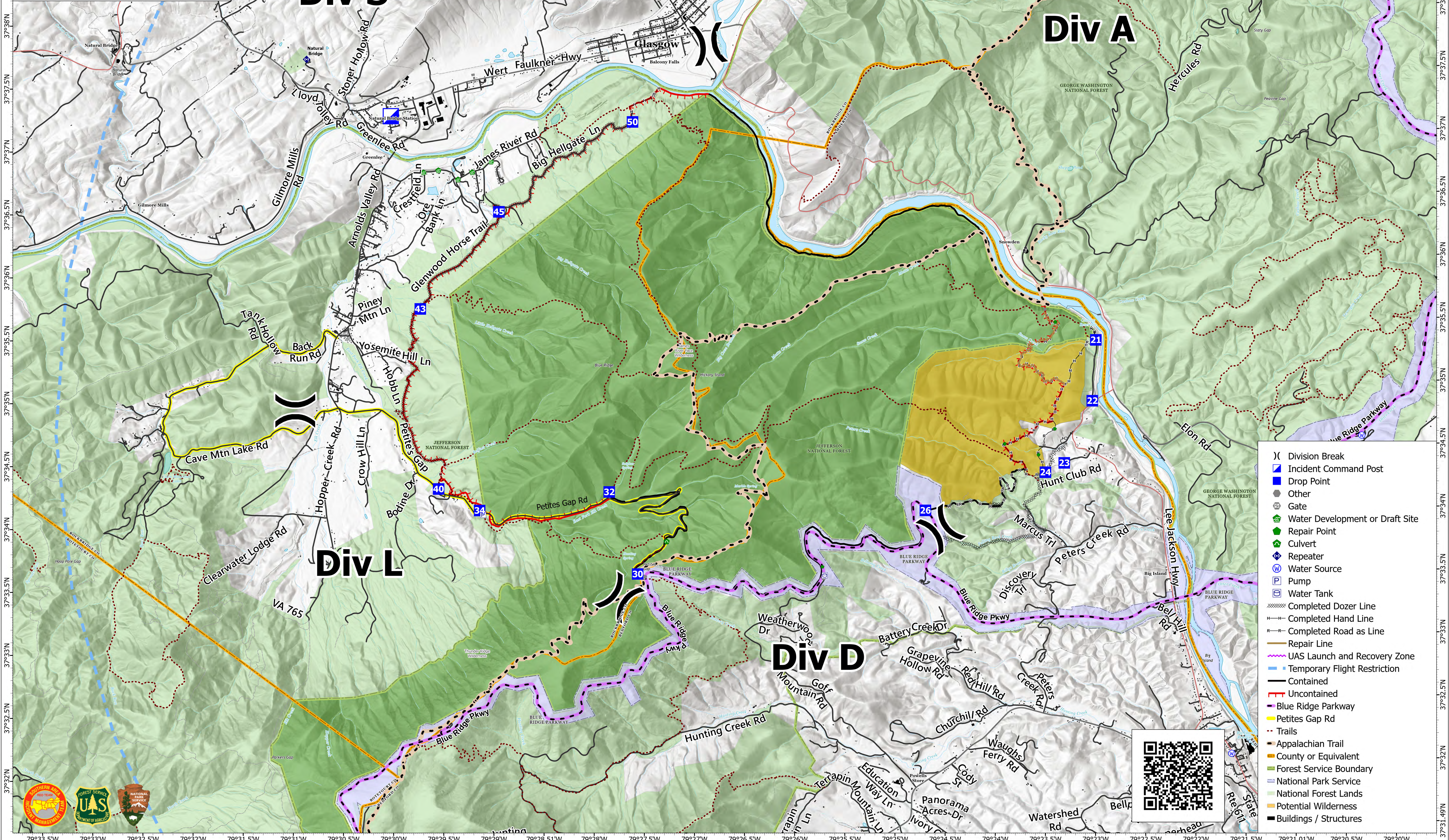
79°33.5'W 79°33'W 79°32.5'W 79°32'W 79°31.5'W 79°31'W 79°30.5'W 79°30'W 79°29.5'W 79°29'W 79°28.51'W 79°28'W 79°27.5'W 79°27'W 79°26.5'W 79°26'W 79°25.5'W 79°25'W 79°24.5'W 79°24'W 79°23.5'W 79°23'W 79°22.5'W 79°22'W 79°21.5'W 79°21.01'W 79°20.5'W 79°20'W 79°19.5'W

**IWI**  
**Matts Creek**  
**VA-VAF-230128**  
**November 22, 2023**  
**11,020 acres at 11/21/2023 12:30 PM**

0 0.25 0.5  
Miles

SA Red Team | 11/21/2023 1530  
Acres from IR and GPS  
North American 1983 Datum. Lat/Long Grid

Type	ID	Latitude	Longitude	Elevation (ft)	911 Address
Drop Point	DP-21	37° 35.969' N	79° 22.913' W	707	North End of Bald Eagle Dr. 5 mi north of DP 22 Big Island VA
Drop Point	DP-22	37° 34.885' N	79° 22.959' W	717	1053 BALD EAGLE DR BIG ISLAND VA 14526
Drop Point	DP-23	37° 34.395' N	79° 23.249' W	889	Big Island Hunt Club 1466 HUNT CLUB RD BIG ISLAND VA 14526
Drop Point	DP-24	37° 34.323' N	79° 23.438' W	910	Big Island Hunt Club 1466 HUNT CLUB RD BIG ISLAND VA 14526
Drop Point	DP-26	37° 34.036' N	79° 24.642' W	1,214	Blue Ridge Parkway, 5 mi north of 1101 BELLAMY CREEK LN Bedford Co. VA
Drop Point	DP-30	37° 33.569' N	79° 27.524' W	2,361	Junction of Petites Gap Rd and Blue Ridge Parkway
Drop Point	DP-32	37° 34.224' N	79° 27.794' W	1,524	Pettes Gap Rd, Rockbridge Co. 1.5 mi east of DP 34
Drop Point	DP-34	37° 34.094' N	79° 29.090' W	1,115	856 PETITES GAP RD NATURAL BRIDGE STATION VA 24579
Drop Point	DP-40	37° 34.270' N	79° 29.498' W	1,030	Devil's Marblyard Parking near 686 PETITES GAP RD NATURAL BRIDGE STATION VA 24579
Drop Point	DP-43	37° 35.703' N	079° 29.650' W	948	121 PINEY MOUNTAIN LN NATURAL BRIDGE STATION VA
Drop Point	DP-45	37° 36.464' N	79° 28.850' W	870	Glenwood Horse Trail Helligate Trailhead, Big Helligate Ln Natural Bridge Station VA
Drop Point	DP-50	37° 37.162' N	79° 27.501' W	916	North End of Sawmill Hollow Rd off Big Helligate Ln Natural Bridge Station VA
Helibase		37° 16.300' N	79° 20.150' W	804	New London Airport 1114 WHEELS DR NEW LONDON VA
ICP		37° 37.238' N	79° 29.914' W	850	43 NATURAL BRIDGE SCHOOL RD NATURAL BRIDGE STATION VA 24579
Water Source		37° 32.065' N	79° 21.629' W	751	
Water Source		37° 34.575' N	79° 20.276' W	788	
Repeater	Command 1 (C6)	37° 31.043' N	79° 30.665' W	4,200	76607 BLUE RIDGE PKWY, Buchanan, VA 24066
Repeater	Natural Bridge	37° 37.700' N	79° 30.745' W	906	185 RANGER LN, NATURAL BRIDGE STATION, VA 24579
Repeater	Apple Orchard	37° 31.025' N	79° 30.567' W	4,160	76607 BLUE RIDGE PKWY, Buchanan, VA 24066
Repeater	Rocky Mtn.	37° 47.740' N	79° 10.870' W	4,000	2821 WIGGINS SPRING RD, VESUVIUS, VA 24521



79°33.5'W 79°33'W 79°32.5'W 79°32'W 79°31.5'W 79°31'W 79°30.5'W 79°30'W 79°29.5'W 79°29'W 79°28.51'W 79°28'W 79°27.5'W 79°27'W 79°26.5'W 79°26'W 79°25.5'W 79°25'W 79°24.5'W 79°24'W 79°23.5'W 79°23'W 79°22.5'W 79°22'W 79°21.5'W 79°21.01'W 79°20.5'W 79°20'W 79°19.5'W

