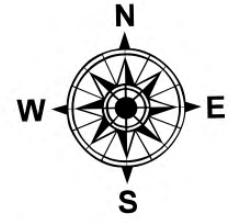
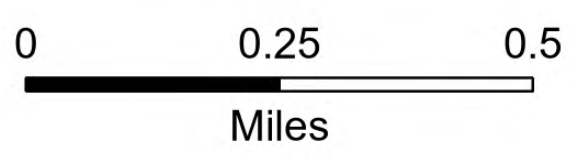


# Matts Creek Fire East Side

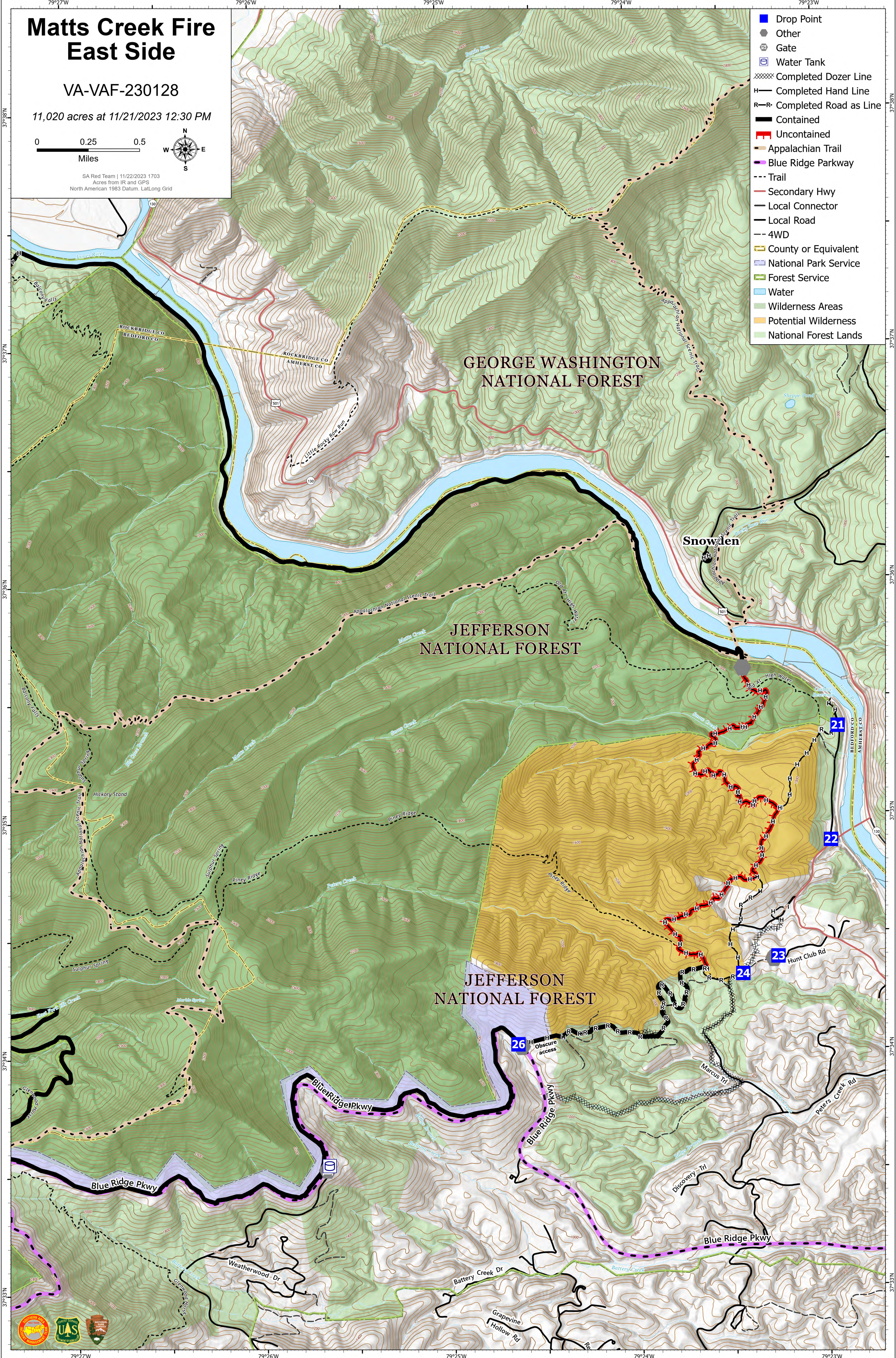
VA-VAF-230128

11,020 acres at 11/21/2023 12:30 PM



SA Red Team | 11/22/2023 1703  
Acres from IR and GPS  
North American 1983 Datum, Lat/Long Grid

- Drop Point
- Other
- Gate
- Water Tank
- Completed Dozer Line
- Completed Hand Line
- Completed Road as Line
- Contained
- Uncontained
- Appalachian Trail
- Blue Ridge Parkway
- Trail
- Secondary Hwy
- Local Connector
- Local Road
- 4WD
- County or Equivalent
- National Park Service
- Forest Service
- Water
- Wilderness Areas
- Potential Wilderness
- National Forest Lands



GEORGE WASHINGTON  
NATIONAL FOREST

JEFFERSON  
NATIONAL FOREST

JEFFERSON  
NATIONAL FOREST

Snowden

21

22

23

24

26

