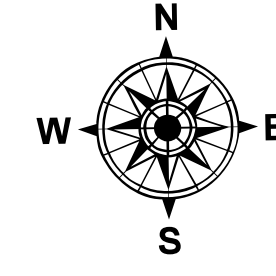
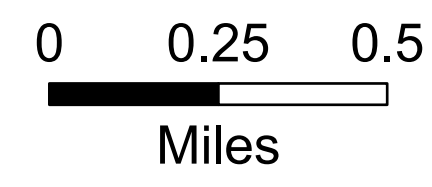


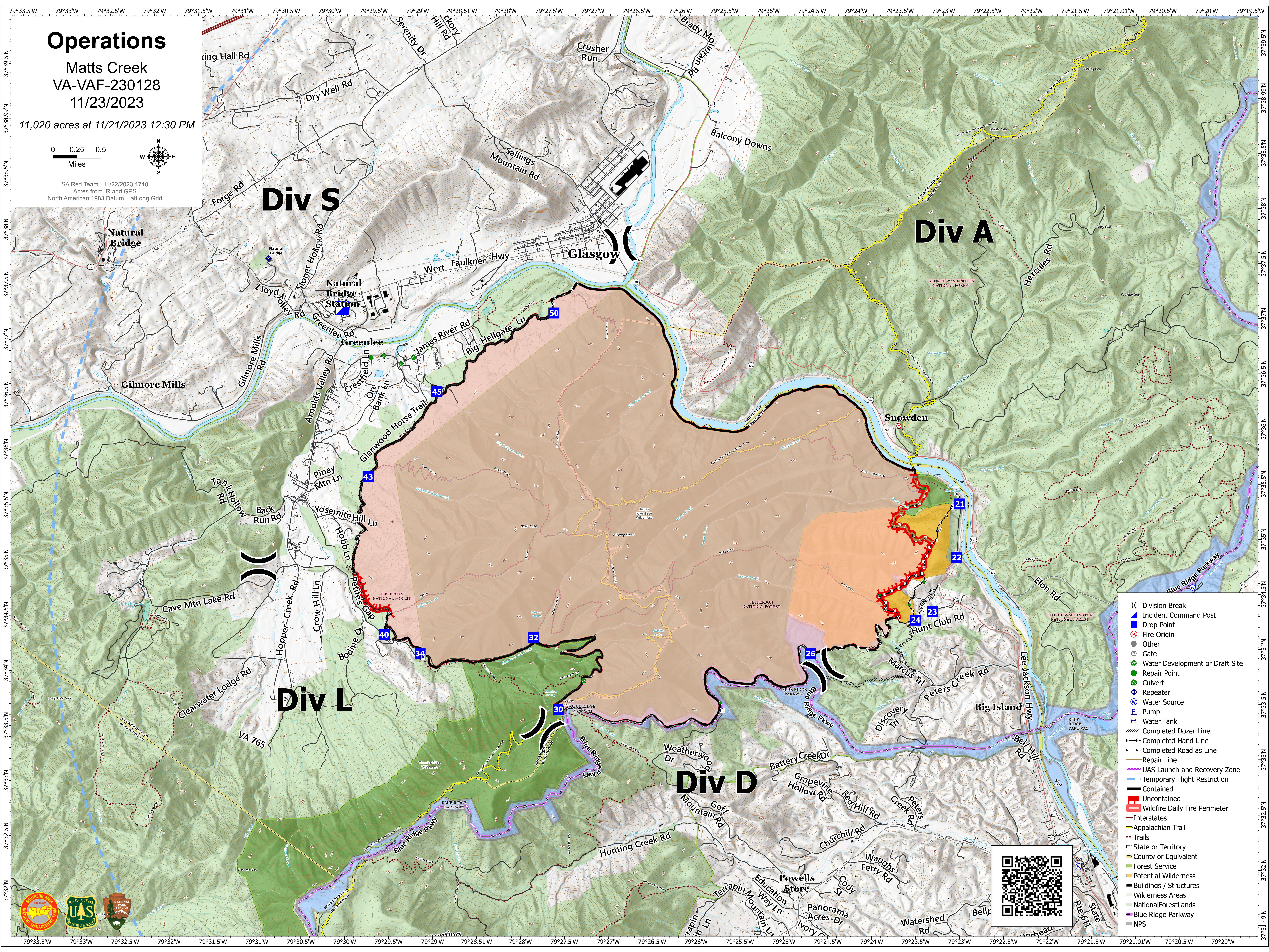
Operations

Matts Creek
VA-VAF-230128
11/23/2023

11,020 acres at 11/21/2023 12:30 PM



SA Red Team | 11/22/2023 1710
Acres from IR and GPS
North American 1983 Datum. Lat/Long Grid



- (X) Division Break
- (X) Incident Command Post
- (X) Drop Point
- (X) Fire Origin
- (X) Other
- (X) Gate
- (X) Water Development or Draft Site
- (X) Repair Point
- (X) Culvert
- (X) Repeater
- (X) Water Source
- (X) Pump
- (X) Water Tank
- (X) Completed Dozer Line
- (X) Completed Hand Line
- (X) Completed Road as Line
- (X) Repair Line
- (X) UAS Launch and Recovery Zone
- (X) Temporary Flight Restriction
- (X) Contained
- (X) Uncontained
- (X) Wildfire Daily Fire Perimeter
- (X) Interstates
- (X) Appalachian Trail
- (X) Trails
- (X) State or Territory
- (X) County or Equivalent
- (X) Forest Service
- (X) Potential Wilderness
- (X) Buildings / Structures
- (X) Wilderness Areas
- (X) National Forest/Lands
- (X) Blue Ridge Parkway
- (X) NPS

