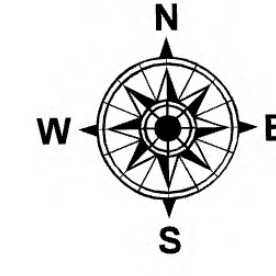


# Operations

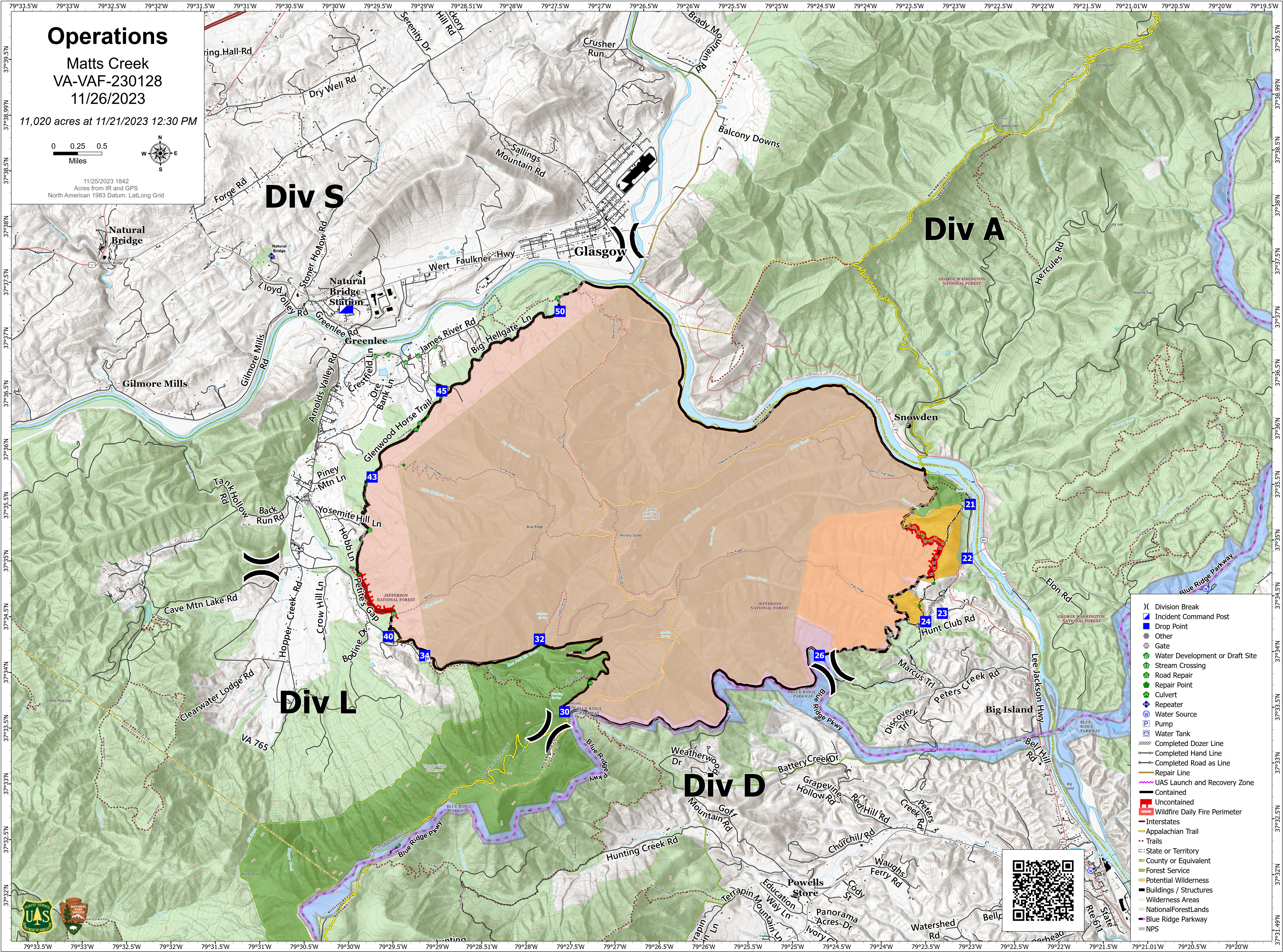
Matts Creek  
VA-VAF-230128  
11/26/2023

11,020 acres at 11/21/2023 12:30 PM

0 0.25 0.5  
Miles



11/25/2023 1842  
Acres from IR and GPS  
North American 1983 Datum, Lat/Long Grid



- (X) Division Break
- Incident Command Post
- Drop Point
- Other
- Gate
- Water Development or Draft Site
- Stream Crossing
- Road Repair
- Repair Point
- Culvert
- Repeater
- Water Source
- Pump
- Water Tank
- Completed Dozer Line
- Completed Hand Line
- Completed Road as Line
- Repair Line
- UAS Launch and Recovery Zone
- Contained
- Uncontained
- Wildfire Daily Fire Perimeter
- Interstates
- Appalachian Trail
- Trails
- State or Territory
- County or Equivalent
- Forest Service
- Potential Wilderness
- Buildings / Structures
- Wilderness Areas
- National Forest/Lands
- Blue Ridge Parkway
- NPS

