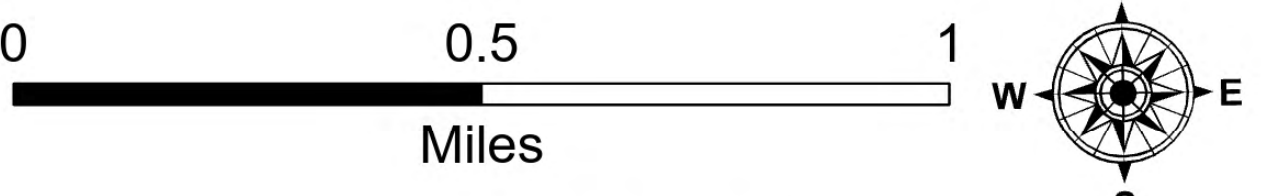


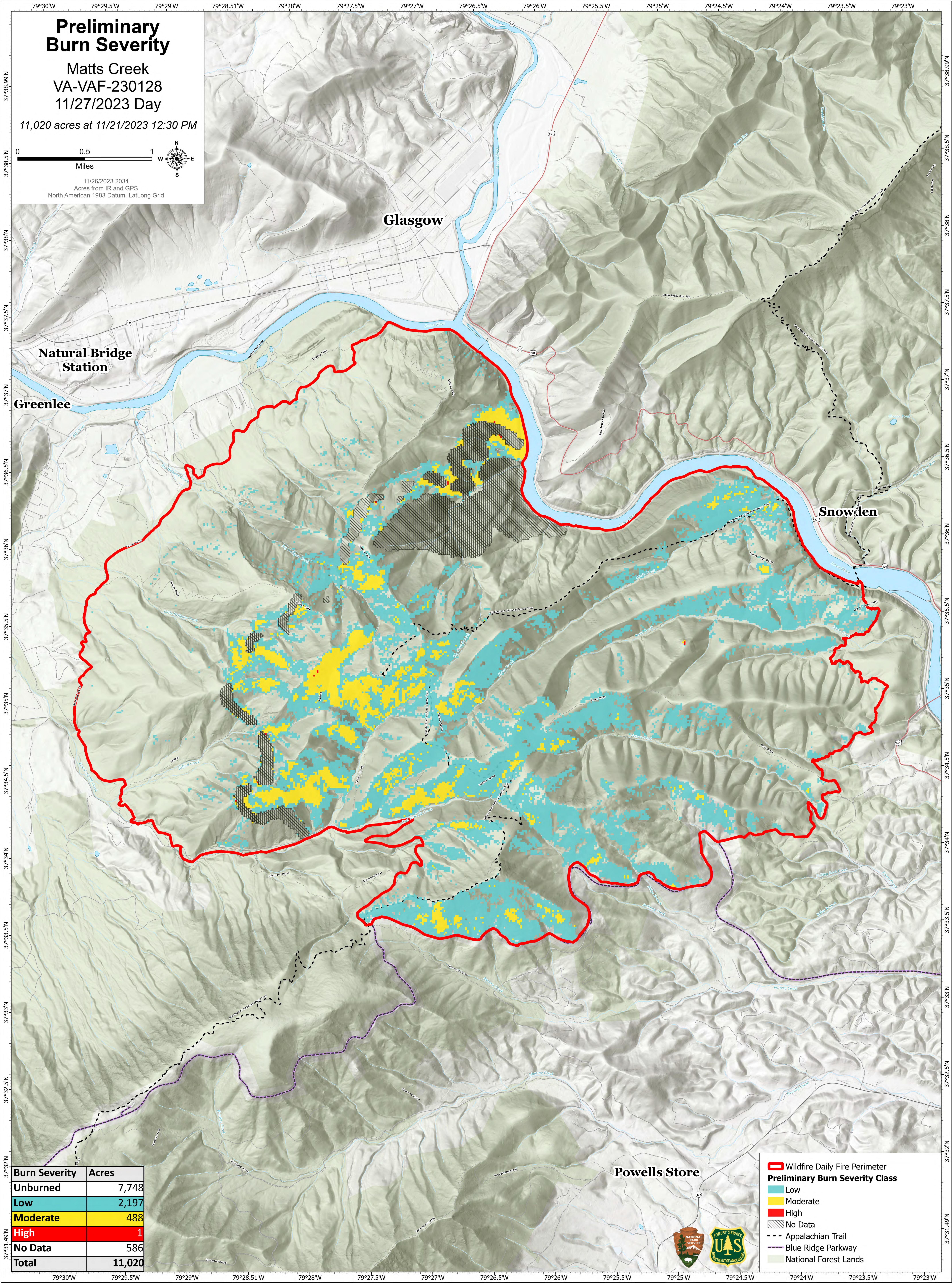
# Preliminary Burn Severity

Matts Creek  
VA-VAF-230128  
11/27/2023 Day

11,020 acres at 11/21/2023 12:30 PM



11/26/2023 2034  
Acres from IR and GPS  
North American 1983 Datum, Lat/Long Grid



Burn Severity	Acres
Unburned	7,748
Low	2,197
Moderate	488
High	1
No Data	586
<b>Total</b>	<b>11,020</b>

Powells Store



- Wildfire Daily Fire Perimeter
- Preliminary Burn Severity Class**
- Low
- Moderate
- High
- No Data
- Appalachian Trail
- Blue Ridge Parkway
- National Forest Lands