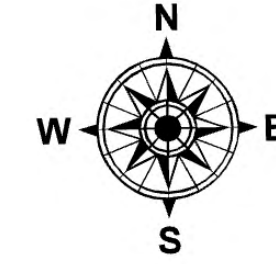


# Operations

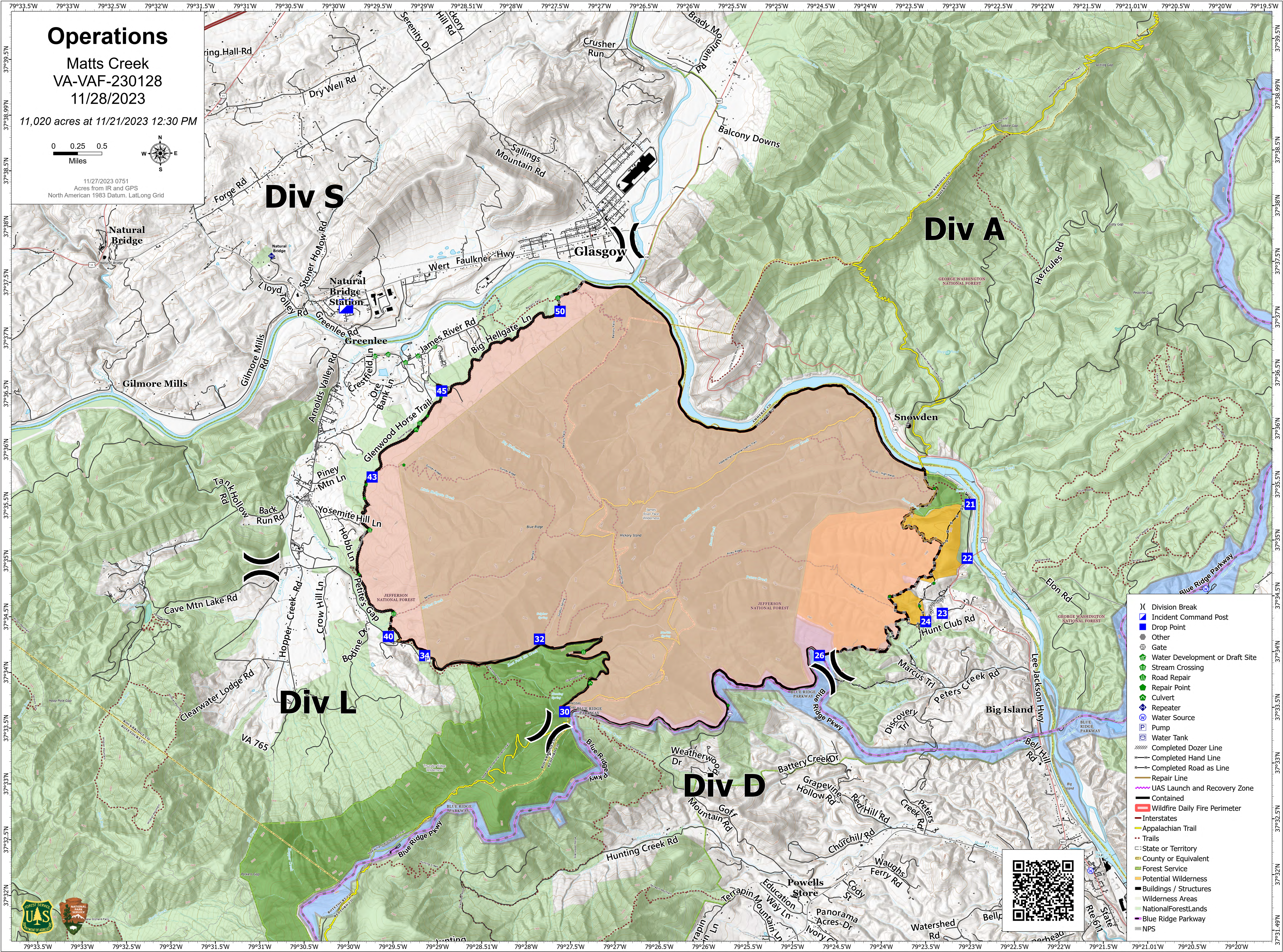
Matts Creek  
VA-VAF-230128  
11/28/2023

11,020 acres at 11/21/2023 12:30 PM

0 0.25 0.5  
Miles



11/27/2023 0751  
Acres from IR and GPS  
North American 1983 Datum, Lat/Long Grid



- ( ) Division Break
- Incident Command Post
- Drop Point
- Other
- ⊘ Gate
- ⊘ Water Development or Draft Site
- ⊘ Stream Crossing
- ⊘ Road Repair
- ⊘ Repair Point
- ⊘ Culvert
- ⊘ Repeater
- ⊘ Water Source
- ⊘ Pump
- ⊘ Water Tank
- ⊘ Completed Dozer Line
- ⊘ Completed Hand Line
- ⊘ Completed Road as Line
- ⊘ Repair Line
- ⊘ UAS Launch and Recovery Zone
- ⊘ Contained
- ⊘ Wildfire Daily Fire Perimeter
- ⊘ Interstates
- ⊘ Appalachian Trail
- ⊘ Trails
- ⊘ State or Territory
- ⊘ County or Equivalent
- ⊘ Forest Service
- ⊘ Potential Wilderness
- ⊘ Buildings / Structures
- ⊘ Wilderness Areas
- ⊘ National Forest/Lands
- ⊘ Blue Ridge Parkway
- ⊘ NPS

